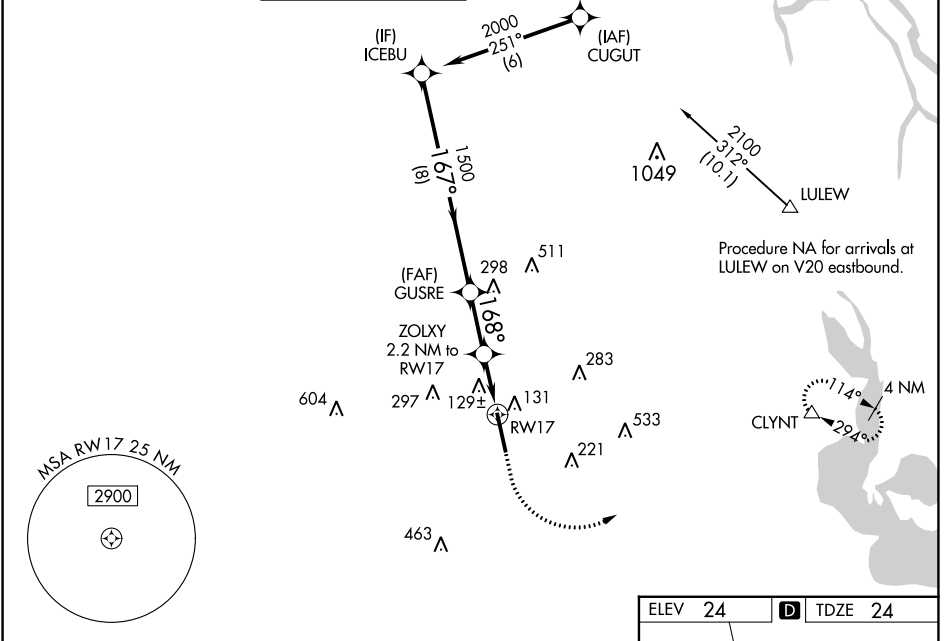


WAAS CH 82501 W17A	APP CRS 168°	Rwy Idg 8002 TDZE 24 Apt Elev 24
--	------------------------	---

RNAV (GPS) RWY 17

ACADIANA RGNL (A.R.A.)

RNP APCH.					ODALS		MISSED APPROACH: Climb to 480 then climbing left turn to 2000 direct CLYNT and hold.	
<p>▼ Circling NA to Rwy 17W and 35W. Inop table does not apply to LPV. For inop ALS, increase LNAV/VNAV all Cats visibility to 1½ SM and LNAV Cats C/D visibility to 1 SM. For uncompensated Baro-VNAV systems, LNAV/VNAV NA below -3°C or above 54°C.</p>								
ASOS 133.325	LAFAYETTE APP CON* 121.1 268.7	ACADIANA TOWER* 125.0 (CTAF) 239.3	GND CON 121.7	CLNC DEL 121.7	CLNC DEL 118.05 (when twr closed)	UNICOM 122.95	0* 122.7	



SC-4, 11 JUL 2024 to 08 AUG 2024

SC-4, 11 JUL 2024 to 08 AUG 2024

VGSi and RNAV glidepath not coincident (VGSi Angle 3.00/TCH 51).					480	2000	CLYNT
					*LNAV only.		
GP 3.00° TCH 51							
CATEGORY	A	B	C	D			
LPV DA		274-¾	250 (300-¾)				
LNAV/VNAV DA		420-1½	396 (400-1½)				
LNAV MDA	380-¾	356 (400-¾)	380-⅞	356 (400-⅞)			
CIRCLING	440-1 416 (500-1)	480-1 456 (500-1)	600-1½ 576 (600-1½)	680-2 656 (700-2)			

