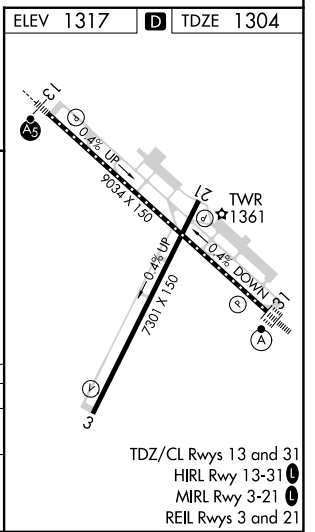
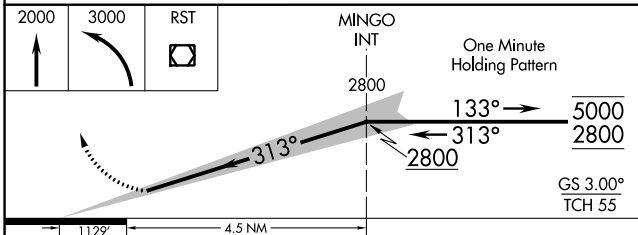
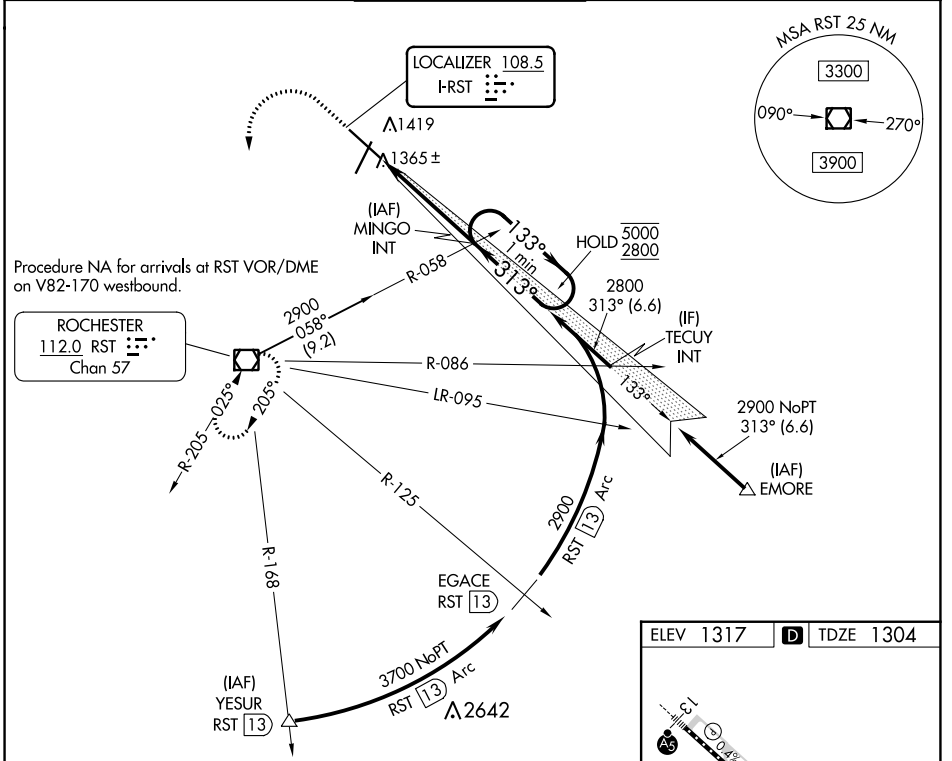


LOC I-RST 108.5	APP CRS 313°	Rwy Idg 9033
		TDZE 1304
		Apt Elev 1317

ILS Z RWY 31 (SA CAT I)

ROCHESTER INTL (RST)

DME required for procedure entry at YESUR.		ALSIF-2	MISSED APPROACH: Climb to 2000 then climbing left turn to 3000 direct RST VOR/DME and hold.	
ASR	Requires specific OPSPEC, MSPEC, or LOA approval and use of HUD to DH. Procedure NA when tower closed.			
ATIS 120.5	ROCHESTER APP CON* 119.8 251.125	ROCHESTER TOWER* 118.3 (CTAF) 257.8	GND CON 121.9	UNICOM 122.95



CATEGORY	A	B	C	D
S-ILS 31	RA 204/14 150 DA 1454			

SA CATEGORY I ILS - SPECIAL AIRCREW & AIRCRAFT CERTIFICATION REQUIRED

NC-1, 11 JUL 2024 to 08 AUG 2024

NC-1, 11 JUL 2024 to 08 AUG 2024