


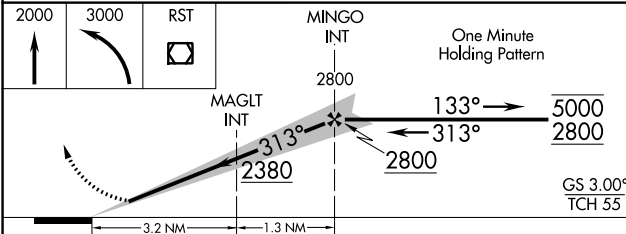
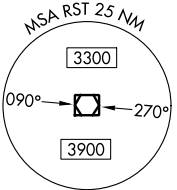
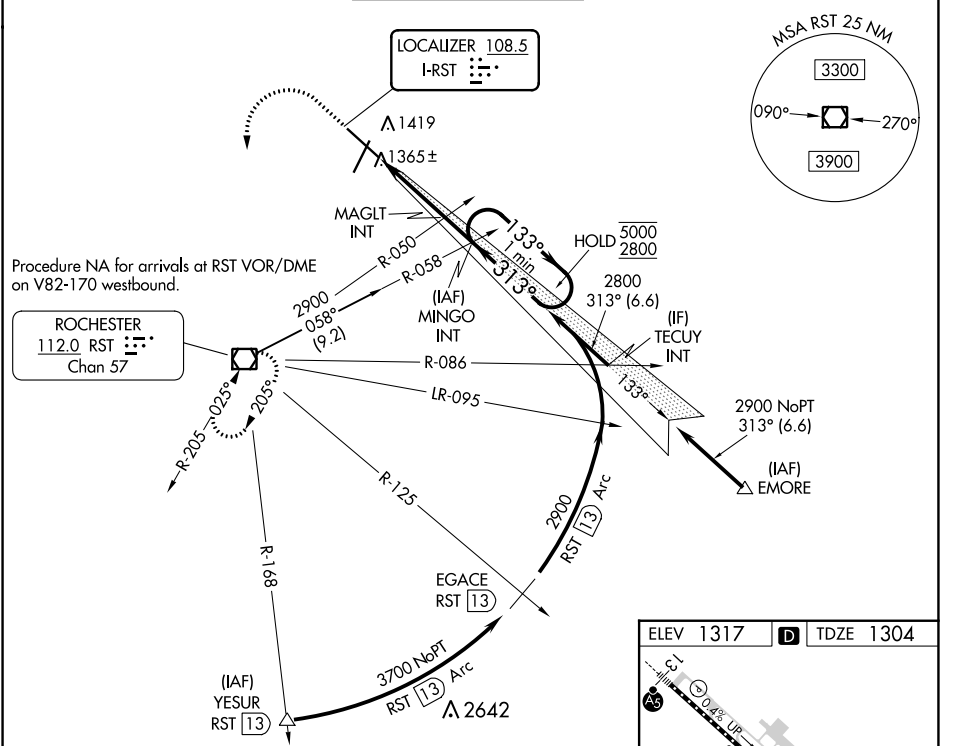
LOC I-RST 108.5	APP CRS 313°	Rwy Idg 9033
		TDZE 1304
		Apt Elev 1317

ILS Z or LOC Z RWY 31

ROCHESTER INTL (RST)

DME required for procedure entry at YESUR.		ALSF-2	MISSED APPROACH: Climb to 2000 then climbing left turn to 3000 direct RST VOR/DME and hold.
ASR	For inop ALS, increase S-LOC 31 Cat C/D visibility to RVR 4500.	(A) 	

ATIS 120.5	ROCHESTER APP CON* 119.8 251.125	ROCHESTER TOWER* 118.3 (CTAF) 257.8	GND CON 121.9	UNICOM 122.95
----------------------	--------------------------------------------	-----------------------------------------------	-------------------------	-------------------------



ELEV 1317	D	TDZE 1304
-----------	---	-----------

ASR
0.4% UP
0.2% UP
0.2% DOWN
0.4% DOWN
7200 X 150
9032 X 150
7200
313°

3
TDZ/CL Rws 13 and 31
HIRL Rwy 13-31
MRL Rwy 3-21
REIL Rws 3 and 21

FAF to MAP 4.5 NM					
Knots	60	90	120	150	180
Min:Sec	4:30	3:00	2:15	1:48	1:30

CATEGORY	A	B	C	D
S-ILS 31	1504/18		200 (200-½)	
S-LOC 31	1620/24		316 (400-½)	
CIRCLING	1720-1	1780-1	1900-1½	1900-2
	403 (500-1)	463 (500-1)	583 (600-½)	583 (600-2)

NC-1, 11 JUL 2024 to 08 AUG 2024

NC-1, 11 JUL 2024 to 08 AUG 2024