

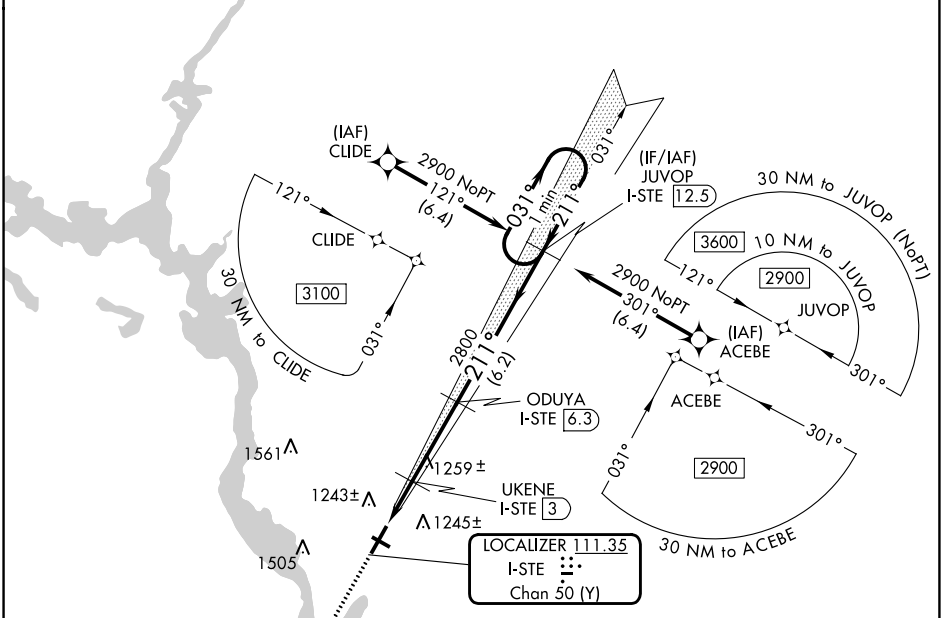
LOC/DME I-STE	APP CRS	Rwy Idg	6028
111.35	211°	TDZE	1110
Chan 50(Y)		Apt Elev	1110

ILS or LOC RWY 21

STEVENS POINT MUNI (STE)

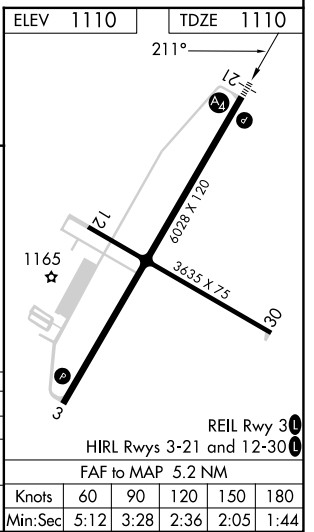
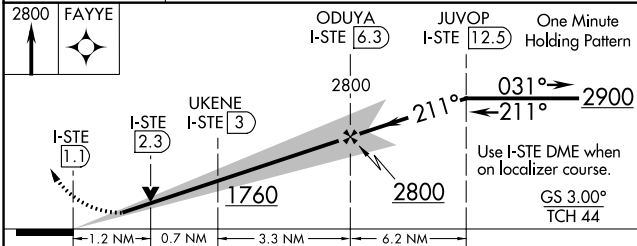
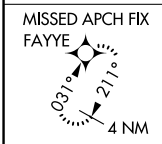
RNP APCH - GPS.	MALS	MISSED APPROACH: Climb to 2800 direct FAYYE and hold.
DME required.		
For inop ALS, increase S-LOC 21 Cat C/D visibility to 1 1/2 SM. Inop table does not apply to S-ILS 21 all Cats. Autopilot coupled approach NA below 1400.		

AWOS-3 119.275	MINNEAPOLIS CENTER 124.4 317.7	UNICOM 122.7 (CTAF)
--------------------------	--	-------------------------------



EC-3, 11 JUL 2024 to 08 AUG 2024

EC-3, 11 JUL 2024 to 08 AUG 2024



CATEGORY	A	B	C	D
S-ILS 21		1360-3/4	250 (300-3/4)	
S-LOC 21	1520-3/4	410 (500-3/4)	1520-1	410 (500-1)
CIRCLING	1580-1 470 (500-1)	1600-1 490 (500-1)	1860-2 1/4 750 (800-2 1/4)	1860-2 1/2 750 (800-2 1/2)

Knots	60	90	120	150	180
Min:Sec	5:12	3:28	2:36	2:05	1:44