

(METRO3.DXO) 23334
METRO THREE DEPARTURE

AL-5052 (FAA)

OAKLAND COUNTY INTL (PTK)
PONTIAC, MICHIGAN

**TOP ALTITUDE:
3000**

EC-1, 11 JUL 2024 to 08 AUG 2024

TAKEOFF MINIMUMS

Rwy 18, 36: NA - Environmental.
Rwys 9L/R, 27L/R: Standard.

ATIS 125.025
CLNC DEL 118.25
GND CON 121.9
PONTIAC TOWER ★
120.5 (CTAF)
DETROIT DEP CON
132.35 284.0

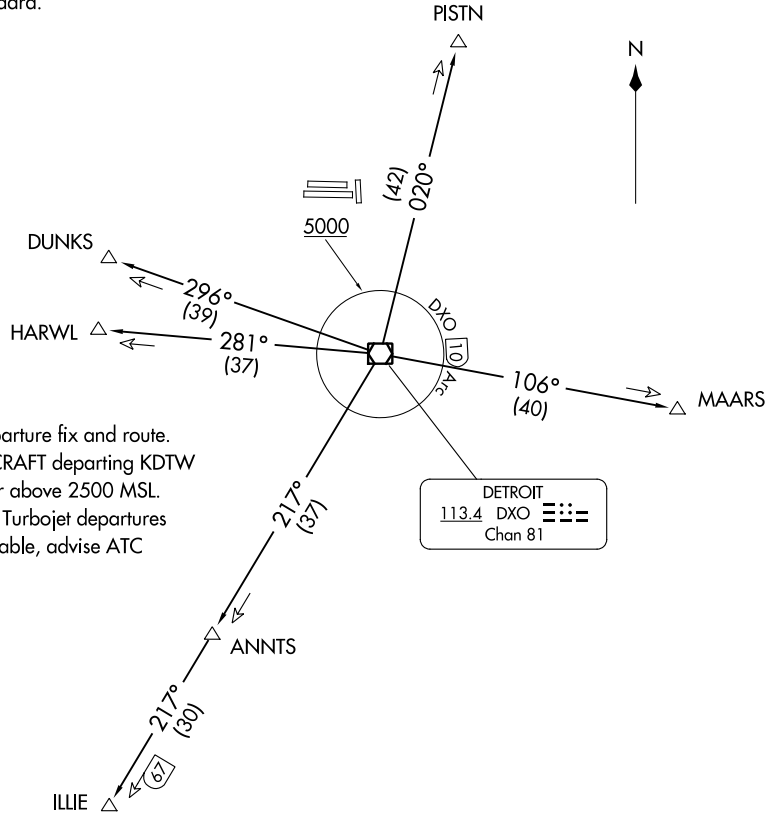
NOTE: RADAR required.
NOTE: DME required.
NOTE: For use by non-RNAV equipped
aircraft only.

SPECIAL INSTRUCTIONS:

When using this departure, file the appropriate depicted departure fix and route.
Aircraft over HARWL must file FL220 and below. PROP AIRCRAFT departing KDTW
Rwy 21L/R and 22L/R westbound, cross DXO 3.5 DME at or above 2500 MSL.
Aircraft landing Cleveland (CLE) must file MAARS transition. Turbojet departures
at/above 10000, maintain 280K until advised by ATC. If unable, advise ATC
prior to departure.

(NARRATIVE ON FOLLOWING PAGE)

NOTE: Chart not to scale.



METRO THREE DEPARTURE
(METRO3.DXO) 05NOV20

PONTIAC, MICHIGAN
OAKLAND COUNTY INTL (PTK)

EC-1, 11 JUL 2024 to 08 AUG 2024



DEPARTURE ROUTE DESCRIPTION

TAKEOFF RUNWAYS 9L/R and 27L/R: Climb on assigned heading, thence....

.....maintain ATC assigned altitude for RADAR vectors to intercept filed/assigned transition or enroute fix/navaid. When ATC assigned altitude is at or above 5000, cross DXO 10 DME Arc at or above 5000 for noise abatement. If unable to comply, advise ATC prior to departure. Expect clearance to filed altitude/flight level within ten (10) minutes after departure.

DUNKS TRANSITION (METRO3.DUNKS): From over DXO VOR/DME on DXO R-296 to DUNKS.

HARWL TRANSITION (METRO3.HARWL): From over DXO VOR/DME on DXO R-281 to HARWL.

ILLIE TRANSITION (METRO3.ILLIE): From over DXO VOR/DME on DXO R-217 to ILLIE.

MAARS TRANSITION (METRO3.MAARS): From over DXO VOR/DME on DXO R-106 to MAARS.

PISTN TRANSITION (METRO3.PISTN): From over DXO VOR/DME on DXO R-020 to PISTN.

EC-1, 11 JUL 2024 to 08 AUG 2024

EC-1, 11 JUL 2024 to 08 AUG 2024