

LOC/DME I-VSF <b>111.3</b> Chan <b>50</b>	APP CRS <b>051°</b>	Rwy ldg TDZE Apt Elev	<b>5501</b> <b>575</b> <b>578</b>
---	------------------------	-----------------------------	---

# LOC RWY 5

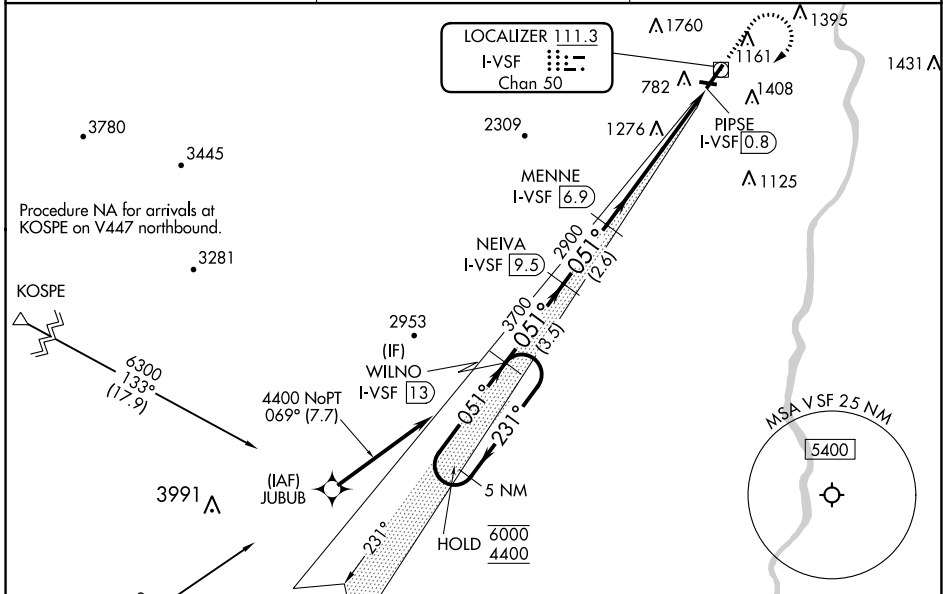
HARTNESS STATE (SPRINGFIELD) (V5F)

DME required.  
RNAV 1-GPS required.

**NA**  
Rwy 5 helicopter visibility reduction below 3/4 SM NA.  
Circling to Rwy 11, 23, 29 NA at night.

MISSED APPROACH: Climb to 2000 then climbing right turn to 4400 direct WILNO/13 DME and hold.

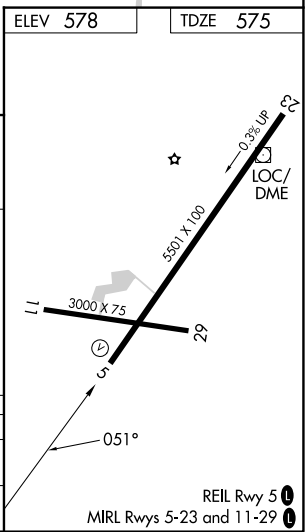
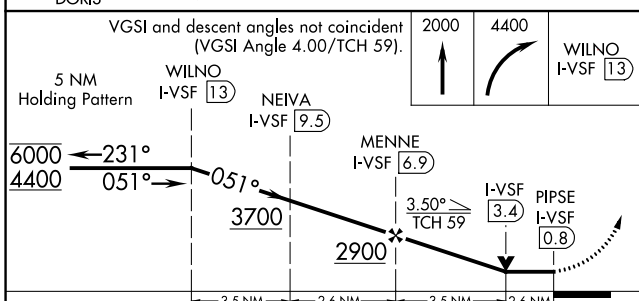
ASOS <b>121.425</b>	BOSTON CENTER <b>134.7 269.475</b>	UNICOM <b>122.8</b> (CTAF)
------------------------	---------------------------------------	-------------------------------



ELEV 578 | TDZE 575

Procedure NA for arrivals at KOSPE on V447 northbound.

Procedure NA for arrivals at DORIS on V490 westbound.



CATEGORY	A	B	C	D
S-5	1760-1 1/4 1185 (1200-1 1/4)	1760-1 1/2 1185 (1200-1 1/2)	1760-3	1185 (1200-3)
CIRCLING	1760-1 1/4 1182 (1200-1 1/4)	1760-1 1/2 1182 (1200-1 1/2)	2600-3	2022 (2100-3)

NE-1, 11 JUL 2024 to 08 AUG 2024

NE-1, 11 JUL 2024 to 08 AUG 2024

REIL Rwy 5  
MIRL Rws 5-23 and 11-29