

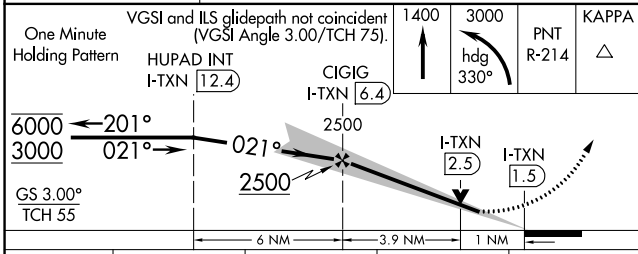
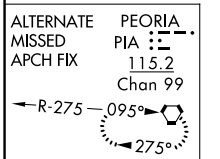
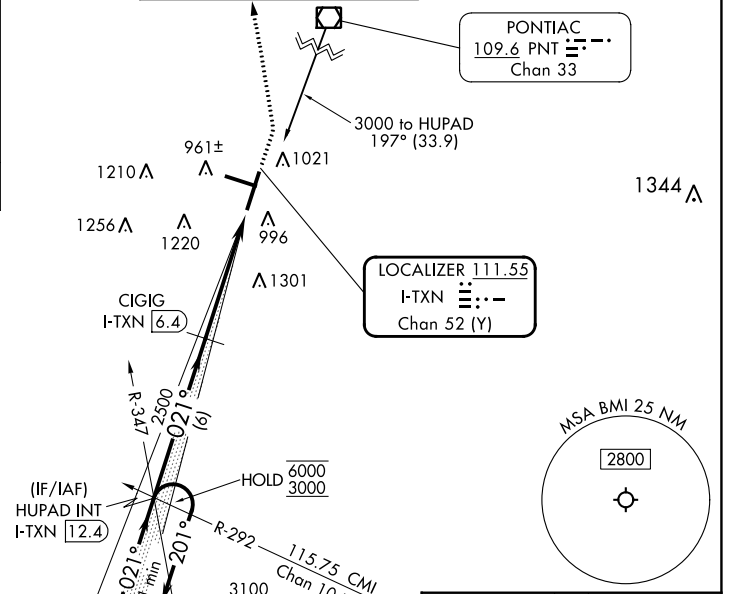
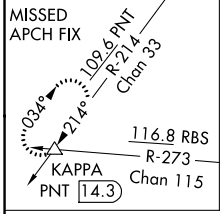
LOC/DME I-TXN 111.55 Chan 52 (Y)	APP CRS 021°	Rwy Idg 8000 TDZE 867 Apt Elev 871
--	------------------------	---

ILS or LOC RWY 2

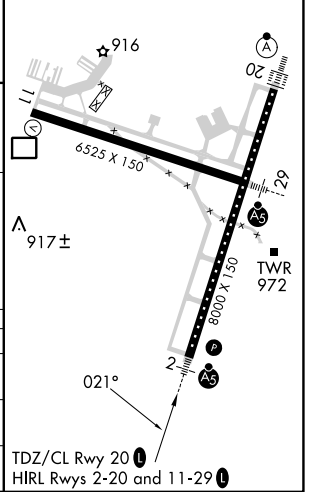
CENTRAL IL RGNL/BLOOMINGTON-NORMAL (BMI)

DME required for LOC only.		MALS R	MISSED APPROACH: Climb to 3000 on heading 330° and on PNT VOR/DME R-214 to KAPPA INT/PNT 14.3 DME and hold.
<p>Autopilot coupled approach NA below 1100. Inop table does not apply to S-ILS 2. For inop ALS, increase S-LOC 2 Cat A/B visibility to RVR 5500 and Cat C/D visibility to RVR 6000.</p>			

ATIS 119.575	SAINT LOUIS APP CON 128.725 256.9	BLOOMINGTON TOWER ★ 124.6 (CTAF) 0 269.575	GND CON 121.65	UNICOM 122.95
------------------------	---	--	--------------------------	-------------------------



ELEV 871	TDZE 867
----------	----------



CATEGORY	A	B	C	D
S-ILS 2		1067/40	200 (200-¾)	
S-LOC 2		1260/40	393 (400-¾)	
CIRCLING	1340-1	469 (500-1)	1620-2¼ 749 (800-2¼)	1620-2½ 749 (800-2½)

TDZ/CL Rwy 20
HIRL Rwy 2-20 and 11-29

ILS or LOC RWY 2

EC-3, 11 JUL 2024 to 08 AUG 2024

EC-3, 11 JUL 2024 to 08 AUG 2024