


VOR/DME MKL 114.85 Chan 95 (Y)	APP CRS 028°	Rwy Idg 6005 TDZE 433 Apt Elev 433
---	------------------------	---

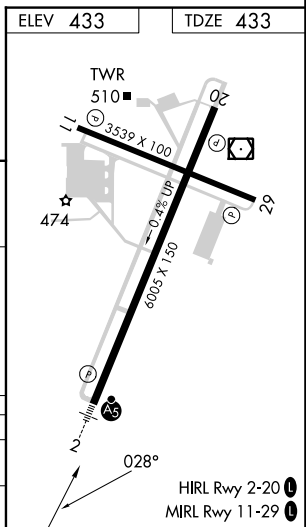
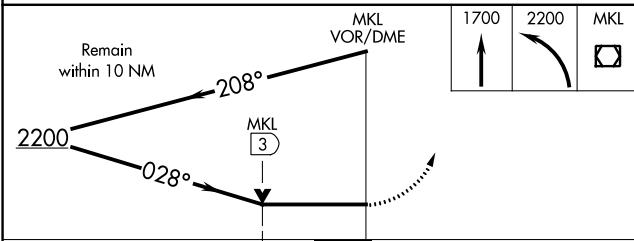
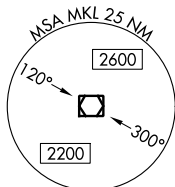
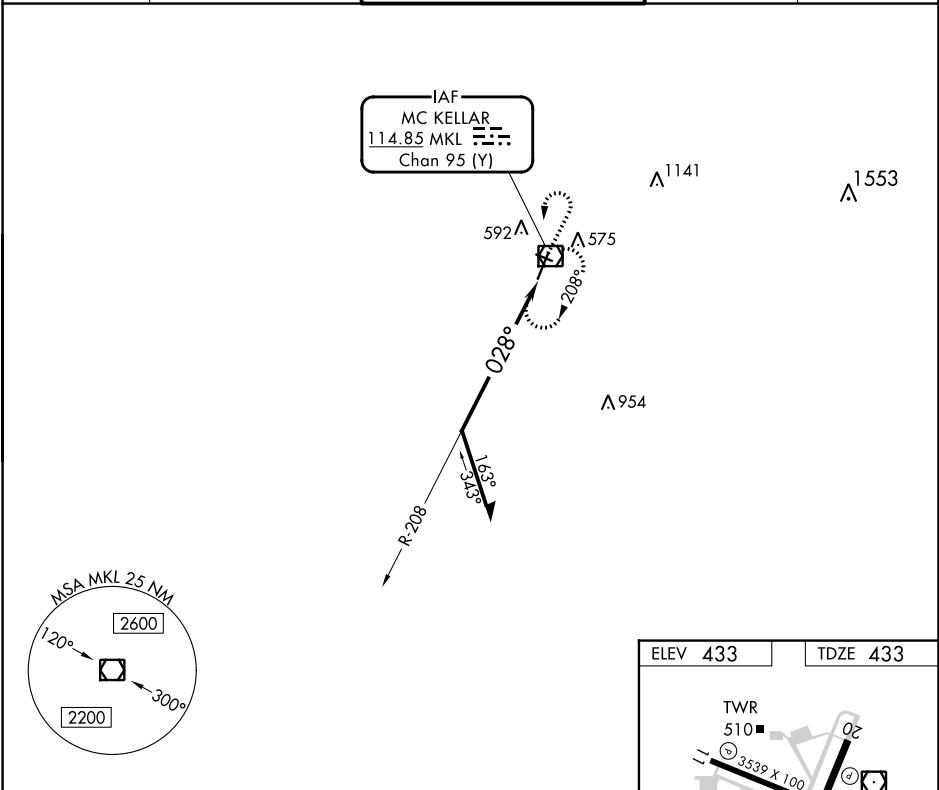
VOR RWY 2

MC KELLAR-SIPES RGNL (MKL)

⚠ Rwy 2 helicopter visibility reduction below 3/4 SM NA. For inop ALS, increase S-2 Cat A/B visibility to 1 SM.

MALS

MISSED APPROACH: Climb to 1700 then climbing left turn to 2200 direct MKL VOR/DME and hold, continue climb-in-hold to 2200.

ASOS 119.325	MEMPHIS CENTER 134.65 316.15	JACKSON TOWER ★ 127.15 (CTAF) 249.95	GND CON 120.9	UNICOM 122.95
------------------------	--	--	-------------------------	-------------------------



CATEGORY	A	B	C	D
S-2	1120-3/4 687 (700-3/4)		1120-1 1/2 687 (700-1 1/2)	
C CIRCLING	1120-1 687 (700-1)		1120-2 687 (700-2)	1120-2 1/4 687 (700-2 1/4)

SE-1, 11 JUL 2024 to 08 AUG 2024

SE-1, 11 JUL 2024 to 08 AUG 2024