

HI-TACAN X RWY 32L

TACAN NLC Chan 80	APCH CRS 322°	Rwy Idg TDZE Arprt Elev 13,501 227 228
-----------------------------	-------------------------	--

AL-5067 [USN]

LEMOORE NAS (REEVES FIELD) (KNLC)

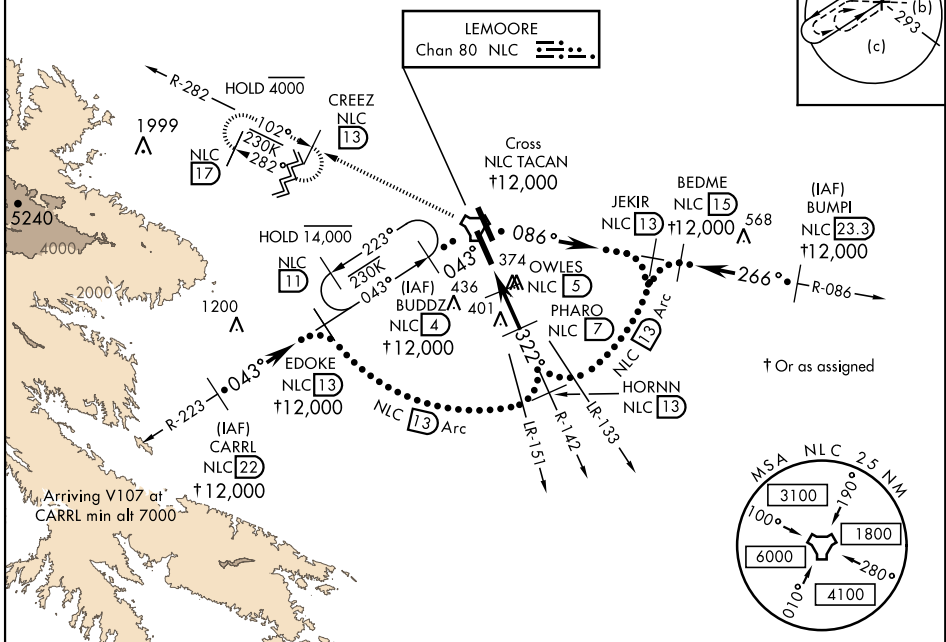
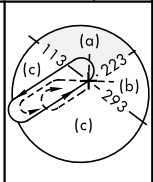
▲ * When ALS inop, increase CAT CDE vis to 1 mile.



MISSED APPROACH: Climb to 3000 via R-142 to NLC TACAN, then via R-282 to CREEZ and hold.

ATIS★ 121.575 327.15	APP CON 124.1 269.025 (N) 118.15 269.025 (S)	TOWER★ 128.3 340.2	GND CON 121.65 305.2	CLNC DEL 124.1 371.9	ASR/ PAR
--------------------------------	--	------------------------------	--------------------------------	--------------------------------	-------------

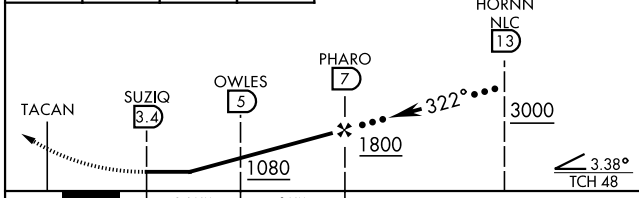
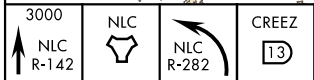
Simultaneous approach authorized.



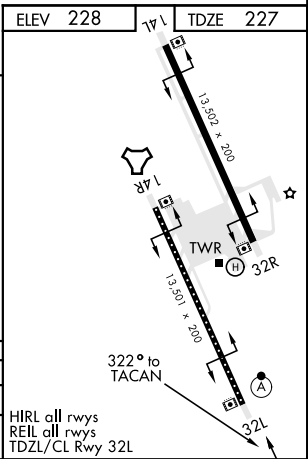
SW-2, 11 JUL 2024 to 08 AUG 2024

SW-2, 11 JUL 2024 to 08 AUG 2024

EMERG SAFE ALT 100 NM 16,500



CATEGORY	C	D	E
S-32L *	580-5/8	353 (400-5/8)	
CIRCLING	700-1 1/2 472 (500-1 1/2)	780-2 552 (600-2)	



HI-TACAN X RWY 32L