

# RNAV (GPS) RWY 32R

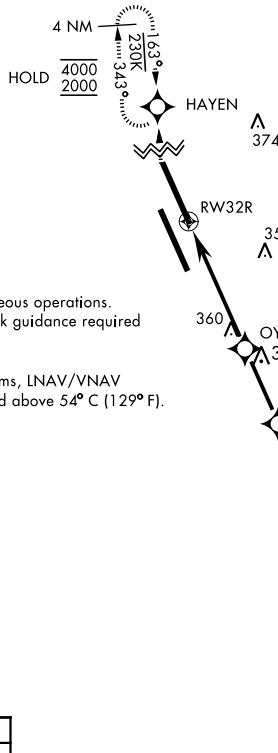
WAAS Chan <b>60335</b> <b>W32B</b>	APCH CRS <b>322°</b>	Rwy ldg <b>13,502</b> TDZE <b>221</b> Arpt Elev <b>228</b>
--	-------------------------	--

AL-5067 [USN]

LEMOORE NAS (REEVES FIELD) (KNLC)

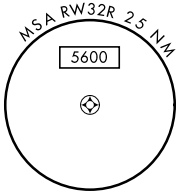
<b>V</b> DME/DME RNP-0.3 NA	MISSED APPROACH: Climb to 1200, then climbing right turn to 2000 direct HAYEN and hold.				
-----------------------------	---	--	--	--	--

ATIS ★ <b>121.575 327.15</b>	APP CON <b>124.1 269.025 (N)</b> <b>118.15 269.025 (S)</b>	TOWER ★ <b>128.3 360.2</b>	GND CON <b>121.65 305.2</b>	CLNC DEL <b>124.1 371.9</b>	ASR/PAR
---------------------------------	--	-------------------------------	--------------------------------	--------------------------------	---------



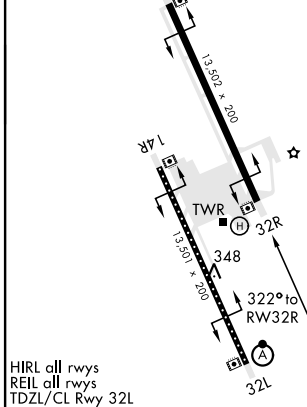
Simultaneous approaches authorized.  
LNAV procedure NA during Simultaneous operations.  
Use of FD or AP providing RNAV track guidance required during simultaneous operations.

For uncompensated Baro-VNAV systems, LNAV/VNAV procedure NA below -15°C (5° F) and above 54° C (129° F).

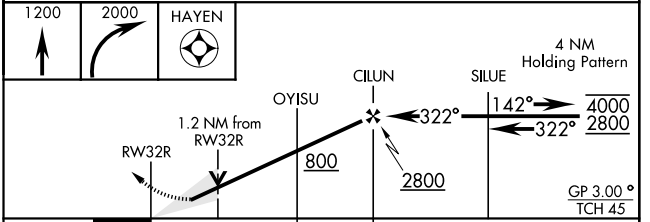


EMER SAFE ALT 100 NM 16,500

ELEV 228	TDZE 221
----------	----------



HIRL all rwy's  
REIL all rwy's  
TDZL/CL Rwy 32L



CATEGORY	A	B	C	D
LPV DA	421- $\frac{3}{4}$	200	(200- $\frac{3}{4}$ )	
LNAV/VNAV DA	511- $\frac{7}{8}$ 290 (300- $\frac{7}{8}$ )	522- $\frac{7}{8}$ 301 (300- $\frac{7}{8}$ )	532- $\frac{7}{8}$ 309 (400- $\frac{7}{8}$ )	541- $\frac{7}{8}$ 320 (400- $\frac{7}{8}$ )
LNAV MDA	660-1	439 (500-1)	660-1 $\frac{1}{4}$ 439 (500-1 $\frac{1}{4}$ )	780-2
<b>C</b> CIRCLING	680-1	452 (500-1)	700-1 $\frac{1}{2}$ 472 (500-1 $\frac{1}{2}$ )	780-2 552 (600-2)

# RNAV (GPS) RWY 32R

SW-2, 11 JUL 2024 to 08 AUG 2024

SW-2, 11 JUL 2024 to 08 AUG 2024