

RNAV (GPS) RWY 27

| | | |
|----------|-----------|------|
| APCH CRS | Rwy Idg | 4121 |
| 273° | TDZE | 242 |
| | Arpt Elev | 243 |

[USA]

SIMMONS AAF (KFBG)

RNP APCH - GPS
 ▼ When local altimeter setting not received, use Pope AAF altimeter setting.

MISSED APPROACH: Climbing left turn to 2100 direct AXILE and hold.

ATIS
139.25

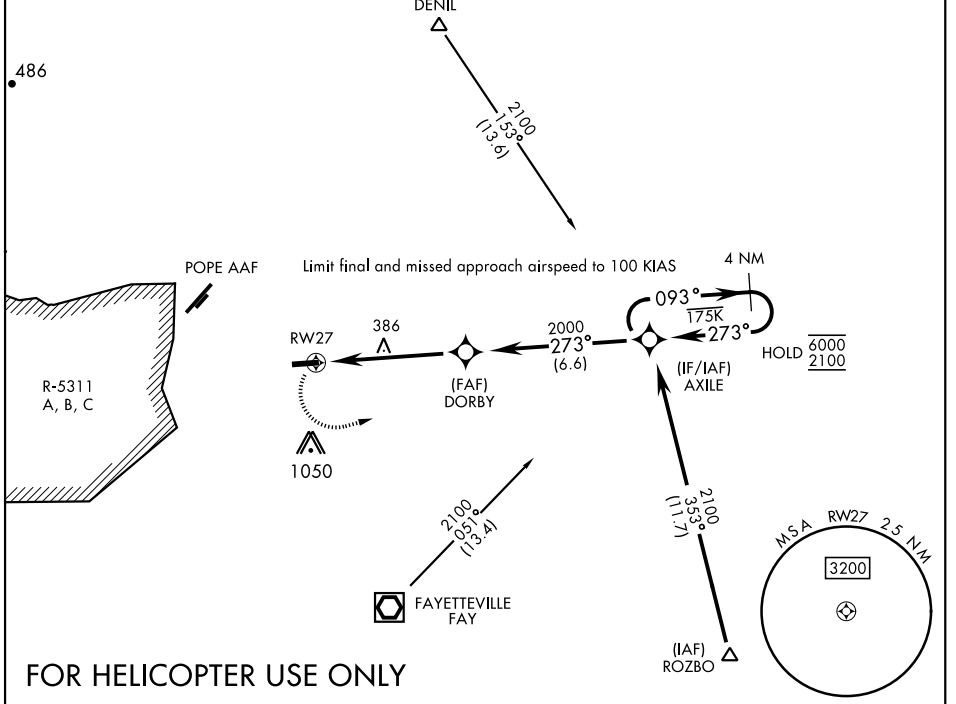
FAYETTEVILLE APP CON
133.0 290.25

TOWER ★
125.9 240.625

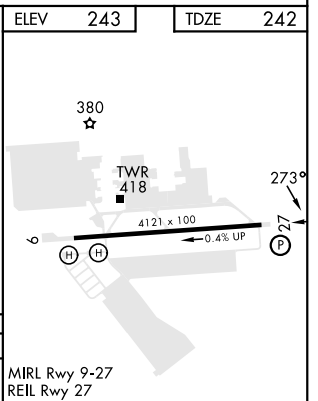
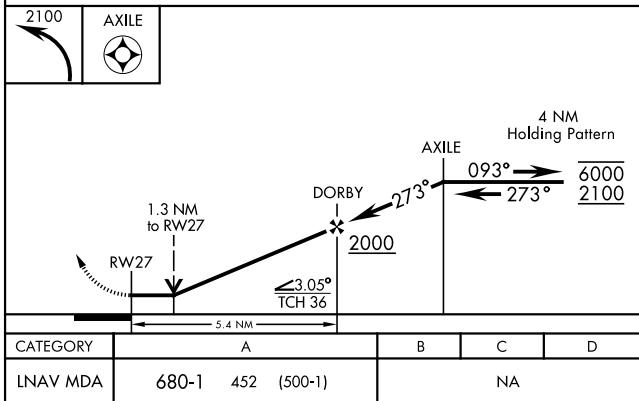
GND CON
121.9 229.4

Rwy 27 helicopter visibility reduction below 3/4 mile not authorized.

| | | | | | | |
|---|-----|-----|------|------|------|------|
| Knots | 60 | 120 | 180 | 240 | 300 | 360 |
| V/V(fpm) | 400 | 800 | 1200 | 1600 | 2000 | 2400 |
| Min climb of 400 ft/NM to 2000 - Controlling Obstacle 1050' | | | | | | |



FOR HELICOPTER USE ONLY



| | | | | |
|----------|-------------------|----|---|---|
| CATEGORY | A | B | C | D |
| LNAV MDA | 680-1 452 (500-1) | NA | | |

ELEV 243 TDZE 242

RNAV (GPS) RWY 27

SE-2, 11 JUL 2024 to 08 AUG 2024

SE-2, 11 JUL 2024 to 08 AUG 2024