

FORT LIBERTY, NORTH CAROLINA

# RNAV (GPS) RWY 9

APCH CRS	Rwy Idg	4121
093°	TDZE	242
	Arprt Elev	243

[USA]

SIMMONS AAF (KFBG)

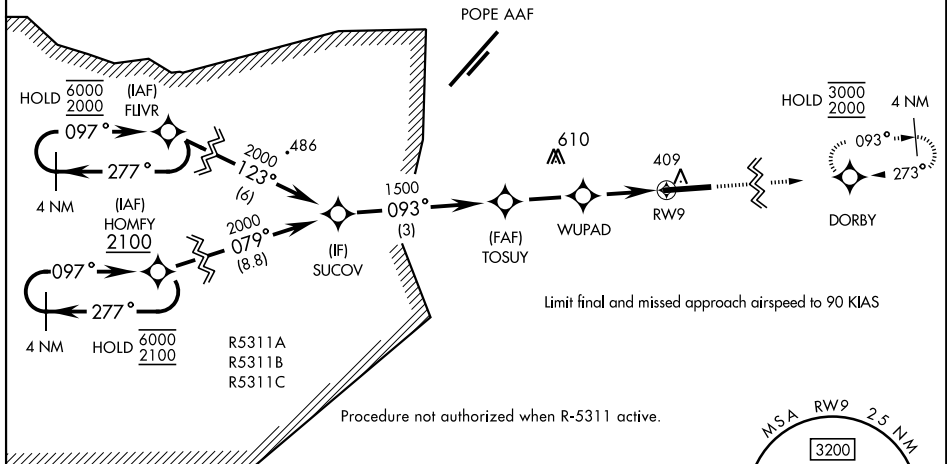
RNP APCH - GPS  
 RADAR required  
 ▼ When local altimeter setting not received, use Pope AAF altimeter setting.

MISSED APPROACH: Climb to 2000 direct DORBY and hold.

ATIS <b>139.25</b>	FAYETTEVILLE APP CON <b>133.0 290.25</b>	TOWER ★ <b>125.9 240.625</b>	GND CON <b>121.9 229.4</b>
-----------------------	---	---------------------------------	-------------------------------

Procedure not authorized at night.  
 Rwy 9 helicopter visibility reduction below 1 mile not authorized.

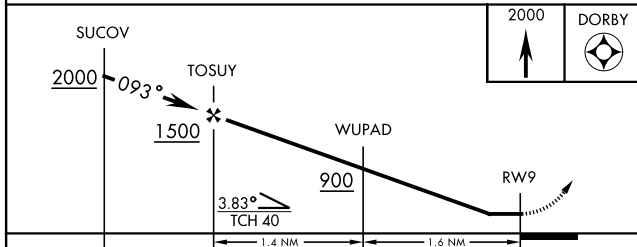
Knots	60	120	180	240	300	360
V/V(fpm)	400	800	1200	1600	2000	2400
Min climb of 400 ft/NM to 2000 - Controlling Obstacle Unk						



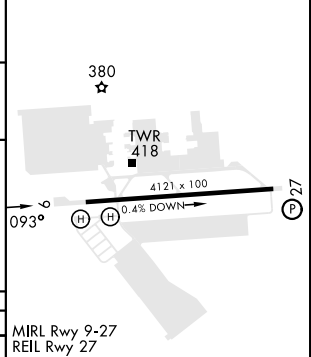
SE-2, 11 JUL 2024 to 08 AUG 2024

SE-2, 11 JUL 2024 to 08 AUG 2024

## FOR HELICOPTER USE ONLY



ELEV	243	TDZE	242
------	-----	------	-----



CATEGORY	A			B	C	D
LNNAV MDA	680-1	439	(500-1)	NA		

MIRL Rwy 9-27  
 REL Rwy 27

FORT LIBERTY, NORTH CAROLINA  
 Amdt 1 05OCT23

35°08'N-78°56'W

SIMMONS AAF (KFBG)

# RNAV (GPS) RWY 9