

VOR/DME SBJ <b>112.9</b> Chan <b>76</b>	APP CRS <b>016°</b>	Rwy Idg <b>5054</b> TDZE <b>190</b> Apt Elev <b>190</b>
---	------------------------	---

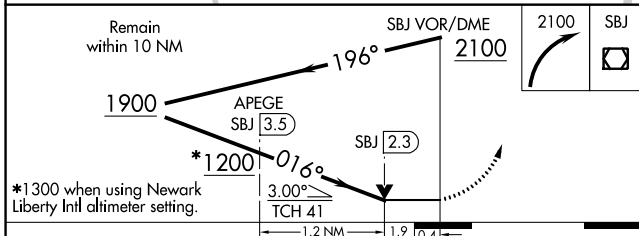
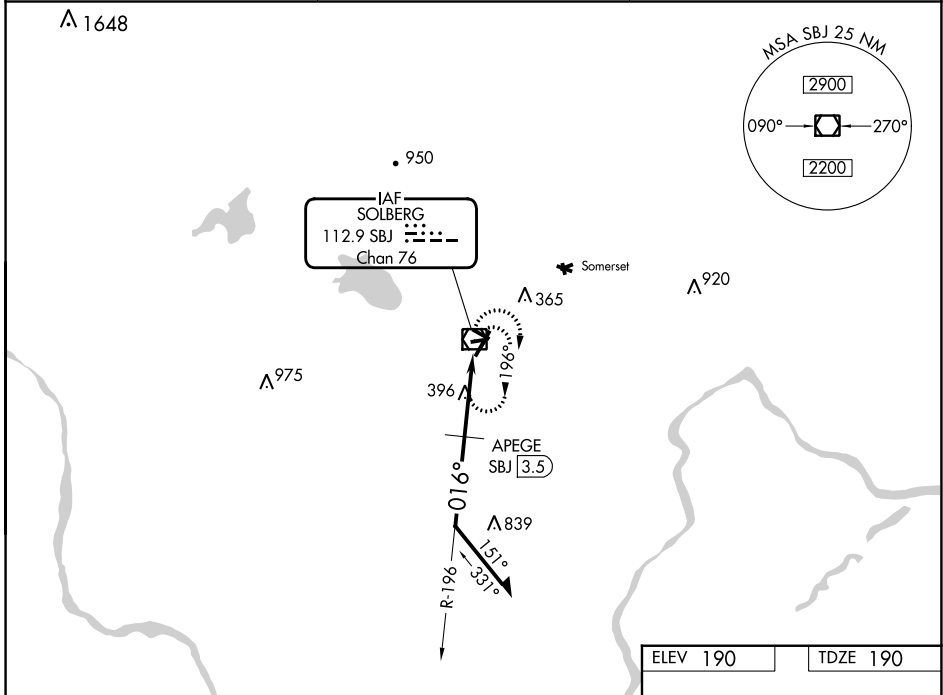
# VOR RWY 4

SOLBERG/HUNTERDON (N51)

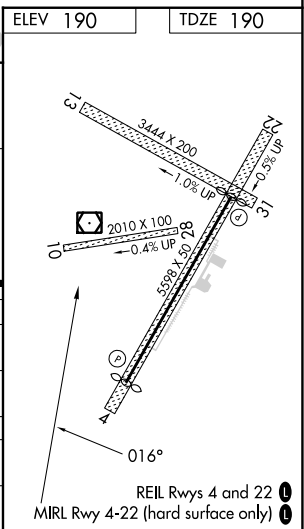
**NA** Rwy 4 helicopter visibility reduction below 3/4 SM NA. VDP NA with Newark Liberty Intl altimeter setting. Circling NA to Rwy 10-28 and 13-31. Obtain local altimeter setting on CTAF: when local altimeter setting not received, use Newark Liberty Intl altimeter setting and increase all MDAs 100 feet and S-04 visibility Cat B 1/4 SM and Circling Cat B 1/4 SM.

**MISSED APPROACH:** Climbing right turn to 2100 direct SBJ VOR/DME, continue climb-in-hold to 2100.

NEW YORK APP CON <b>132.8 379.9</b>	GCO <b>121.725</b>	UNICOM <b>122.8 (CTAF) 0</b>
--	-----------------------	---------------------------------



CATEGORY	A	B	C	D
S-4	1200-1 1/4 1010 (1100-1 1/4)	1200-1 1/2 1010 (1100-1 1/2)		NA
CIRCLING	1200-1 1/4 1010 (1100-1 1/4)	1200-1 1/2 1010 (1100-1 1/2)		NA
APEGE DME MINIMUMS				
S-4	840-1	650 (700-1)		NA
CIRCLING	840-1	650 (700-1)		NA



NE-2, 11 JUL 2024 to 08 AUG 2024

NE-2, 11 JUL 2024 to 08 AUG 2024