

LOC I-SKC 109.5	APP CRS 103°	Rwy Idg 5849
		TDZE 901
		Apt Elev 911


ILS or LOC RWY 10

WAUKESHA COUNTY (U/S)

RADAR required for procedure entry.

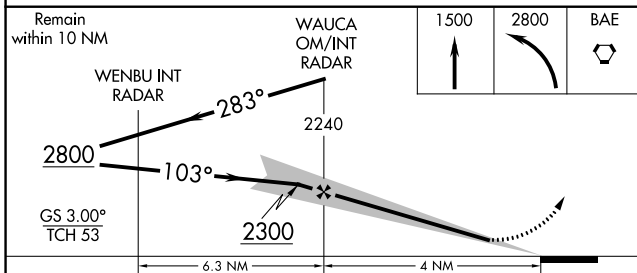
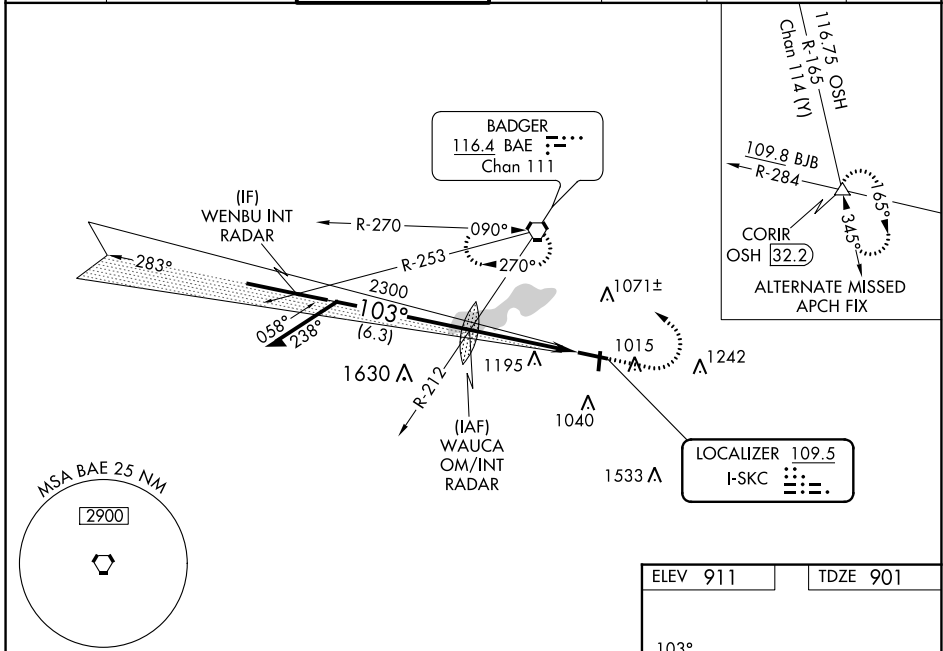
⚠ For inoperative MALSRR, increase S-LOC 10 Cat C/D visibility to 1 3/8 mile. For inop MALSRR when using Lawrence J Timmerman altimeter setting, increase S-LOC 10 Cat C/D visibility to 1 3/8 mile. When local altimeter setting not received, use Lawrence J Timmerman altimeter setting: increase DA to 1147 feet; increase all MDAs 60 feet and increase S-LOC 10 Cat C and D and Circling Cat C and D visibility 1/4 SM.

MALSRR



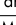


MISSED APPROACH:
Climb to 1500 then climbing left turn to 2800 direct BAE VORTAC and hold.

ATIS 118.875	MILWAUKEE APP CON 125.35 307.0	WAUKESHA TOWER * 123.7 (CTAF) 	GND CON 121.6	CLNC DEL 121.6	CLNC DEL 128.7 <small>(When twr closed)</small>	UNICOM 122.95
------------------------	--	---	-------------------------	--------------------------	--	-------------------------



ELEV 911	TDZE 901
----------	----------

HIRL Rwy 10-28 
 MIRL Rwy 18-36 
 REIL Rwy 18, 28 and 36 
 FAF to MAP 4 NM
 Knots: 60 90 120 150 180
 Min:Seq: 4:00 2:40 2:00 1:36 1:20

EC-3, 11 JUL 2024 to 08 AUG 2024

EC-3, 11 JUL 2024 to 08 AUG 2024