

(UECKR6.UECKR) 24137

UECKR SIX DEPARTURE (RNAV)

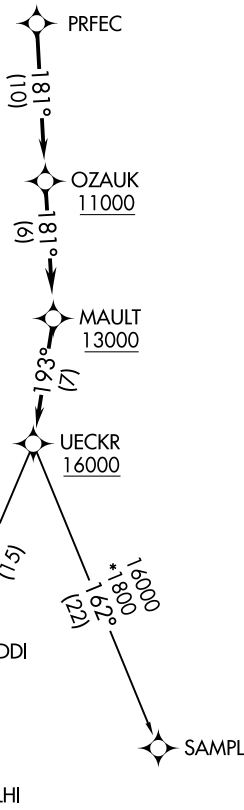
WAUKESHA COUNTY (UES)
WAUKESHA, WISCONSIN

AL-5078 (FAA)

ATIS
118.875
CLNC DEL
121.6
MILWAUKEE CLNC DEL
128.7 (when twr closed)
GND CON
121.6
MILWAUKEE DEP CON
125.35 307.0



**TOP ALTITUDE:
ASSIGNED BY ATC**



TAKEOFF MINIMUMS

Rwys 18, 28, 36: Standard.
Rwy 10: 400-2½ or standard with minimum climb of 316' per NM to 1400.

- NOTE: RNAV 1.
- NOTE: GPS or DME/DME/IRU required.
- NOTE: RADAR required.
- NOTE: Turbojet aircraft maintain 250K until advised by ATC.
- NOTE: Notify ATC if unable to comply with crossing restrictions.

NOTE: Chart not to scale.

DEPARTURE ROUTE DESCRIPTION

Climb on assigned heading for RADAR vectors to PRFEC, thence...

...on track 181° to cross OZAUK at or above 11000, then on track 181° to cross MAULT at or above 13000, then on track 193° to cross UECKR at or above 16000, then on (transition). Maintain ATC assigned altitude, expect filed altitude ten minutes after departure.

DELHI TRANSITION (UECKR6.DELHI)

SAMPL TRANSITION (UECKR6.SAMPL)

UECKR SIX DEPARTURE (RNAV)

(UECKR6.UECKR) 26MAR20

WAUKESHA, WISCONSIN
WAUKESHA COUNTY (UES)

EC-3, 11 JUL 2024 to 08 AUG 2024

EC-3, 11 JUL 2024 to 08 AUG 2024