

WAAS CH 65629 W15A	APP CRS 152°	Rwy Idg TDZE 12 Apt Elev 15	6500
--	------------------------	---	-------------

RNAV (GPS) RWY 15

LAKE CHARLES RGNL (LCH)

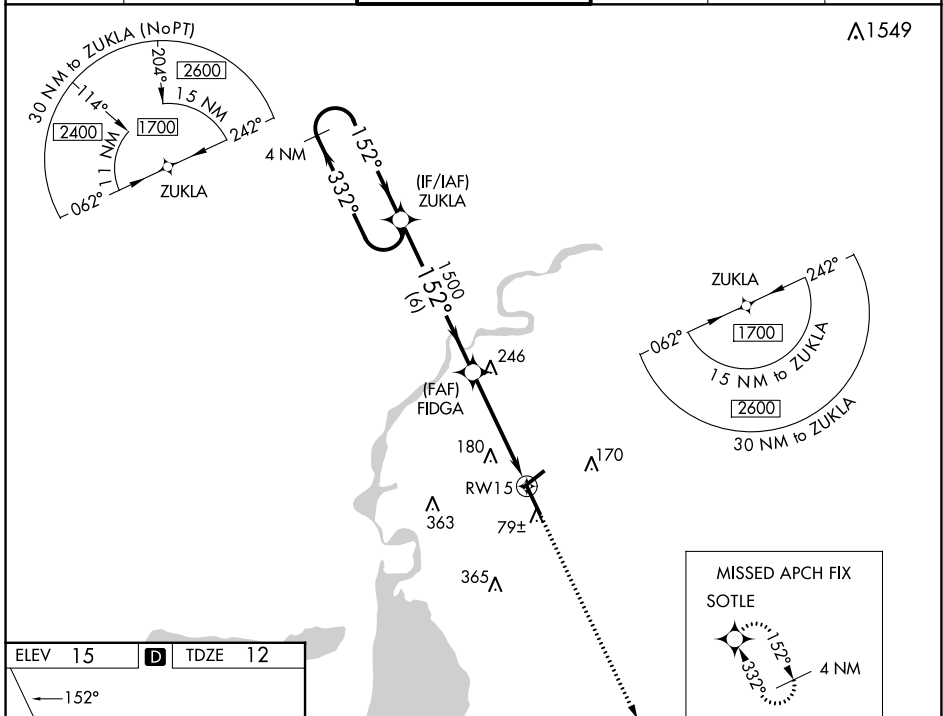
RNP APCH.

For uncompensated Baro-VNAV systems, LNAV/VNAV NA below -3°C (27°F) or above 43°C (109°F). For inop MALS, increase LNAV-VNAV all Cats visibility to ¾ and LNAV Cats C and D to 1 ½ mile. **RVR 1800 authorized with use of FD or AP or HUD to DA.

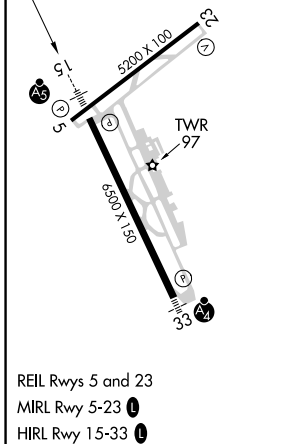


MISSED APPROACH:
Climb to 1900 direct
SOTLE and hold.

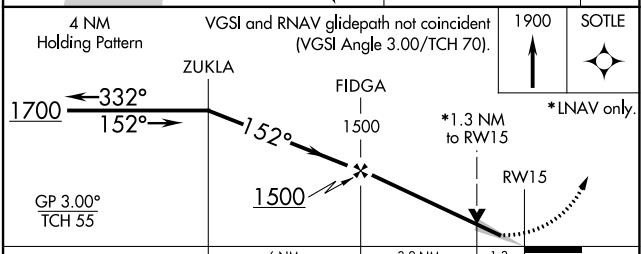
ATIS 118.75	LAKE CHARLES APP CON * 119.35 353.75	LAKE CHARLES TOWER * 120.7 (CTAF) 0 257.8	GND CON 121.8	CLNC DEL 126.25	UNICOM 122.95
-----------------------	--	---	-------------------------	---------------------------	-------------------------



ELEV 15	D	TDZE 12
---------	----------	---------



REIL Rws 5 and 23
MIRL Rwy 5-23
HIRL Rwy 15-33



CATEGORY	A	B	C	D
LPV DA		212/24	200 (200-½)	
LNAV/VNAV DA		301/24	289 (300-½)	
LNAV MDA	500/24	488 (500-½)	500/50	488 (500-1)
C CIRCLING	500-1	485 (500-1)	580-1½ 565 (600-1½)	680-2¼ 665 (700-2¼)

SC-4, 11 JUL 2024 to 08 AUG 2024

SC-4, 11 JUL 2024 to 08 AUG 2024