

DUBLIN, VIRGINIA

AL-5084 (FAA)

23166

| | | |
|---------------------------|------------------------|--|
| LOC I-PSK 110.9 | APP CRS 058° | Rwy Idg TDZE Apt Elev 6201 2105 2105 |
|---------------------------|------------------------|--|

ILS or LOC Z RWY 6

NEW RIVER VALLEY (PSK)

NA Inop table does not apply to S-ILS 6 all Cats and S-LOC 6 Cats A and B. For inop ALS, increase S-LOC 6 Cat C/D visibility to 1 3/8 SM. Circling NA for Cat D northwest of Rwy 6-24.

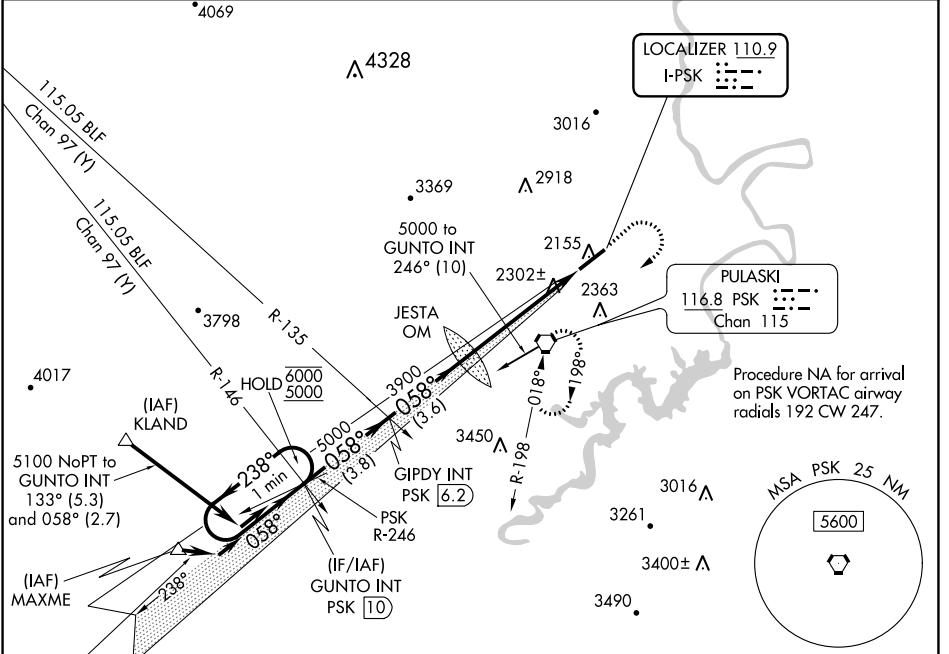
MALSR MISSED APPROACH: Climb to 3000 then climbing right turn to 5000 direct PSK VORTAC and hold, continue climb-in-hold to 5000.

AWOS-3
127.375

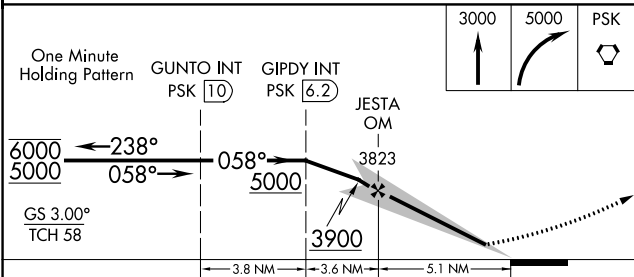
ROANOKE APP CON
126.0 339.8

ROANOKE CLNC DEL
121.7

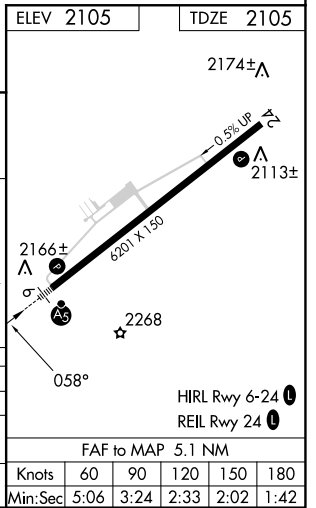
UNICOM
122.7 (CTAF)



ELEV 2105 TDZE 2105



| CATEGORY | A | B | C | D |
|----------|-----------------------|-----------------------|-----------------------|-------------------------------|
| S-ILS 6 | | 2305-1 | 200 (200-1) | |
| S-LOC 6 | | 2560-1 | 455 (500-1) | |
| CIRCLING | 2620-1 515 (600-1) | 2680-1 575 (600-1) | 2780-2 675 (700-2) | 2780-2 1/4 675 (700-2 1/4) |



DUBLIN, VIRGINIA
Amdt 5B 25FEB21

37°08'N-80°41'W

NEW RIVER VALLEY (PSK)

ILS or LOC Z RWY 6

NE-3, 11 JUL 2024 to 08 AUG 2024

NE-3, 11 JUL 2024 to 08 AUG 2024