

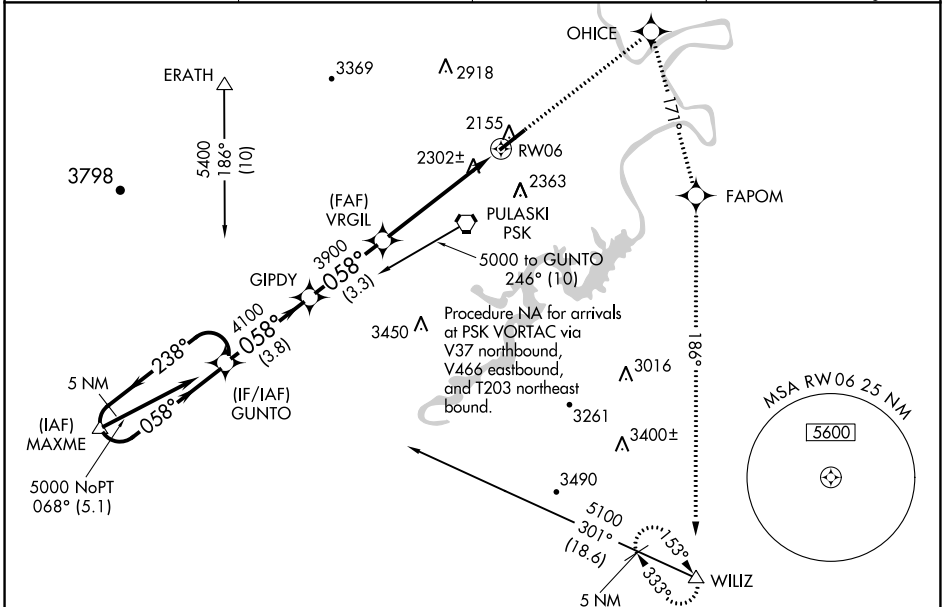
WAAS CH 87015 W06A	APP CRS 058°	Rwy Idg TDZE Apt Elev	6201 2105 2105
--	------------------------	-----------------------------	---

RNAV (GPS) RWY 6

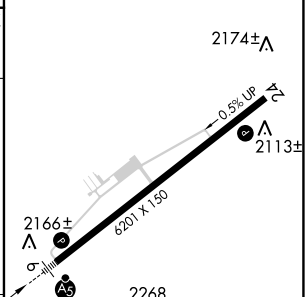
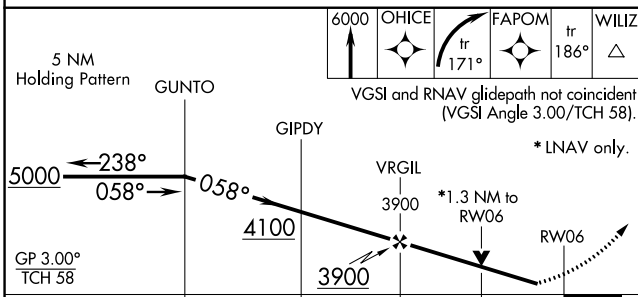
NEW RIVER VALLEY (PSK)

RNP APCH.	<p>For uncompensated Baro-VNAV systems, LNAV/VNAV NA below -19°C or above 44°C. When local altimeter setting not received, use Blacksburg altimeter setting and increase all DA 36 feet, and all MDA 40 feet. VDP and Baro-VNAV NA when using Blacksburg altimeter setting. Inop table does not apply to LPV all Cats and LNAV Cats A and B. For inop MALSR, increase LNAV Cat C visibility to 1/4 SM. Circling NA for Cat D northwest of Rwy 6-24.</p>	<p>MALSR</p>	<p>MISSED APPROACH: Climb to 6000 direct OHICE and right turn via track 171° to FAPOM and via track 186° to WILIZ and hold.</p>
-----------	---	--------------	---

AWOS-3 127.375	ROANOKE APP CON 126.0 339.8	ROANOKE CLNC DEL 121.7	UNICOM 122.7 (CTAF)
--------------------------	---------------------------------------	----------------------------------	-------------------------------



ELEV 2105	TDZE 2105
-----------	-----------



CATEGORY	A	B	C	D
LPV DA		2305-1	200 (200-1)	
LNAV/ DA		2597-1¼	492 (500-1¼)	
LNAV MDA		2560-1	455 (500-1)	
CIRCLING	2620-1 515 (600-1)	2680-1 575 (600-1)	2780-2 675 (700-2)	2780-2¼ 675 (700-2¼)

HIRL Rwy 6-24

REIL Rwy 24

NE-3, 11 JUL 2024 to 08 AUG 2024

NE-3, 11 JUL 2024 to 08 AUG 2024