

LOC I-INL 111.95	APP CRS 313°	Rwy Idg TDZE Apt Elev	7400 1166 1182
----------------------------	------------------------	-----------------------------	---

ILS or LOC RWY 31

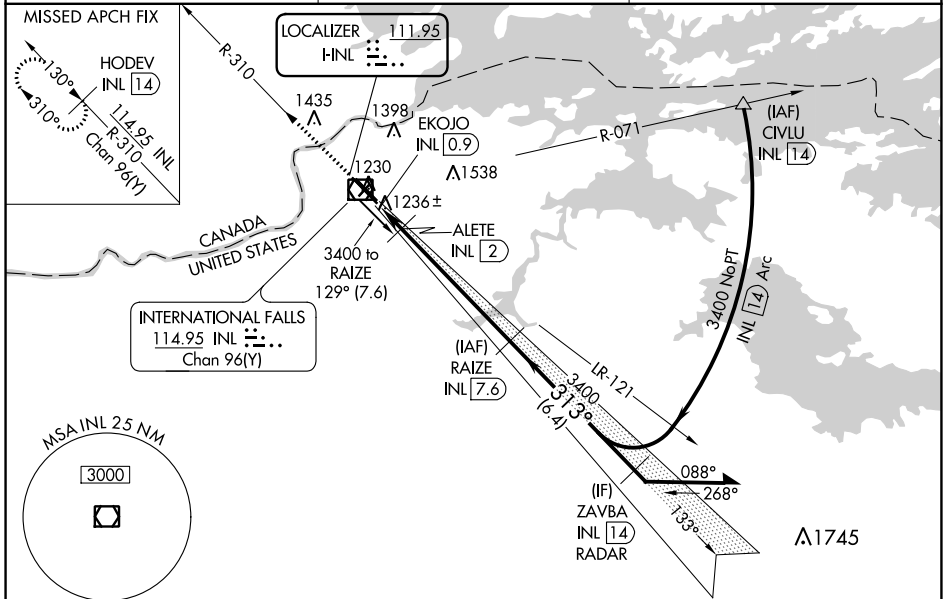
FALLS INTL/EINARSON FLD (INL)

DME required.

MAFSR

MISSED APPROACH: Climb to 3300 on INL VOR/DME R-310 to HODEV/INL 14 DME and hold.

ASOS 120.0	MINNEAPOLIS CENTER 120.9 377.1	UNICOM 122.8 (CTAF)
----------------------	--	-------------------------------



ELEV 1182	D	TDZE 1166	3300	HODEV INL 14	RAIZE INL 7.6	Remain within 10 NM					
INL R-310		3400		ALETE INL 2		3400		ZAVBA INL 14 RADAR		313° 3400	
EKOJO INL 0.9		1620		3400		3400		GS 3.00°		TCH 45	
0.2		1.1 NM		5.6 NM		6.4 NM					
CATEGORY	A		B		C		D				
S-ILS 31	1366-1/2		200 (200-1/2)								
S-LOC 31	1620-1/2		454 (500-1/2)		1620-7/8		454 (500-7/8)				
C CIRCLING	1620-1 438 (500-1)		1680-1 498 (500-1)		1900-2 718 (800-2)		1900-2 1/4 718 (800-2 1/4)				
ALETE FIX MINIMUMS #											
S-LOC 31	1500-1/2		334 (400-1/2)								
C CIRCLING	1620-1 438 (500-1)		1680-1 498 (500-1)		1900-2 718 (800-2)		1900-2 1/4 718 (800-2 1/4)				

NC-1, 11 JUL 2024 to 08 AUG 2024

NC-1, 11 JUL 2024 to 08 AUG 2024