

WAAS CH 53706 W13A	APP CRS 133°	Rwy Idg 7400 TDZE 1184 Apt Elev 1182
--	------------------------	---

RNAV (GPS) RWY 13

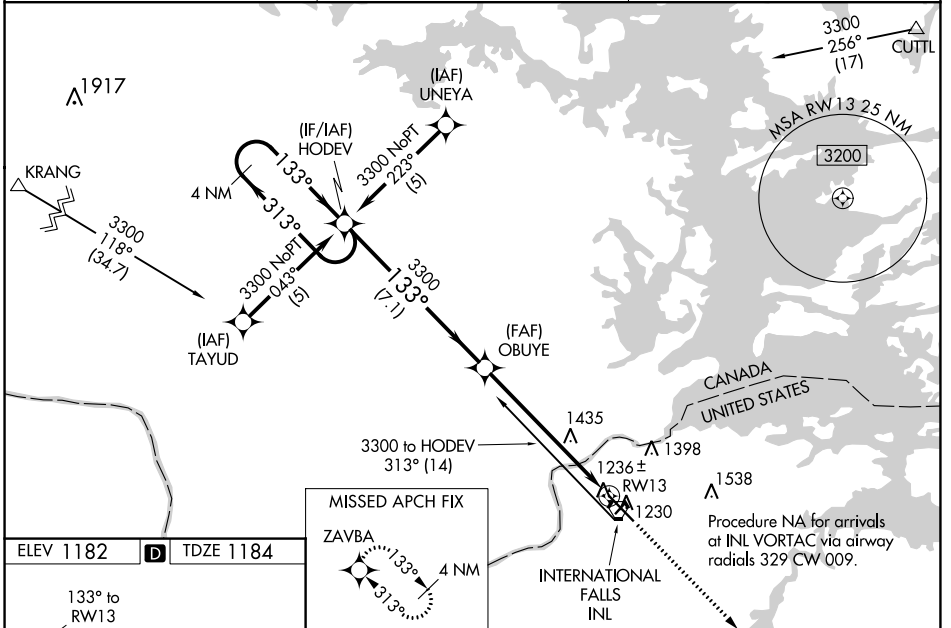
FALLS INTL/EINARSON FLD (INL)

V When local altimeter setting not received, use Baudette altimeter setting: increase LPV DA to 1561 feet and visibility all Cats $\frac{1}{4}$ SM; increase LNAV/VNAV DA to 1796 feet and visibility all Cats $\frac{3}{4}$ SM; increase all MDAs 140 feet and visibility LNAV Cat C and D and Circling Cat C and D $\frac{1}{2}$ SM. For inop MALS R when using Baudette altimeter setting, increase LPV visibility $\frac{1}{2}$ mile all Cats, inop table does not apply to LNAV/VNAV. VDP NA when using Baudette altimeter setting. Baro-VNAV NA when using Baudette altimeter setting. Circling to Rwy 4-22 NA at night. For uncompensated Baro-VNAV systems, LNAV/VNAV NA below -17°C (2°F) or above 47°C (116°F). DME/DME RNP-0.3 NA.

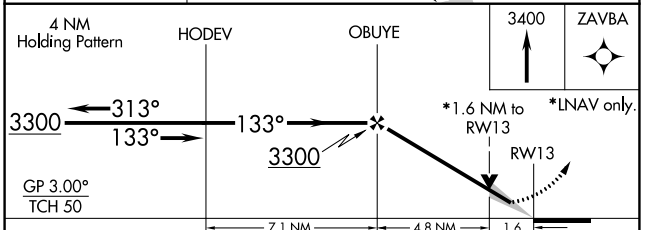
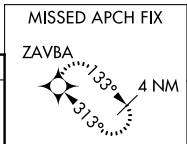
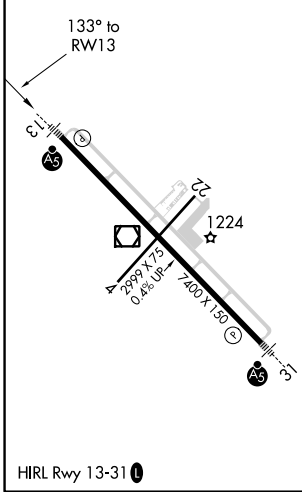
MALS R

MISSED APPROACH:
Climb to 3400 direct ZAVBA and hold.

ASOS 120.0	MINNEAPOLIS CENTER 120.9 377.1	UNICOM 122.8 (CTAF)
----------------------	--	-------------------------------



ELEV 1182	D	TDZE 1184
-----------	----------	-----------



CATEGORY	A	B	C	D
LPV DA		1434- $\frac{1}{2}$	250 (300- $\frac{1}{2}$)	
LNAV/VNAV DA		1669-1 $\frac{1}{4}$	485 (500-1 $\frac{1}{4}$)	
LNAV MDA	1760- $\frac{1}{2}$	576 (600- $\frac{1}{2}$)	1760-1 576 (600-1)	1760-1 $\frac{1}{4}$ 576 (600-1 $\frac{1}{4}$)
CIRCLING	1760-1	578 (600-1)	1900-2 718 (800-2)	1900-2 $\frac{1}{4}$ 718 (800-2 $\frac{1}{4}$)

NC-1, 11 JUL 2024 to 08 AUG 2024

NC-1, 11 JUL 2024 to 08 AUG 2024