

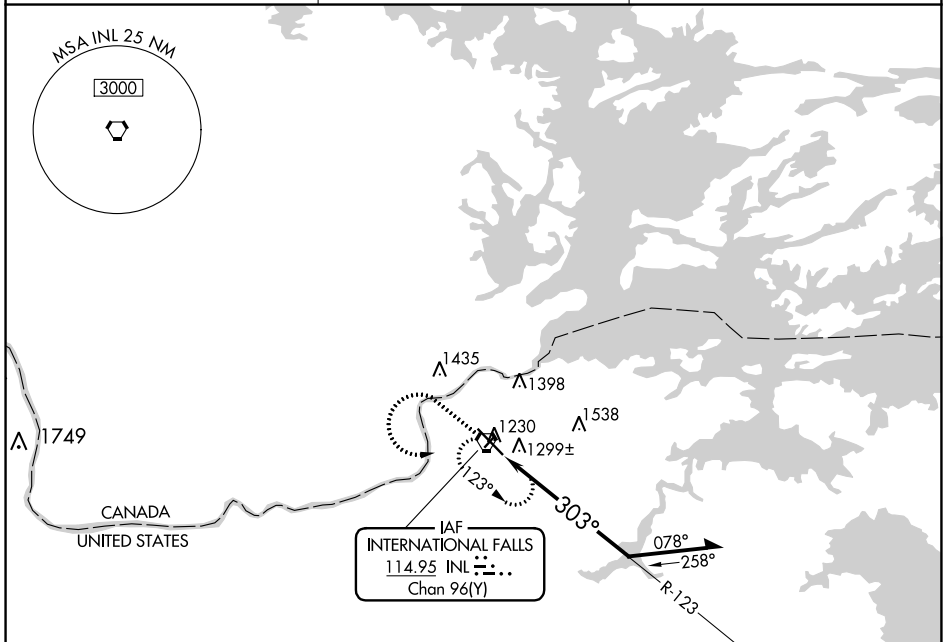
VORTAC INL <b>114.95</b> Chan 96(Y)	APP CRS <b>303°</b>	Rwy Idg TDZE Apt Elev	<b>7400</b> <b>1174</b> <b>1182</b>
---	------------------------	-----------------------------	---

# VOR RWY 31

FALLS INTL/EINARSON FLD (INL)

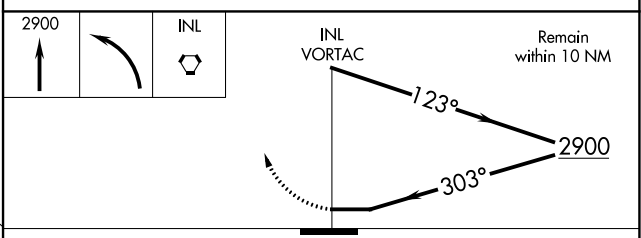
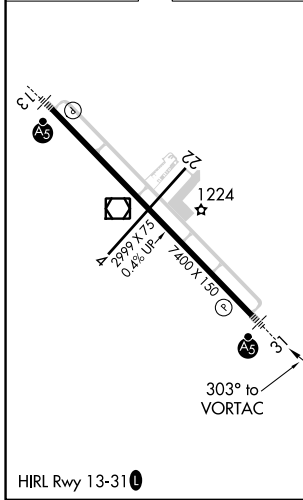
<b>⚠</b> For inop MALS/R, increase S-31 Cat D visibility to 1¼. Circling to Rwy 4-22 NA at night.	<b>MALS/R</b> 	<b>MISSED APPROACH:</b> Climb to 2900 then left turn direct INL VORTAC and hold.
---	-------------------	--

<b>ASOS</b> <b>120.0</b>	<b>MINNEAPOLIS CENTER</b> <b>120.9 377.1</b>	<b>UNICOM</b> <b>122.8 (CTAF) 0</b>
-----------------------------	---	--



IAF  
INTERNATIONAL FALLS  
114.95 INL  
Chan 96(Y)

ELEV 1182	<b>D</b>	TDZE 1174
-----------	----------	-----------



CATEGORY	A	B	C	D
S-31	1600-½	426 (500-½)	1600-¾ 426 (500-¾)	1600-1 426 (500-1)
CIRCLING	1620-1 438 (500-1)	1680-1 498 (500-1)	1900-2 718 (800-2)	1900-2¼ 718 (800-2¼)

NC-1, 11 JUL 2024 to 08 AUG 2024

NC-1, 11 JUL 2024 to 08 AUG 2024