

LOC/DME I-TBN <b>110.9</b> Chan 46	APP CRS <b>147°</b>	Rwy Idg <b>5535</b> TDZE <b>1158</b> Apt Elev <b>1160</b>
--	------------------------	---

# ILS or LOC RWY 15

WAYNESVILLE-ST ROBERT RGNL FORNEY FLD (TBN)

**⚠** Circling NA west of Rwy 15-33. For inop ALS increase S-LOC 15 Cats C/D visibility to 1 1/2 SM. When local altimeter setting not received, use Rolla Nil altimeter setting and increase DA to 1427 feet; and all MDAs 80 feet, increase S-LOC 15 Cat C/D and Circling Cat C visibility 1/4 SM and WOKVI fix minimums S-LOC 15 Cat C/D and Circling Cat C visibility 1/4 SM. VDP NA when using Rolla Nil altimeter setting. For inop ALS when using Rolla Nil altimeter setting increase S-LOC 15 WOKVI fix minimums Cats C/D visibility to 1/4 SM. Inop table does not apply to S-ILS 15, S-LOC 15 Cat A/B, and WOKVI fix minimums S-LOC 15.

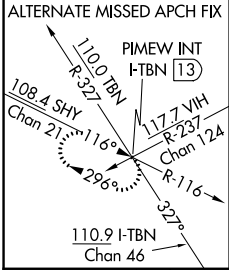
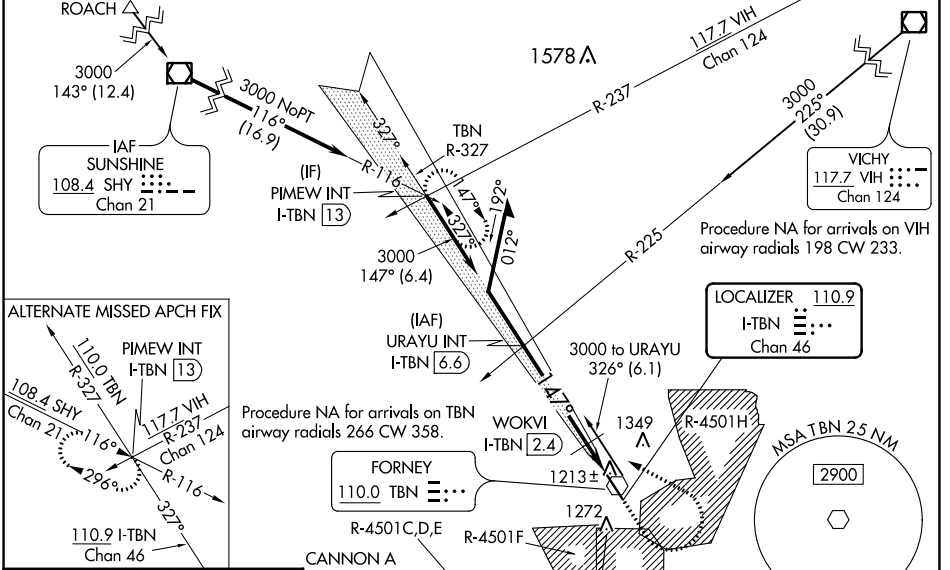
**MALSR**  
MISSED APPROACH: Climb to 1700 then climbing left turn to 3000 on heading 298° and TBN VOR R-327 to PIMEW INT/I-TBN 13 DME and hold.

D-ATIS  
**118.7 229.4**

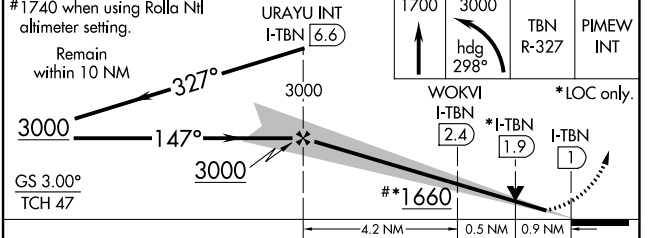
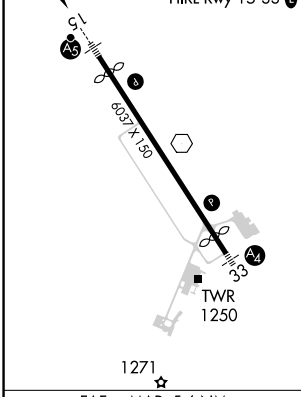
KANSAS CITY CENTER  
**128.35 284.675**

FORNEY TOWER \*  
**125.4 (CTAF) 0 268.7**

GND CON  
**123.75 256.8**



ELEV 1160 TDZE 1158  
REIL Rwy 15 and 33  
HIRL Rwy 15-33



CATEGORY	A	B	C	D
S-ILS 15		1358-1	200 (200-1)	
S-LOC 15		1660-1	502 (500-1)	
<b>C</b> CIRCLING	1660-1	500 (500-1)	1660-1 1/2 500 (500-1 1/2)	1720-2 560 (600-2)
WOKVI FIX MINIMUMS				
S-LOC 15	1500-1 342 (400-1)			
<b>C</b> CIRCLING	1580-1 420 (500-1)	1660-1 500 (500-1)	1660-1 1/2 500 (500-1 1/2)	1720-2 560 (600-2)

FORT LEONARD WOOD, MISSOURI  
Amdt 2b 15JUN23

WAYNESVILLE-ST ROBERT RGNL FORNEY FLD (TBN)  
37°44'N-92°08'W

# ILS or LOC RWY 15

NC-3, 11 JUL 2024 to 08 AUG 2024

NC-3, 11 JUL 2024 to 08 AUG 2024