

APP CRS 345°	Rwy Idg TDZE Apt Elev	3999 667 697
------------------------	-----------------------------	---

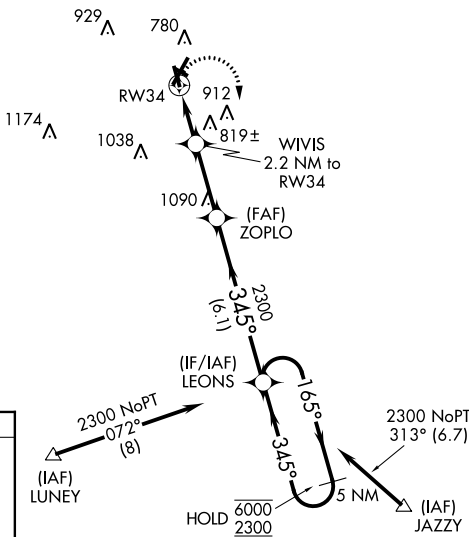
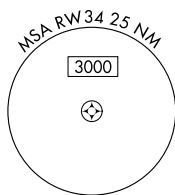
RNAV (GPS) RWY 34

VERMILION RGNL (DNTV)

RNP APCH - GPS.
 ▼ Circling NA to Rwy 12 and 30.
 ▲ Rwy 34 helicopter visibility reduction below ¾ SM NA.

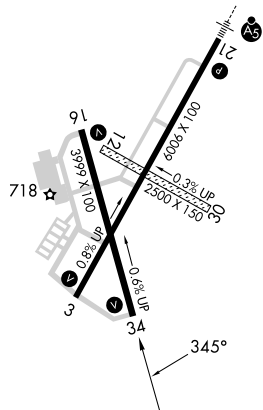
MISSED APPROACH: Climbing right turn to 2300 direct LEONS and hold.

AWOS-3 119.275	CHAMPAIGN APP CON * 121.35 285.65	CLNC DEL 121.7	UNICOM 122.7 (CTAF)
--------------------------	---	--------------------------	-------------------------------

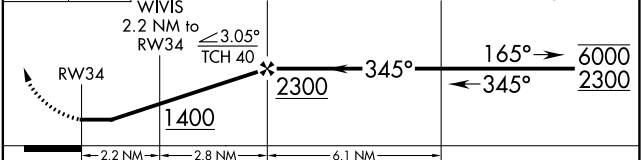


1999 A

ELEV 697	TDZE 667
HIRL Rwy 3-21	
MIRL Rwy 16-34	
REIL Rwy 16 and 34	



2300 LEONS	VGSI and descent angles not coincident (VGSI Angle 3.00/TCH 14).	5 NM Holding Pattern
------------	--	----------------------



CATEGORY	A	B	C	D
LNAV MDA	1080-1	413 (400-1)	1080-1¼	413 (400-1¼)
CIRCLING	1160-1	463 (500-1)	1240-1½ 543 (600-1½)	1340-2 643 (700-2)

EC-3, 11 JUL 2024 to 08 AUG 2024

EC-3, 11 JUL 2024 to 08 AUG 2024