

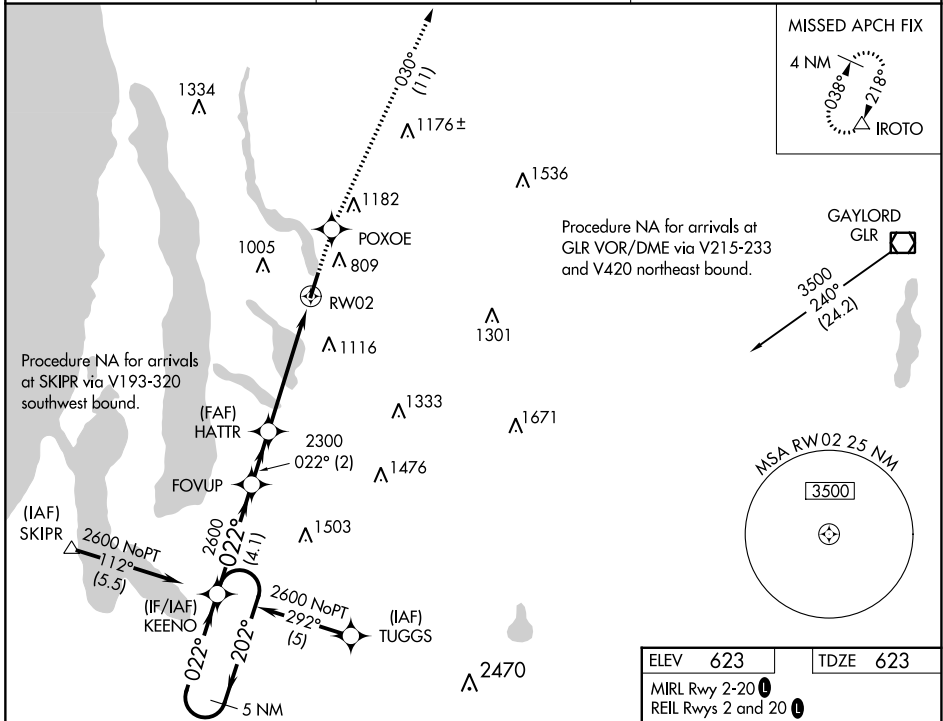
WAAS CH <b>56301</b> <b>W02A</b>	APP CRS <b>022°</b>	Rwy Idg TDZE <b>623</b> Apt Elev <b>623</b>	<b>5003</b>
--	------------------------	---	-------------

# RNAV (GPS) RWY 2

ANTRIM COUNTY (ACB)

RNP APCH-GPS.	VDP NA when using Cherry Capital altimeter setting. When local altimeter setting not received, use Cherry Capital altimeter setting and increase all DAs/MDAs 60 feet and Circling visibilities Cat B and C ¼ SM.	MISSED APPROACH: Climb to 3000 direct POXOE and via 030° track to IROTO and hold.
---------------	---	---

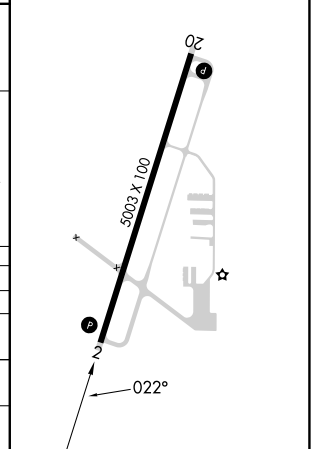
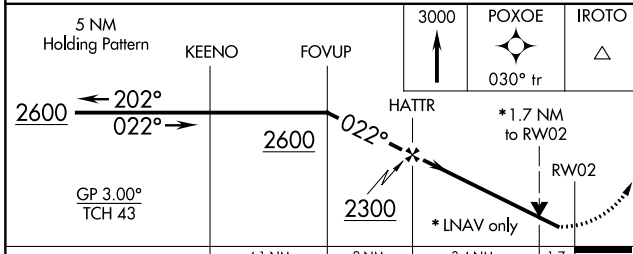
AWOS-3P <b>119.275</b>	MINNEAPOLIS CENTER <b>132.9 338.3</b>	UNICOM <b>122.7 (CTAF) 0</b>
---------------------------	--	---------------------------------



EC-1, 11 JUL 2024 to 08 AUG 2024

EC-1, 11 JUL 2024 to 08 AUG 2024

ELEV <b>623</b>	TDZE <b>623</b>
MIRL Rwy 2-20 <b>0</b>	REIL Rwys 2 and 20 <b>0</b>



CATEGORY	A	B	C	D
LPV DA	908-1 285 (300-1)			
LNAV/VNAV DA	NA			
LNAV MDA	1220-1 597 (600-1)	1220-1½ 597 (600-1½)	1220-1¾ 597 (600-1¾)	
CIRCLING	1360-1 737 (800-1)	1380-1 757 (800-1)	1560-2¾ 937 (1000-2¾)	1640-3 1017 (1100-3)