


|  |                        |   |
|--|------------------------|---|
| MHZ VORTAC<br><b>113.2</b><br>Chan <b>79</b> | APP CRS<br><b>171°</b> | Rwy ldg <b>8500</b><br>TDZE <b>312</b><br>Apt Elev <b>346</b> |
|--|------------------------|---|

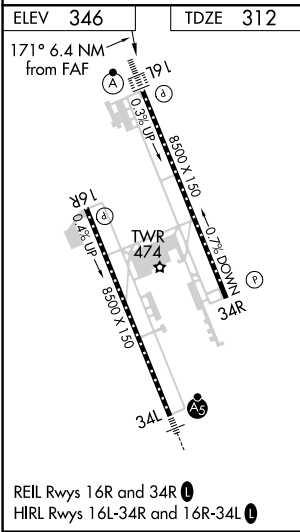
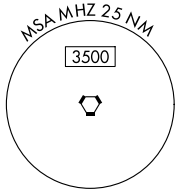
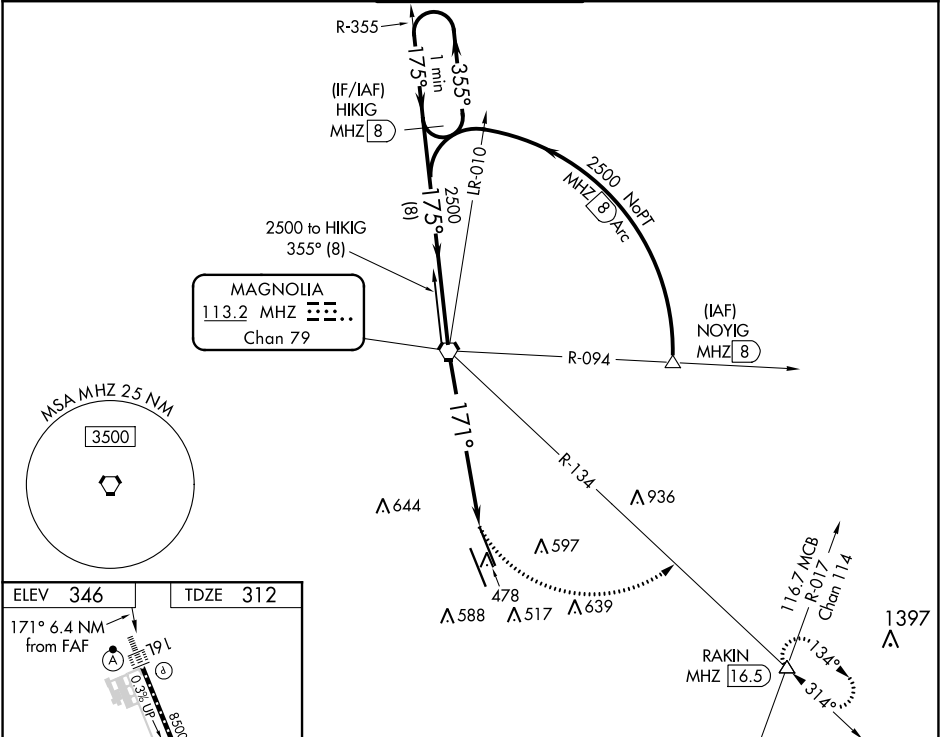
# VOR/DME or TACAN RWY 16L

JACKSON-MEDGAR WILEY EVERS INTL (JAN)

**▽** VDP NA with Hawkins Fld altimeter setting. When local altimeter setting not received, use Hawkins Fld altimeter setting and increase all MDA 20 feet; increase S-16L Cats C/D/E visibility to 1½ mile. For inop ALSF, increase S-16L Cats A/B visibility to 1 mile; Cat E to 1½. For inop ALSF when using Hawkins Fld altimeter setting, increase S-16L Cats A/B visibility to 1 mile, and Cats C/D/E visibility to 1½. Circling NA for Cat E southwest of Rwy 16R-34L. Helicopter visibility reduction below ¾ SM NA.

**ALSF-2**  
**ⓐ**   
MISSED APPROACH: Climbing left turn to 3000 on heading 103° and MHZ VORTAC R-134 to RAKIN INT/ MHZ 16.5 DME and hold.

|                       |   |  |                               |                         |
|-----------------------|---|--|-------------------------------|-------------------------|
| ATIS<br><b>121.05</b> | JACKSON APP CON *<br><b>123.9 317.7</b> | JACKSON TOWER *<br><b>120.9 (CTAF) 352.0</b> | GND CON<br><b>121.7 348.6</b> | UNICOM<br><b>122.95</b> |
|-----------------------|---|--|-------------------------------|-------------------------|



|                            |                      |                      |                        |                      |                         |
|----------------------------|----------------------|----------------------|------------------------|----------------------|-------------------------|
| One Minute Holding Pattern | HIKIG MHZ 8          | MHZ VORTAC           | 3000 hdg 103°          | MHZ R-134            | RAKIN △                 |
| 2500 ← 355°                | 175° →               | 2500                 | 171°                   | MHZ 4.9              | MHZ 6.4                 |
| 8 NM                       |                      | 4.9 NM               |                        | 1.5                  |                         |
| CATEGORY                   | A                    | B                    | C                      | D                    | E                       |
| S-16L                      | 860/40               | 548 (600-¾)          | 860/60                 | 548 (600-1½)         |                         |
| <b>C</b> CIRCLING          | 880-1<br>534 (600-1) | 900-1<br>554 (600-1) | 900-1½<br>554 (600-1½) | 960-2<br>614 (700-2) | 1040-2½<br>694 (700-2½) |

SC-4, 11 JUL 2024 to 08 AUG 2024

SC-4, 11 JUL 2024 to 08 AUG 2024