


VORTAC MHZ 113.2 Chan 79	APP CRS 352°	Rwy Idg TDZE 329 Apt Elev 346	8500
--	------------------------	---	-------------

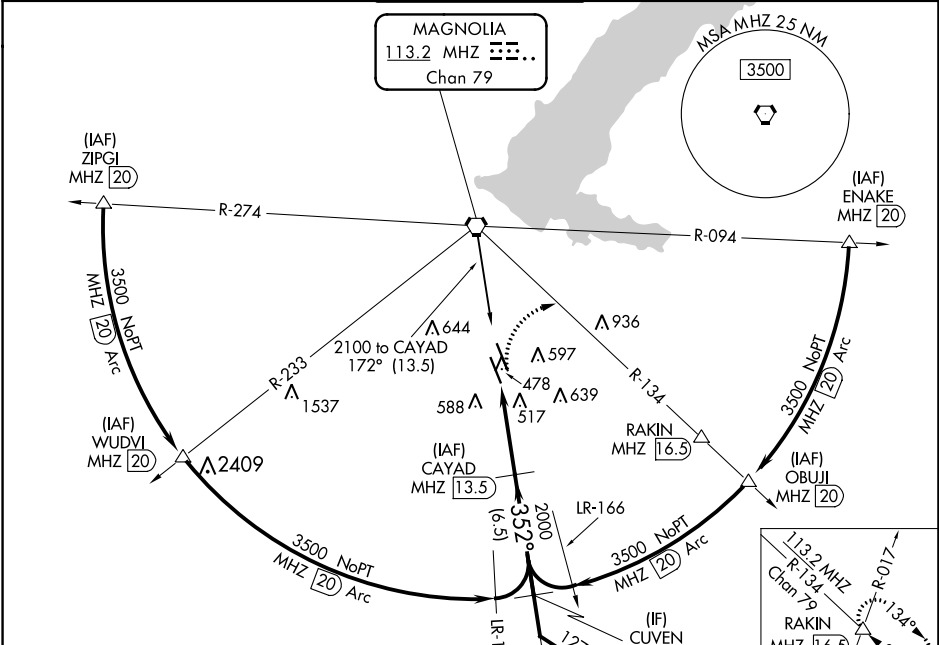
VOR/DME or TACAN RWY 34L

JACKSON-MEDGAR WILEY EVERS INTL (JAN)

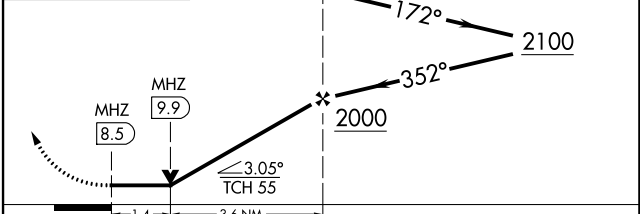
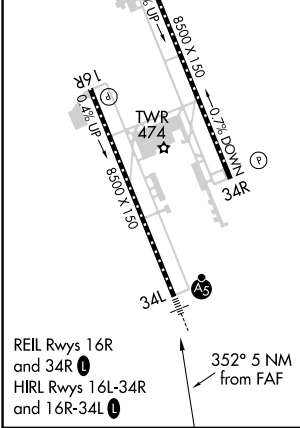
⚠ When local altimeter setting not received, use Hawkins Fld altimeter setting and increase all MDA 20 feet; increase S-34L Cats C/D/E visibility 1/8 mile. Circling NA for Cat E southwest of Rwy 16R-34L. Helicopter visibility reduction below 3/4 SM NA.

MALSR  MISSED APPROACH: Climbing right turn to 3000 on heading 120° and MHz VORTAC R-134 to RAKIN INT/ MHz 16.5 DME and hold.

ATIS 121.05	JACKSON APP CON* 123.9 317.7	JACKSON TOWER* 120.9 (CTAF) 352.0	GND CON 121.7 348.6	UNICOM 122.95
-----------------------	--	---	-------------------------------	-------------------------



ELEV 346	TDZE 329
----------	----------



CATEGORY	A	B	C	D	E
S-34L	840/55	511 (500-1)	840-1 3/8	511 (500-1 3/8)	
C CIRCLING	880-1 534 (600-1)	900-1 554 (600-1)	900-1 1/2 554 (600-1 1/2)	960-2 614 (700-2)	1040-2 1/2 694 (700-2 1/2)

SC-4, 11 JUL 2024 to 08 AUG 2024

SC-4, 11 JUL 2024 to 08 AUG 2024