

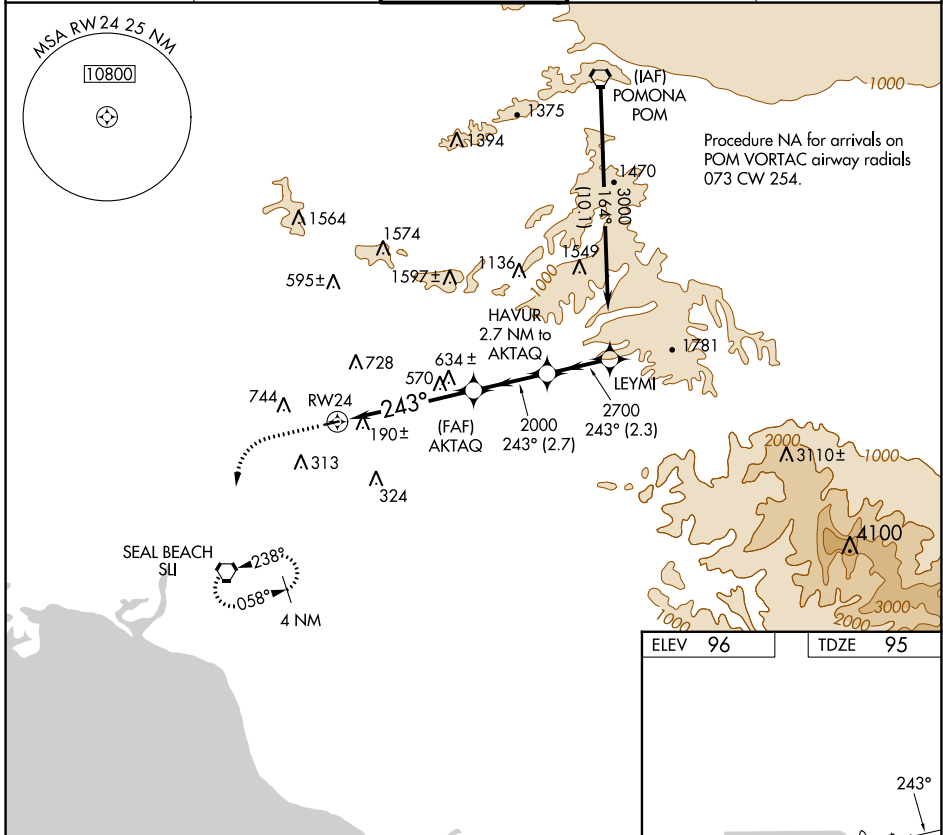
APP CRS	Rwy Idg	2868
243°	TDZE	95
	Apt Elev	96

RNAV (GPS) RWY 24

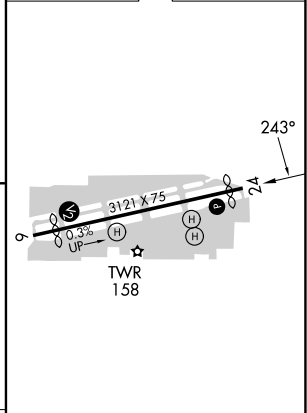
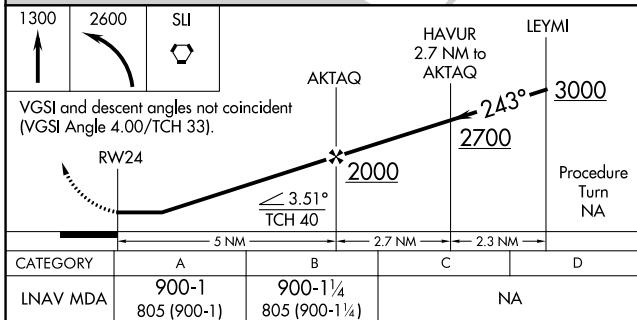
FULLERTON MUNI (F'UL)

RNP APCH.	MISSED APPROACH: Climb to 1300, then climbing left turn to 2600 direct SLI VORTAC and hold.
<p>▼ Inoperative table does not apply.</p> <p>▲ NA Helicopter visibility reduction below 1 SM NA.</p>	

ATIS 125.05	SOCAL APP CON 125.35 316.125	FULLERTON TOWER ★ 119.1 (CTAF) 0	GND CON 121.8	UNICOM 122.95
-----------------------	--	---	-------------------------	-------------------------



ELEV 96	TDZE 95
---------	---------



MIRL Rwy 6-24	REIL Rws 6 and 24	RLLS Rwy 24
---------------	-------------------	-------------

SW-3, 11 JUL 2024 to 08 AUG 2024

SW-3, 11 JUL 2024 to 08 AUG 2024