

VOR/DME EHK 117.3 Chan 120	APP CRS 177°	Rwy Idg TDZE Apt Elev 8653 5605 5622
---	------------------------	--

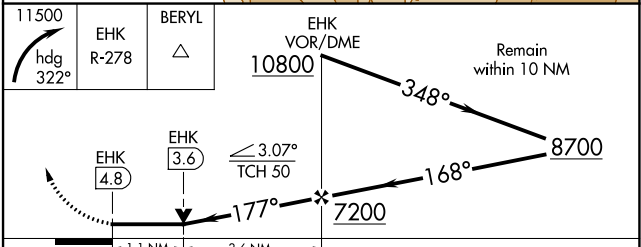
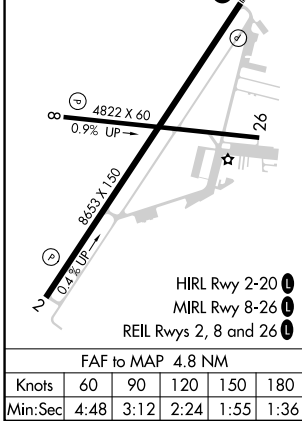
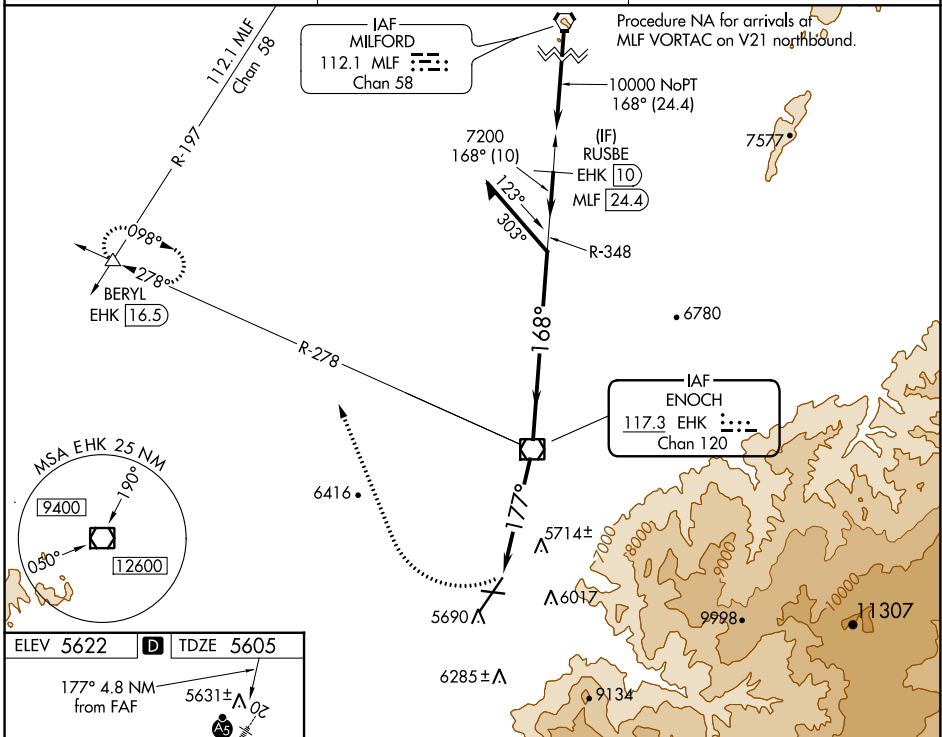
VOR RWY 20

CEDAR CITY RGNL (CDC)

⚠ Circling NA southeast of Rwy 2-20. For inop ALS S-20* increase Cat C/D visibility to 1½ SM.

MALSRL MISSED APPROACH: Climbing right turn to 11 500 on heading 322° and on EHK VOR/DME R-278 to BERYL INT/EHK 16.5 DME and hold, continue climb-in-hold to 11 500.
*Missed approach requires minimum climb of 247 feet per NM to 7500.

ASOS 119.025	SALT LAKE CITY CENTER 125.575 379.275	UNICOM 123.0 (CTAF)
------------------------	---	-------------------------------



CATEGORY	A	B	C	D
S-20*	6020-½ 415 (400-½)		6020-¾ 415 (400-¾)	
S-20	6300-½ 695 (700-½)		6300-1½ 695 (700-1½)	
C CIRCLING	6300-1 678 (700-1)		6300-2 678 (700-2)	6300-2½ 678 (700-2½)

SW-4, 11 JUL 2024 to 08 AUG 2024

SW-4, 11 JUL 2024 to 08 AUG 2024