

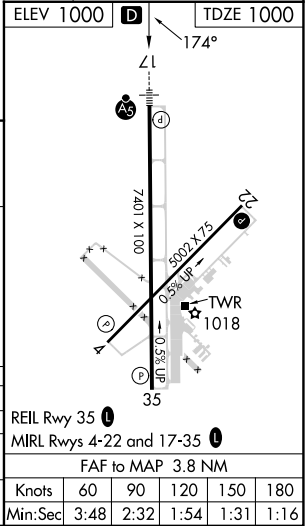
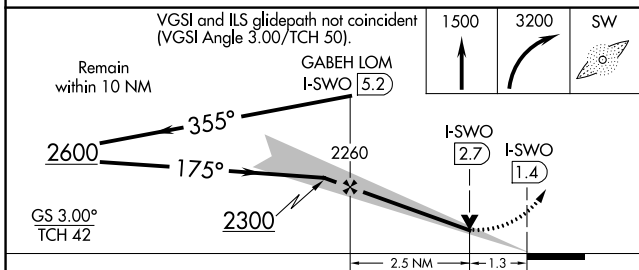
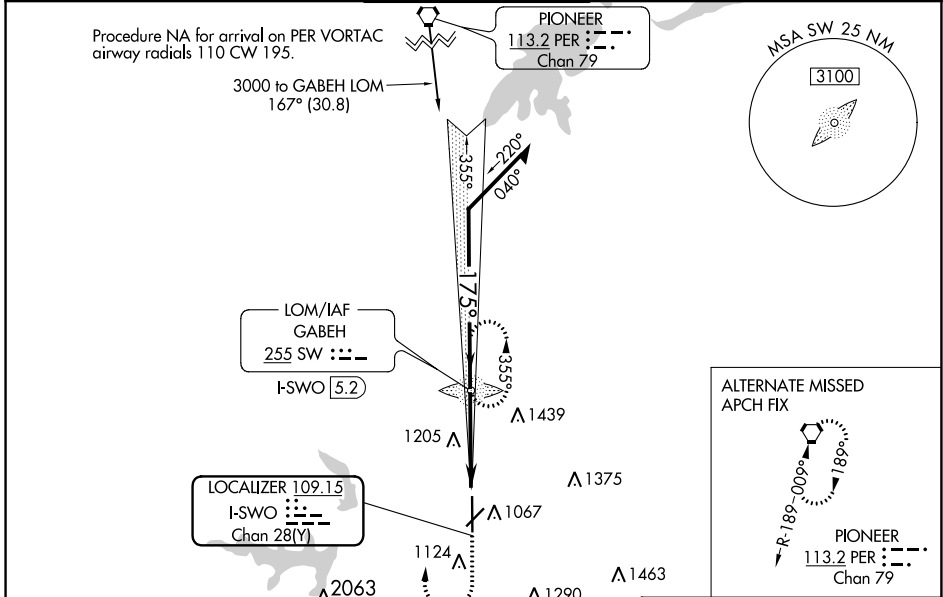
LOC/DME I-SWO 109.15 Chan 28 (Y)	APP CRS 175°	Rwy Idg 7401 TDZE 1000 Apt Elev 1000
--	------------------------	---

ILS or LOC RWY 17

STILLWATER RGNL (SWO)

ADF required.	MALSR AS	<p>MISSED APPROACH: Climb to 1500 then climbing right turn to 3200 direct GABEH LOM and hold, continue climb-in-hold to 3200.</p>
<p>▼ VDP NA when using Ponca City altimeter setting. When local altimeter setting not received, use Ponca City altimeter setting and increase S-ILS 17 DA to 1280 feet; increase all MDAs 80 feet and S-LOC 17 visibility Cats C/D ½ SM, and increase Circling Cat C visibility ½ SM and Cat D visibility ½ SM. For inop ALS when using Ponca City altimeter setting, increase S-ILS 17 all Cats visibility to ¾ SM.</p>		

ASOS 135.725	KANSAS CITY CENTER 127.8 319.1	STILLWATER TOWER ★ 125.35 (CTAF) 0	GND CON 121.6	UNICOM 122.95
------------------------	--	--	-------------------------	-------------------------



CATEGORY	A	B	C	D
S-ILS 17		1200-½	200 (200-½)	
S-LOC 17	1460-½	460 (500-½)	1460-¾	460 (500-¾)
CIRCLING	1460-1 460 (500-1)	1480-1 480 (500-1)	1540-1½ 540 (600-1½)	1740-2¼ 740 (800-2¼)

SC-1, 11 JUL 2024 to 08 AUG 2024

SC-1, 11 JUL 2024 to 08 AUG 2024

REIL Rwy 35 0				
MIRL Rwy 4-22 and 17-35 0				
FAF to MAP 3.8 NM				
Knots	60	90	120	150 180
Min:Sec	3:48	2:32	1:54	1:31 1:16