

WAAS CH <b>50311</b> <b>W05A</b>	APP CRS <b>050°</b>	Rwy Idg TDZE Apt Elev	<b>3999</b> <b>1906</b> <b>1915</b>
--	------------------------	-----------------------------	---

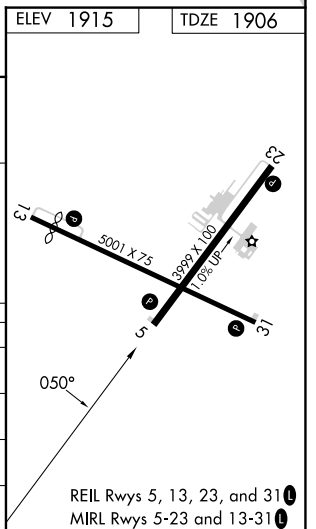
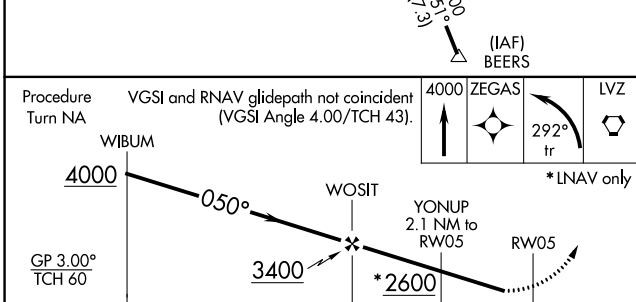
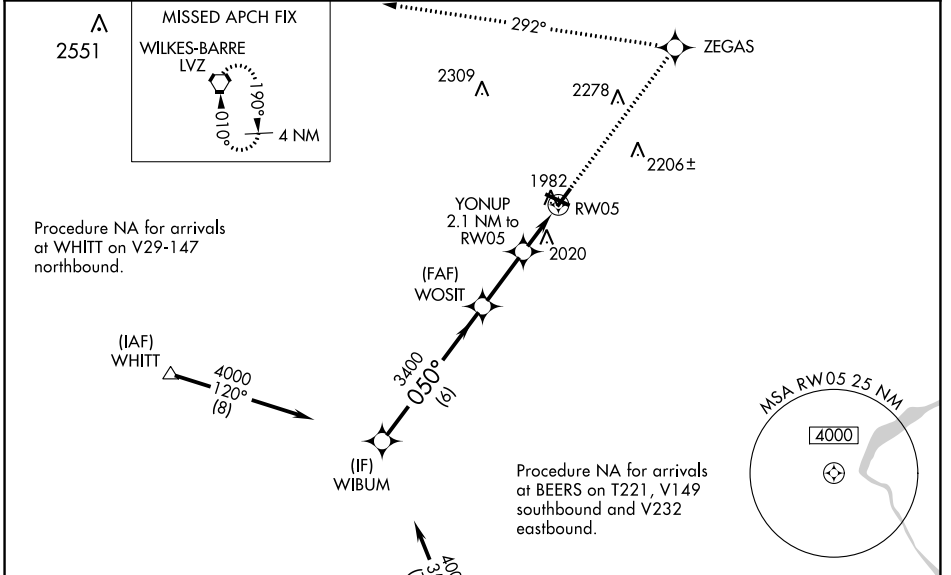
# RNAV (GPS) RWY 5

POCONO MOUNTAINS RGNL (MPO)

**⚠** Baro-VNAV NA when using Wilkes-Barre/Scranton altimeter setting. For uncompassated Baro-VNAV systems, LNAV/VNAV NA below -18°C (0°F) or above 45°C (113°F).  
**⚠** DME/DME RNP-0.3 NA. Rwy 5 helicopter visibility reduction below 3/4 SM NA. When local altimeter setting not received, use Wilkes-Barre/Scranton altimeter setting: increase LPV DA to 2339 feet, LNAV/VNAV DA to 2431 feet and all visibilities 1/4 SM; increase all MDAs 180 feet and visibility Cat C and D 1/2 SM. Circling Rwy 23 NA at night.

**MISSED APPROACH:**  
 Climb to 4000 direct ZEGAS and left turn via 292° track to LVZ VORTAC and hold.

ASOS <b>120.275</b>	WILKES-BARRE APP CON <b>126.3 256.7</b>	CLNC DEL <b>125.3</b>	UNICOM <b>122.7 (CTAF)</b> <b>📶</b>
------------------------	--	--------------------------	--



CATEGORY	A	B	C	D
LPV DA	2160-1		254 (300-1)	
LNAV/VNAV DA	2252-1 1/4		346 (400-1 1/4)	
LNAV MDA	2320-1	414 (500-1)	2320-1 1/4	414 (500-1 1/4)
<b>📶</b> CIRCLING	2480-1 565 (600-1)	2500-1 585 (600-1)	2600-2 685 (700-2)	2660-2 1/2 745 (800-2 1/2)