

VOR/DME OBK <b>113.0</b> Chan 77	APP CRS <b>269°</b>	Rwy Idg TDZE Apt Elev	<b>3800</b> <b>887</b> <b>887</b>
--	------------------------	-----------------------------	---

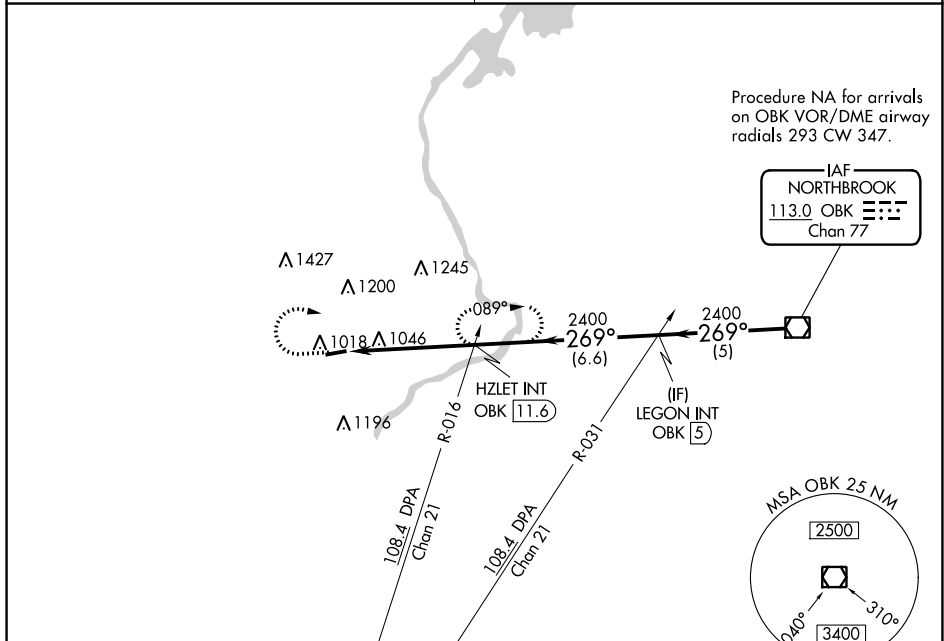
# VOR RWY 26

LAKE IN THE HILLS (3CK)

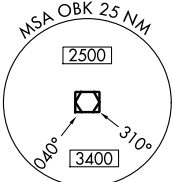
**⚠** Rwy 26 helicopter visibility reduction below 1 SM NA. Obtain local altimeter setting on CTAF; when not received, use Chicago DuPage altimeter setting.

**⚠** NA MISSED APPROACH: Climb to 1900, then climbing right turn to 2500 on heading 130° and OBK VOR/DME R-269 to HZLET INT/OBK 11.6 DME and hold.

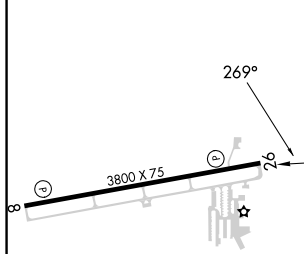
CHICAGO APP CON <b>120.55 306.925</b>	UNICOM <b>123.05 (CTAF) 0</b>
--	----------------------------------



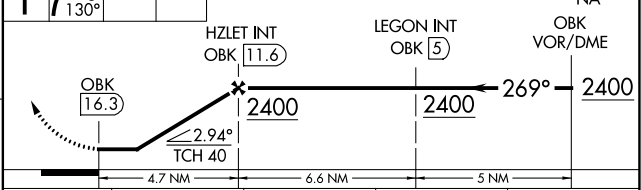
Procedure NA for arrivals on OBK VOR/DME airway radials 293 CW 347.



ELEV 887	TDZE 887
----------	----------



**⚠** 1900 2500 VGSi and descent angles not coincident (VGSi Angle 3.00/TCH 20). Procedure Turn NA



CATEGORY	A	B	C	D
S-26	1380-1	493 (500-1)	1380-1 <sup>3</sup> / <sub>8</sub> 493 (500-1 <sup>3</sup> / <sub>8</sub> )	NA
CIRCLING	1380-1	493 (500-1)	1620-2 733 (800-2)	NA

LIRL Rwy 8-26 0

FAF to MAP 4.7 NM

Knots	60	90	120	150	180
Min:Sec	4:42	3:08	2:21	1:53	1:34

CHICAGO DUPAGE ALTIMETER SETTING

S-26	1440-1	553 (600-1)	1440-1 <sup>5</sup> / <sub>8</sub> 553 (600-1 <sup>5</sup> / <sub>8</sub> )	NA
CIRCLING	1440-1	553 (600-1)	1680-2 <sup>1</sup> / <sub>4</sub> 793 (800-2 <sup>1</sup> / <sub>4</sub> )	NA

EC-3, 11 JUL 2024 to 08 AUG 2024

EC-3, 11 JUL 2024 to 08 AUG 2024