

RNAV (GPS) RWY 32

CRYSTAL (MIC)

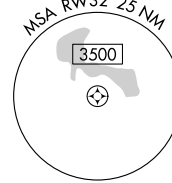
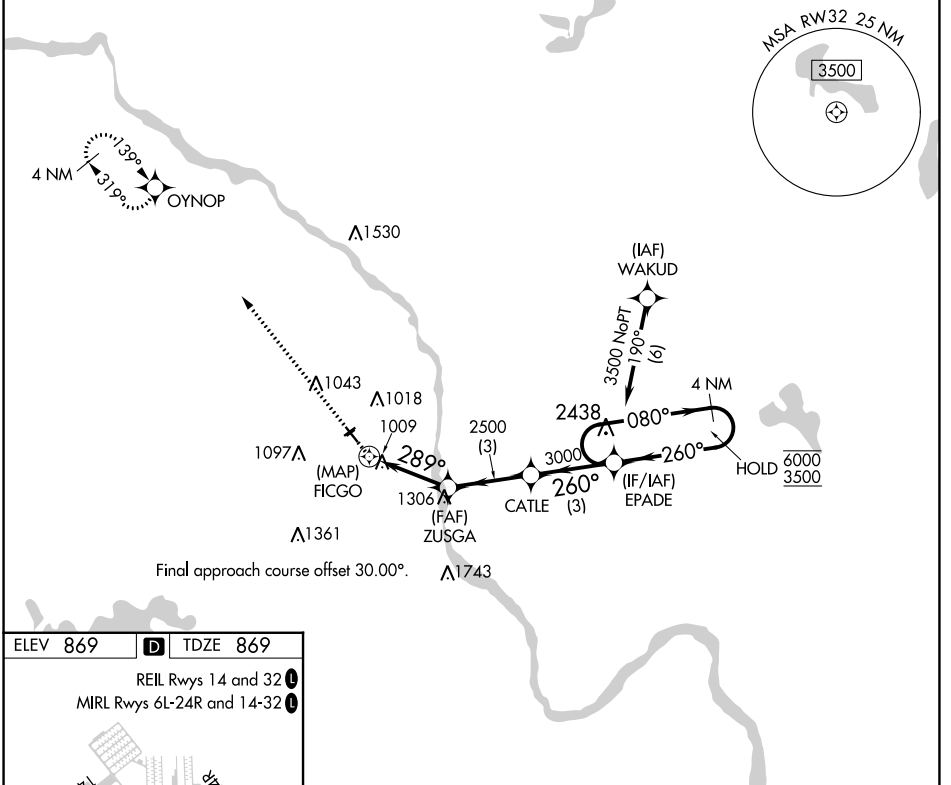
APP CRS	Rwy Idg	3509
289°	TDZE	869
	Apt Elev	869

RNP APCH.

▼ Circling NA to Rwys 6R and 24L.
▲ Rwy 32 helicopter visibility reduction below 3/4 SM NA.

MISSED APPROACH: Climb to 3000 direct OYNOP and hold.

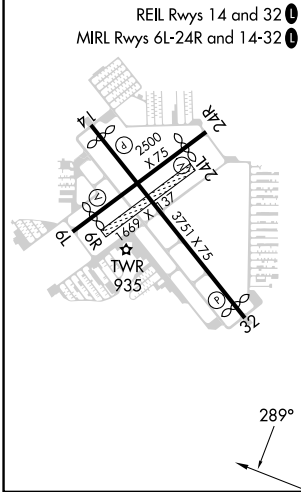
ATIS	MINNEAPOLIS APP CON	CRYSTAL TOWER ★	GND CON	CLNC DEL	CLNC DEL	UNICOM
124.475	126.5 335.65	120.7 (CTAF) 0	121.6	121.6	121.6 (When twr closed)	122.95



NC-1, 11 JUL 2024 to 08 AUG 2024

NC-1, 11 JUL 2024 to 08 AUG 2024

ELEV 869	D TDZE 869
----------	-------------------



3000	OYNOP	EPADE	4 NM Holding Pattern	
↑	✧			
	ZUSGA	CATLE	EPADE	
	≤ 4.00° TCH 35	260°	080° → 6000	
	289°	3000	← 260° 3500	
0.8	3 NM	3 NM	3 NM	
CATEGORY	A	B	C	D
LNAV MDA	1380-1	511 (600-1)		NA
C CIRCLING	1380-1	511 (600-1)		NA