

LOC I-ASG 110.9	APP CRS 183°	Rwy Idg TDZE Apt Elev	4939 1351 1353
---------------------------	------------------------	-----------------------------	---

AL-5165 (FAA)

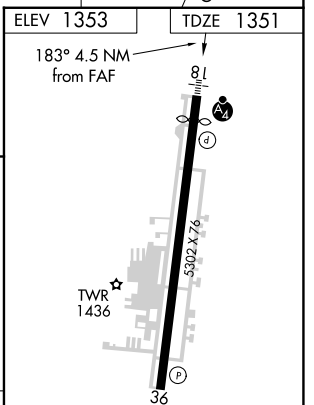
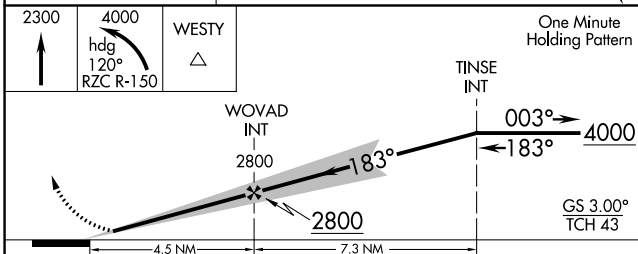
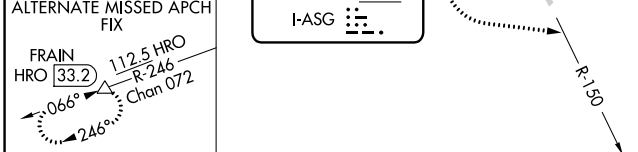
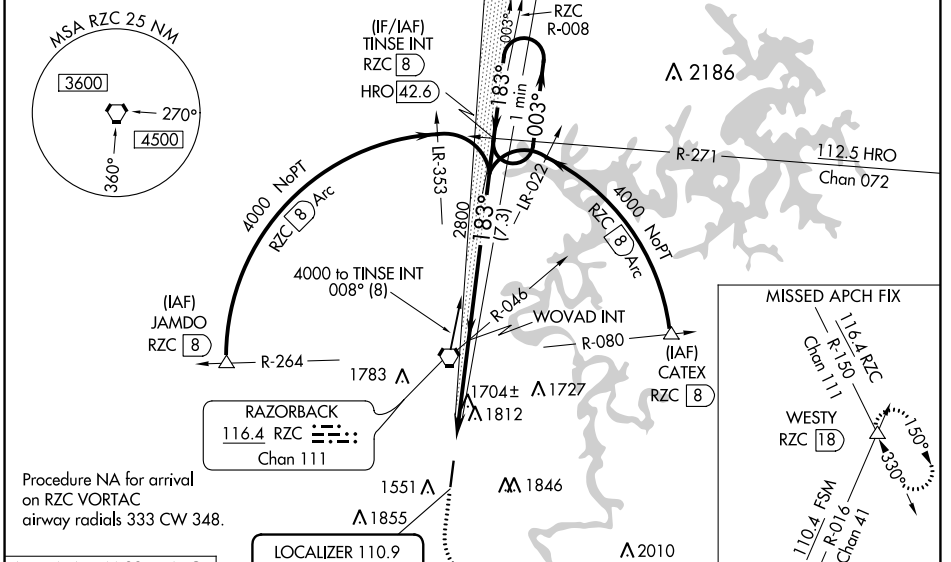
ILS or LOC RWY 18

SPRINGDALE MUNI (ASG)

MAJSAF
 Circling NA east of Rwy 18-36. Rwy 18 helicopter visibility reduction below 3/4 SM NA. Autopilot coupled approach NA below 1900. For inop ALS, increase S-ILS 18 visibility to 3/8 SM.

MISSED APPROACH: Climb to 2300 then climbing left turn to 4000 on heading 120° and RZC VORTAC R-150 to WESTY INT/RZC 18 DME and hold.

AWOS-3 124.675	RAZORBACK APP CON* 126.6 305.2	SPRINGDALE TOWER* 118.2 (CTAF)	GND CON 121.6	REIL 18, 36 122.8	UNICOM 122.95
--------------------------	--	---	-------------------------	-----------------------------	-------------------------



CATEGORY	A	B	C	D	REIL Rwy 18, 36	HIRL Rwy 18-36
S-ILS 18		1605-3/4	254 (300-3/4)			
S-LOC 18	1960-3/4	609 (700-3/4)	1960-1 1/2	609 (700-1 1/2)	FAF to MAP 4.5 NM	
CIRCLING	1960-1 607 (700-1)	2000-1 647 (700-1)	2020-1 1/4 667 (700-1 1/4)	2220-2 3/4 867 (900-2 3/4)	Knots: 60, 90, 120, 150, 180	Min:Sec: 4:30, 3:00, 2:15, 1:48, 1:30

SC-1, 11 JUL 2024 to 08 AUG 2024

SC-1, 11 JUL 2024 to 08 AUG 2024