

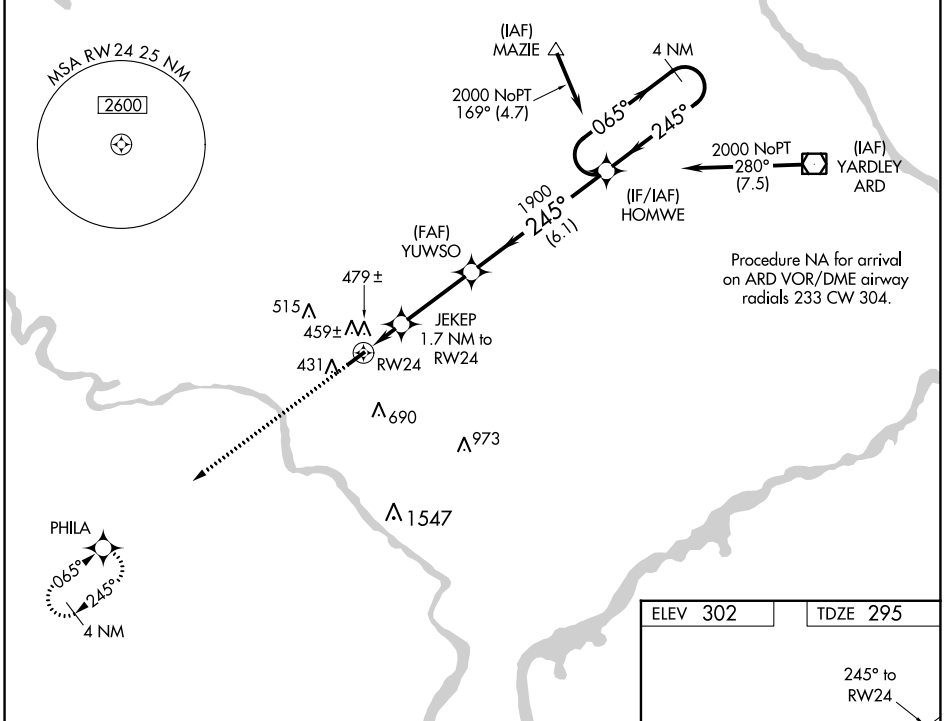
WAAS CH 90419 W24A	APP CRS 245°	Rwy Idg TDZE Apt Elev	3700 295 302
--	------------------------	-----------------------------	---

RNAV (GPS) RWY 24

WINGS FLD (LOM)

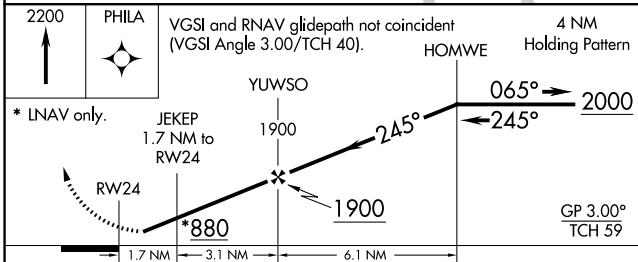
RNP APCH
 ▼ Baro-VNAV NA when using Pottstown altimeter setting. For uncompensated Baro-VNAV systems, LNAV/VNAV NA below -15°C (5°F) or above 54°C (130°F). When local altimeter setting not received, use Pottstown altimeter setting and increase all DA 35 feet and all MDA 40 feet. Rwy 24 helicopter visibility reduction below 3/4 SM NA.
 ▲ MISSED APPROACH: Climb to 2200 direct PHILA and hold.

AWOS-3 118.925	PHILADELPHIA APP CON 126.85 263.125	CLNC DEL 118.55	UNICOM 123.0 (CTAF) 0
--------------------------	---	---------------------------	---------------------------------

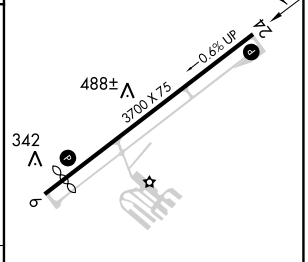


NE-4, 11 JUL 2024 to 08 AUG 2024

NE-4, 11 JUL 2024 to 08 AUG 2024



ELEV 302	TDZE 295
----------	----------



CATEGORY	A	B	C	D
LPV DA	567-1	272 (300-1)		NA
LNAV/VNAV DA	775-1 3/4	480 (500-1 3/4)		NA
LNAV MDA	740-1	445 (500-1)		NA
CIRCLING	780-1	478 (500-1)		NA

REIL Rwy 6 and 24 0
 MIRL Rwy 6-24 0