

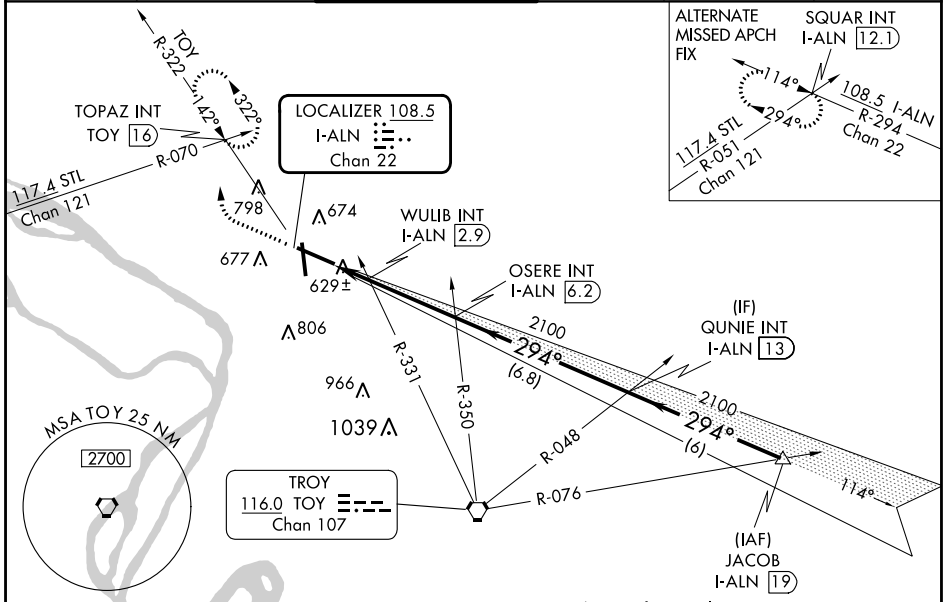
LOC/DME I-ALN <b>108.5</b> Chan 22	APP CRS <b>294°</b>	Rwy Idg TDZE Apt Elev	<b>8099</b> <b>531</b> <b>544</b>
--	------------------------	-----------------------------	---

# ILS or LOC RWY 29

ST LOUIS RGNL (ALN)

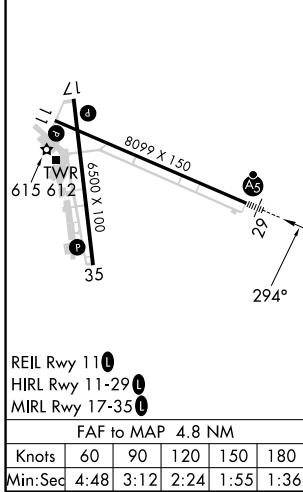
<p>For inop ALS, increase WULIB fix minimums S-LOC 29 Cats C/D visibility to 1 SM.</p>	<p>MALS R</p>	<p>MISSED APPROACH: Climb to 1000 then climbing right turn to 2200 on heading 310° and on TOY VORTAC R-322 to TOPAZ INT/TOY 16 DME and hold.</p>			
			<p>ATIS <b>128.0</b></p>	<p>ST LOUIS APP CON <b>124.2 353.9</b></p>	<p>REGIONAL TOWER* <b>126.0 (CTAF) 0 239.0</b></p>

ATIS <b>128.0</b>	ST LOUIS APP CON <b>124.2 353.9</b>	REGIONAL TOWER* <b>126.0 (CTAF) 0 239.0</b>	GND CON <b>120.2</b>	CLNC DEL <b>120.2</b> (when tower closed)	UNICOM <b>122.95</b>
-------------------	-------------------------------------	---	----------------------	--	----------------------



ELEV 544	<b>D</b>	TDZE 531
----------	----------	----------

Procedure NA for arrivals at JACOB on V12 northeast bound.



	1000	2200	TOY R-322	TOPAZ INT	*LOC only.			
			hdg 310°		OSERE INT I-ALN 6.2	QUNIE INT I-ALN 13	JACOB I-ALN 19	
					WULIB INT I-ALN 2.9	2100	2100	2100
						2100	2100	GS 3.00° TCH 55
					1.4 NM	3.3 NM	6.8 NM	6 NM
CATEGORY					A	B	C	D
S-ILS 29					731-1/2 200 (200-1/2)			
S-LOC 29					980-1/2 449 (500-1/2)	980-7/8 449 (500-7/8)		
CIRCLING					1000-1 456 (500-1)	1160-1 3/4 616 (700-1 3/4)	1200-2 656 (700-2)	
WULIB FIX MINIMUMS (DUAL VOR RECEIVERS OR DME REQUIRED)								
S-LOC 29					880-1/2 349 (400-1/2)	880-5/8 349 (400-5/8)		
CIRCLING					1000-1 456 (500-1)	1160-1 3/4 616 (700-1 3/4)	1200-2 656 (700-2)	

EC-3, 11 JUL 2024 to 08 AUG 2024

EC-3, 11 JUL 2024 to 08 AUG 2024