

(LINDY8.STL) 24025

# LINDBERGH EIGHT DEPARTURE

AL-5178 (FAA)

ST LOUIS RGNL (ALN)  
ALTON/ST. LOUIS, ILLINOIS

ATIS  
128.0  
CLNC DEL  
120.2 (when twr closed)  
GND CON  
120.2  
REGIONAL TOWER \*  
126.0 239.0  
ST LOUIS DEP CON  
124.2 353.9

**TOP ALTITUDE:**  
**2500**

ST. LOUIS  
117.4 STL  
Chan 121

VICHY  
117.7 VIH  
Chan 124

FARMINGTON  
115.7 FAM  
Chan 104

LITTLE ROCK  
113.9 LIT  
Chan 86

WALNUT RIDGE  
114.5 ARG  
Chan 92

EC-3, 11 JUL 2024 to 08 AUG 2024

EC-3, 11 JUL 2024 to 08 AUG 2024

### TAKEOFF MINIMUMS

Rwys 11, 17, 29, 35: Standard.

NOTE: DME and RADAR required.

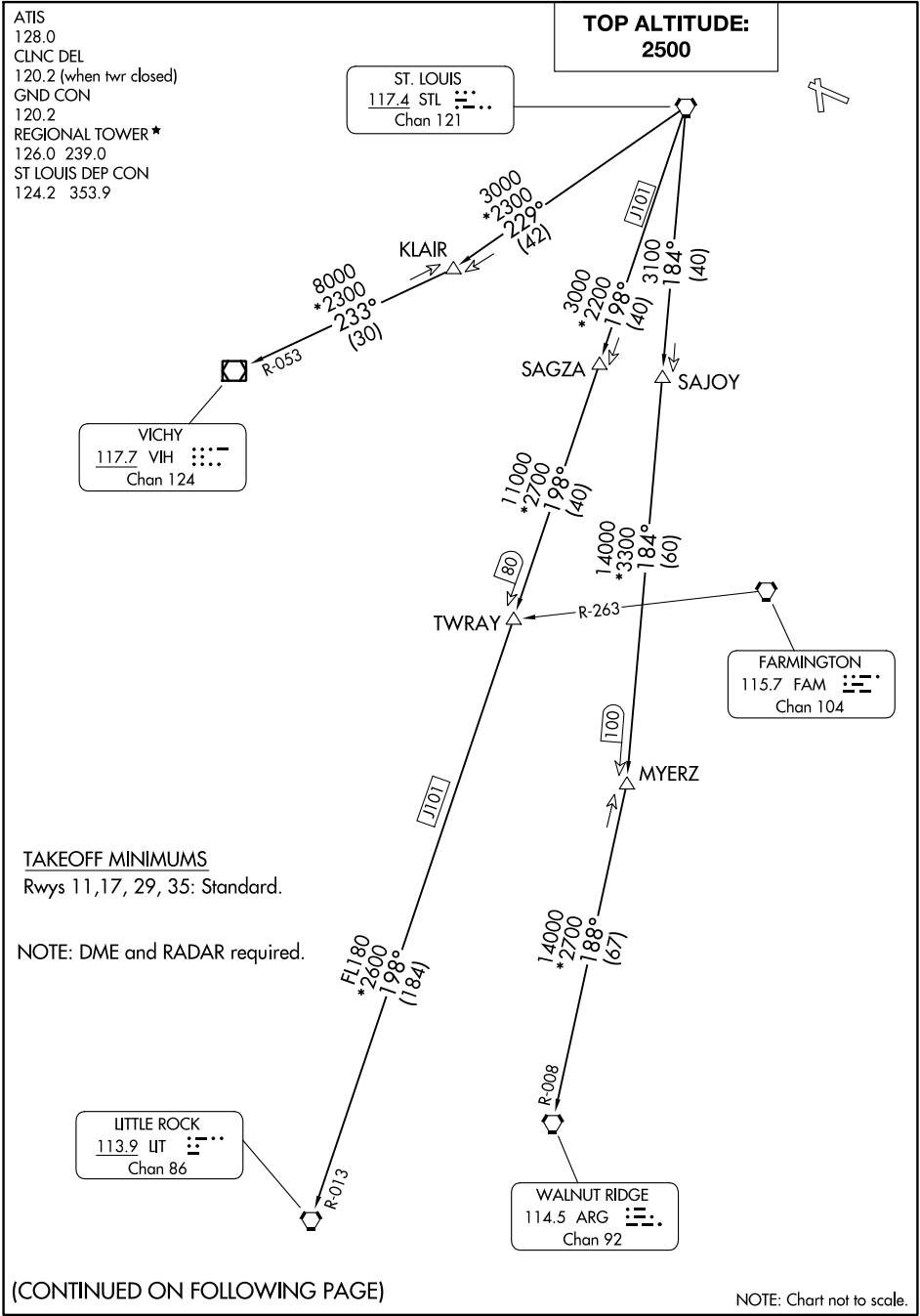
(CONTINUED ON FOLLOWING PAGE)

NOTE: Chart not to scale.

# LINDBERGH EIGHT DEPARTURE

(LINDY8.STL) 17JUN21

ALTON/ST. LOUIS, ILLINOIS  
ST LOUIS RGNL (ALN)





DEPARTURE ROUTE DESCRIPTION

Climb on assigned heading for vector to appropriate route, maintain 2500 or assigned altitude, thence . . . .

. . . . (transition). Expect filed altitude 10 minutes after departure.

LITTLE ROCK TRANSITION (LINDY8.LIT): From over STL VORTAC on STL R-198 to TWRAY, then on STL R-198 and LIT R-013 to LIT VORTAC.

MYERZ TRANSITION (LINDY8.MYERZ): From over STL VORTAC on STL R-184 to MYERZ.

VICHY TRANSITION (LINDY8.VIH): From over STL VORTAC on STL R-229 to KLAIR, then on VIH R-053 to VIH VOR/DME.

WALNUT RIDGE TRANSITION (LINDY8.ARG): From over STL VORTAC on STL R-184 to MYERZ, then on ARG R-008 to ARG VORTAC.

EC-3, 11 JUL 2024 to 08 AUG 2024

EC-3, 11 JUL 2024 to 08 AUG 2024