

# PLESS FIVE DEPARTURE

AL-5178 (FAA)

ST LOUIS RGNL (ALN)  
ALTON/ST. LOUIS, ILLINOIS

EC-3, 11 JUL 2024 to 08 AUG 2024

ATIS  
128.0  
CINC DEL  
120.2 (when tower closed)  
GND CON  
120.2

REGIONAL TOWER\*  
126.0 239.0  
ST LOUIS DEP CON  
124.2 353.9

**TAKEOFF MINIMUMS**  
Rwys 11, 17, 29, 35: Standard.

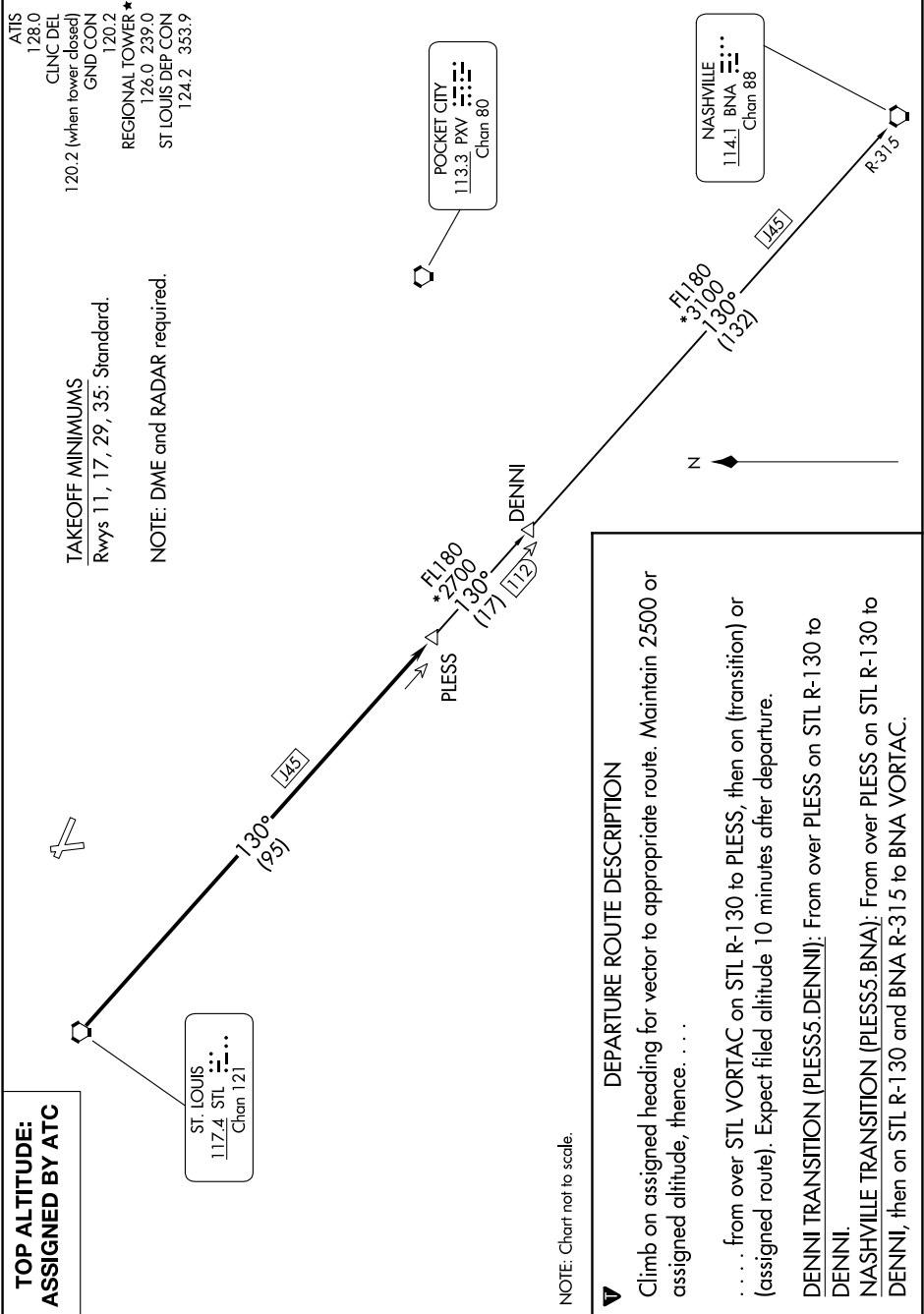
NOTE: DME and RADAR required.

**TOP ALTITUDE:  
ASSIGNED BY ATC**

ST. LOUIS  
117.4 STL  
Chan 121

POCKET CITY  
113.3 PXV  
Chan 80

NASHVILLE  
114.1 BNA  
Chan 88



**DEPARTURE ROUTE DESCRIPTION**

Climb on assigned heading for vector to appropriate route. Maintain 2500 or assigned altitude, thence. . . .

. . . . from over STL VORTAC on STL R-130 to PLESS, then on (transition) or (assigned route). Expect filed altitude 10 minutes after departure.

**DENNII TRANSITION (PLESS5.DENNII):** From over PLESS on STL R-130 to DENNII.

**NASHVILLE TRANSITION (PLESS5.BNA):** From over PLESS on STL R-130 to DENNII, then on STL R-130 and BNA R-315 to BNA VORTAC.

NOTE: Chart not to scale.

# PLESS FIVE DEPARTURE

EC-3, 11 JUL 2024 to 08 AUG 2024