

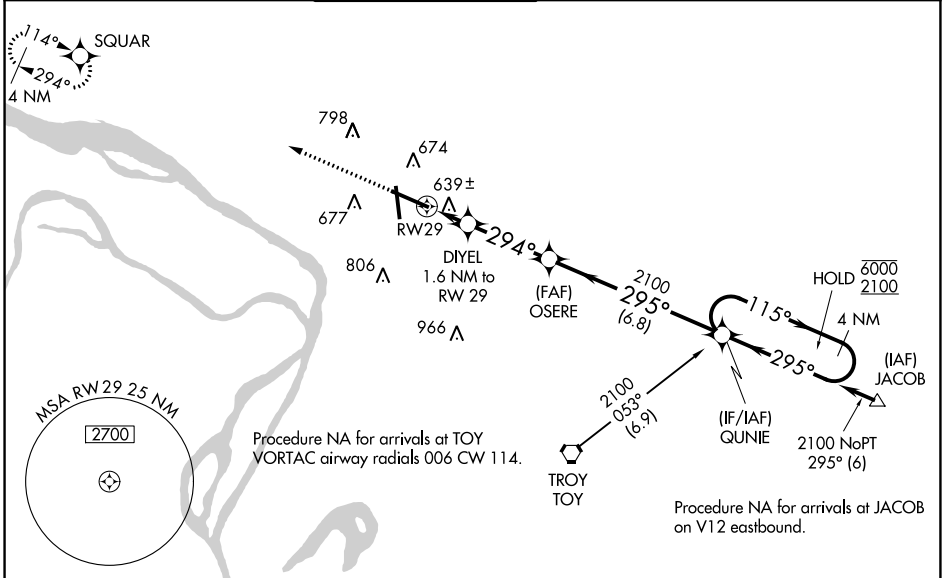
WAAS CH 77507 W29A	APP CRS 294°	Rwy Idg TDZE Apt Elev	8099 531 544
--	------------------------	-----------------------------	---

RNAV (GPS) RWY 29

ST LOUIS RGNL (ALN)

RNP APCH.	MALSR	MISSED APPROACH: Climb to 2400 direct SQUAR and hold.
<p>For uncompensated Baro-VNAV systems, LNAV/VNAV NA below -16°C or above 54°C. For inop ALS, increase LNAV/VNAV all Cats visibility to 3/8 SM and LNAV Cat C/D visibility to 1 SM.</p>		

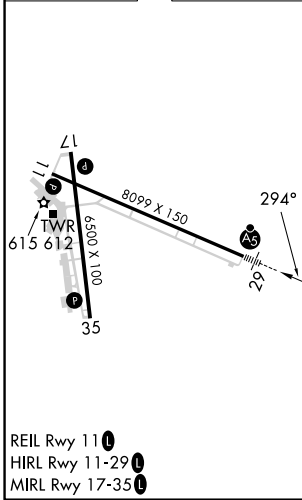
ATIS 128.0	ST LOUIS APP CON 124.2 353.9	REGIONAL TOWER* 126.0 (CTAF) 0 239.0	GND CON 120.2	CLNC DEL 120.2 (when tower closed)	UNICOM 122.95
----------------------	--	--	-------------------------	---	-------------------------



EC-3, 11 JUL 2024 to 08 AUG 2024

EC-3, 11 JUL 2024 to 08 AUG 2024

ELEV 544	D	TDZE 531
----------	----------	----------



<p>2400 SQUAR</p> <p>DIYEL OSERE QUNIE 4 NM Holding Pattern</p> <p>*LNAV only.</p> <p>*1 NM to RW29</p> <p>1.6 NM to RW29</p> <p>2100</p> <p>294°</p> <p>295°</p> <p>115°</p> <p>6000</p> <p>2100</p> <p>GP 3.00°</p> <p>TCH 55</p> <p>1 NM 0.6 NM 3.2 NM 6.8 NM</p>				
CATEGORY	A	B	C	D
LPV DA		731-1/2	200 (200-1/2)	
LNAV/VNAV DA		825-1/2	294 (300-1/2)	
LNAV MDA	900-1/2	369 (400-1/2)	900-3/4	369 (400-3/4)
CIRCLING	1000-1	456 (500-1)	1160-1 3/4	1200-2
			616 (700-1 3/4)	656 (700-2)