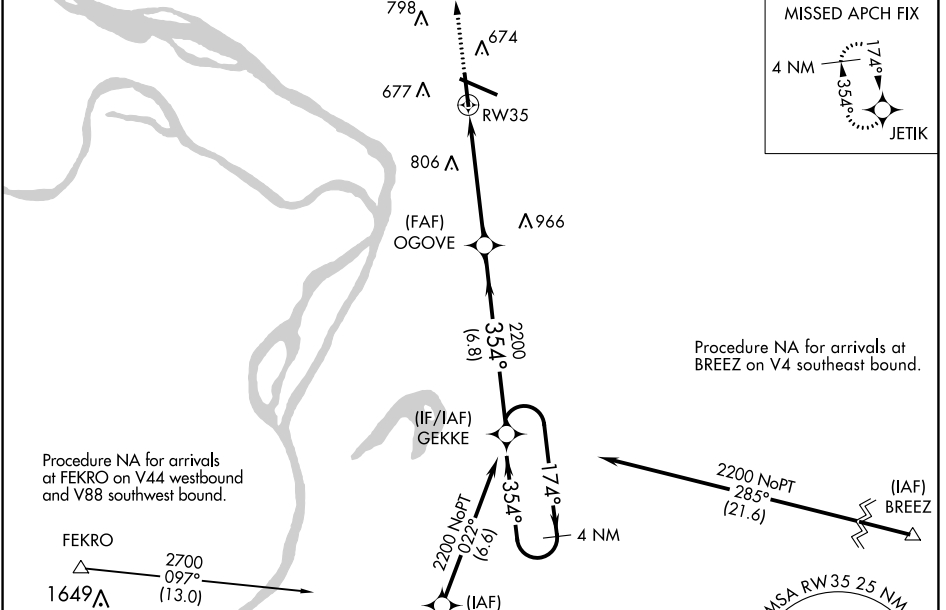


APP CRS	Rwy Idg	<b>6500</b>
<b>354°</b>	TDZE	<b>544</b>
	Apt Elev	<b>544</b>

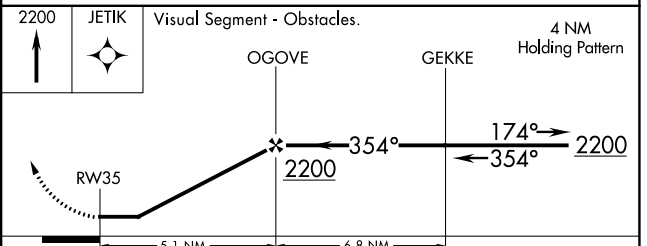
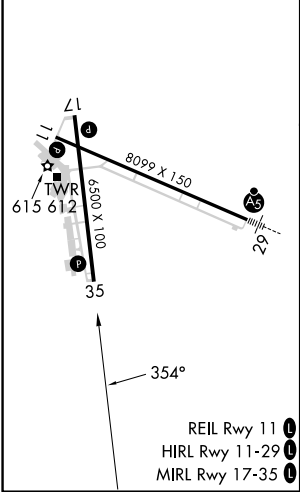
# RNAV (GPS) RWY 35

ST LOUIS RGNL (ALN)

RNP APCH.			MISSED APPROACH: Climb to 2200 direct JETIK and hold.		
<p><b>▼</b> Visibility reduction by helicopters NA. When local altimeter setting not received, use St Louis Lambert Intl altimeter setting and increase all MDA 60 feet, increase LNAV Cat C/ D visibility 1/8 SM and Circling Cat C/D visibility 1/4 SM. When VGSi inop, straight-in/ Circling Rwy 35 procedure and Circling Rwy 17 NA at night.</p>					
ATIS	ST LOUIS APP CON	REGIONAL TOWER*	GND CON	CLNC DEL	UNICOM
<b>128.0</b>	<b>124.2 353.9</b>	<b>126.0</b> (CTAF) <b>0 239.0</b>	<b>120.2</b>	<b>120.2</b> (when tower closed)	<b>122.95</b>



ELEV	<b>544</b>	<b>D</b>	TDZE	<b>544</b>
------	------------	----------	------	------------



CATEGORY	A	B	C	D
LNAV MDA	1020-1	476 (500-1)	1020-1 <sup>3</sup> / <sub>8</sub>	476 (500-1 <sup>3</sup> / <sub>8</sub> )
CIRCLING	1020-1	476 (500-1)	1160-1 <sup>3</sup> / <sub>4</sub>	1200-2
			616 (700-1 <sup>3</sup> / <sub>4</sub> )	656 (600-2)

EC-3, 11 JUL 2024 to 08 AUG 2024

EC-3, 11 JUL 2024 to 08 AUG 2024