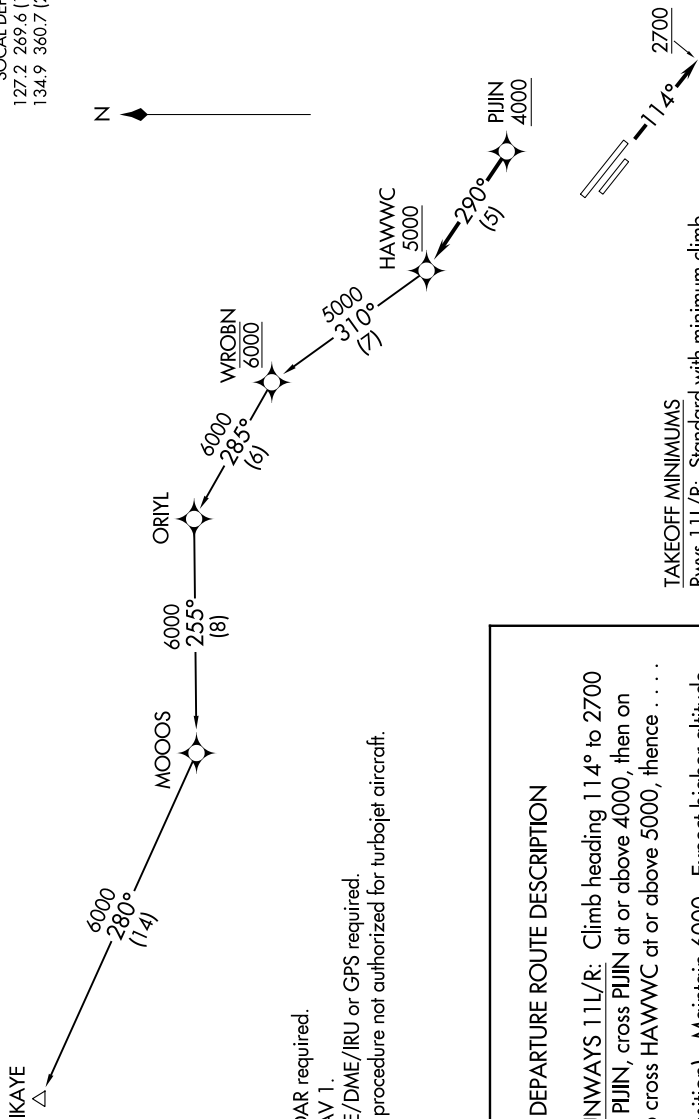
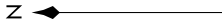


SW-3, 11 JUL 2024 to 08 AUG 2024

TOP ALTITUDE:
6000

GND CON
120.9
TORRANCE TOWER ★
133.075 257.8 (NORTH)
124.0 257.8 (SOUTH)
SOCAL DEP CON
127.2 269.6 (11L/R)
134.9 360.7 (29L/R)



NOTE: RADAR required.
NOTE: RNAV 1.
NOTE: DME/DME/IRU or GPS required.
NOTE: This procedure not authorized for turbojet aircraft.

DEPARTURE ROUTE DESCRIPTION

TAKEOFF RUNWAYS 11L/R: Climb heading 114° to 2700 for vectors to PIJIN, cross PIJIN at or above 4000, then on track 290° to cross HAWWC at or above 5000, thence on (transition). Maintain 6000. Expect higher altitude 10 minutes after departure.

IKAYE TRANSITION (HAWWC3.IKAYE)

TAKEOFF MINIMUMS
Rwys 11L/R: Standard with minimum climb of 325 feet per NM to 1600.
Rwys 29L/R: NA-ATC.

NOTE: Chart not to scale.

SW-3, 11 JUL 2024 to 08 AUG 2024