


LOC/DME I-TOA <b>111.9</b> Chan <b>56</b>	APP CRS <b>294°</b>	Rwy Ldg TDZE <b>97</b> Apt Elev <b>103</b>
---	------------------------	--

# ILS or LOC RWY 29R

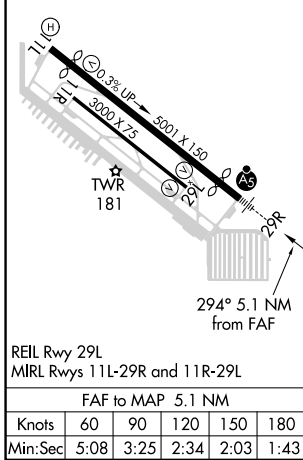
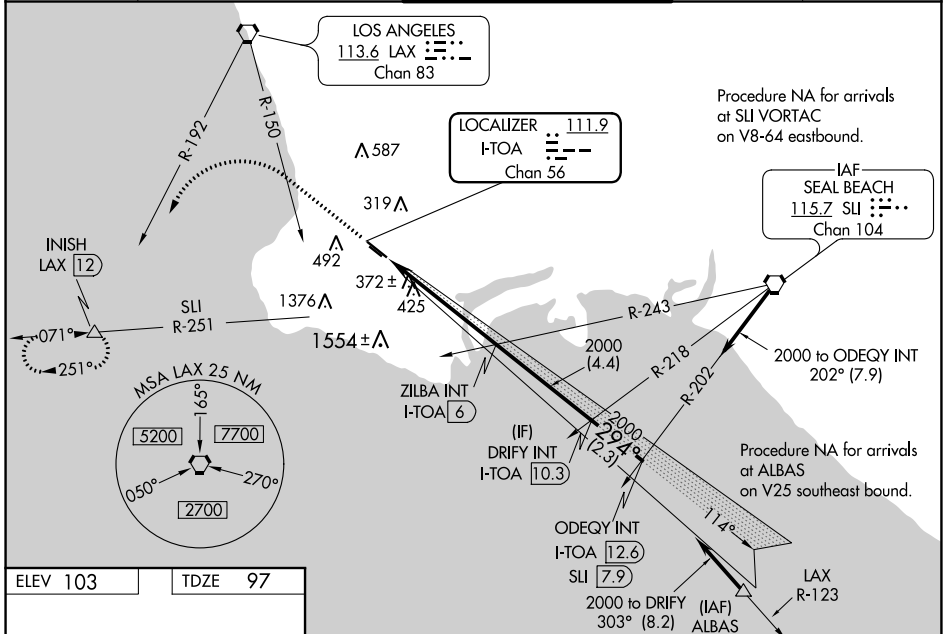
ZAMPERINI FLD (TOA)

**⚠** Circling NA SW of Rwy 11R-29L. When local altimeter setting not received, except for operators with approved weather reporting service, use Los Angeles Intl altimeter setting and increase all DA to 405 feet and increase all MDA 40 feet; increase S-LOC 29R and Circling Cat C visibility 1/8 SM. For inop ALS, increase S-ILS 29R all Cats visibility to 1/8 SM. For inop ALS when using Los Angeles Intl altimeter setting increase S-ILS 29R all Cats visibility to 1/8 SM. VDP NA when using Los Angeles altimeter setting.

**MALSR**  


**MISSED APPROACH:** Climb to 3000 on heading 294° to cross LAX VORTAC R-150 then climbing left turn on heading 250° and on LAX VORTAC R-192 to INISH INT/ LAX 12 DME and hold.

ATIS <b>125.6</b>	SOCAL APP CON <b>124.3 363.2</b> (Rwys 11L, 11R) <b>127.2 269.6</b> (Rwys 29L, 29R)	<b>TORRANCE TOWER*</b> <b>133.075 257.8</b> (NORTH) <b>124.0</b> (CTAF) <b>0 257.8</b> (SOUTH)	GND CON <b>120.9</b>	UNICOM <b>122.95</b>
----------------------	---	--	-------------------------	-------------------------



3000	LAX R-150	hdg 294°	LAX R-192	INISH △	VGSI and ILS glidepaths not coincident (VGSI Angle 4.00/TCH 11).
*LOC only.					
ZILBA INT I-TOA 6		DRIFY INT I-TOA 10.3			
I-TOA 0.8 *I-TOA 2.1		2000		2000	
1.3		3.9 NM		4.4 NM	
CATEGORY	A	B	C	D	
S-ILS 29R	381-1/2		284 (300-1/2)		NA
S-LOC 29R	640-1/2	543 (600-1/2)		640-1 1/8 543 (600-1 1/8) NA	
<input checked="" type="checkbox"/> CIRCLING	640-1 537 (600-1)	680-1 577 (600-1)		680-1 1/8 577 (600-1 1/8) NA	

SW-3, 11 JUL 2024 to 08 AUG 2024

SW-3, 11 JUL 2024 to 08 AUG 2024