

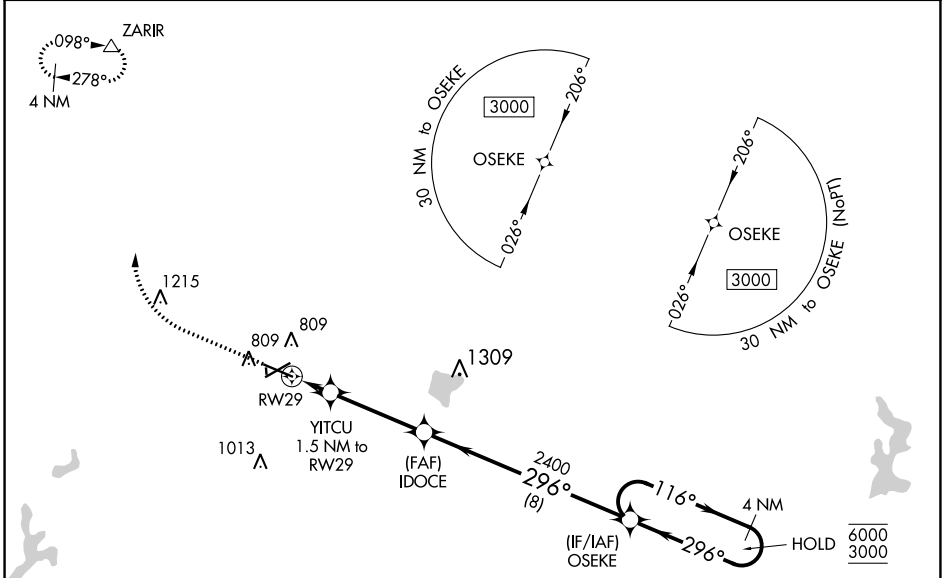
WAAS CH 93510 W29A	APP CRS 296°	Rwy Idg TDZE Apt Elev	6501 718 722
--	------------------------	-----------------------------	---

RNAV (GPS) RWY 29

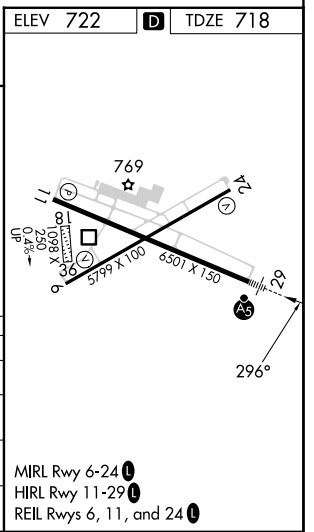
COLES COUNTY MEML (MTO)

RNP APCH.	MALSR	MISSED APPROACH: Climb to 2000 then climbing right turn to 3000 direct ZARIR and hold.
<p>⚠ Circling NA to Rwy 18 and 36. For uncompensated Baro-VNAV systems, LNAV/VNAV NA below -19°C or above 54°C. For inop ALS, increase LNAV/VNAV all Cats visibility to 7/8 SM and increase LNAV Cat C/D visibility to 1 SM.</p>		

ASOS 118.475	CHAMPAIGN APP CON ★ 132.85 290.225	UNICOM 122.7 (CTAF) ①
------------------------	--	---------------------------------



ELEV 722	TDZE 718							
<table border="1"> <tr> <td>2000</td> <td>3000</td> <td>ZARIR</td> </tr> <tr> <td>↑</td> <td>↷</td> <td>△</td> </tr> </table>	2000	3000	ZARIR	↑	↷	△	OSEKE	4 NM Holding Pattern
2000	3000	ZARIR						
↑	↷	△						
* LNAV only.	YITCU 1.5 NM to RW29	IDOCE 2400	OSEKE					
RW29	* 1 NM to RW29	2400	116° → 6000 / 3000					
1 NM	0.5	3.6 NM	← 296°					
		8 NM	GP 3.00° TCH 51					
CATEGORY	A	B	C					
LPV DA		918-1/2	200 (200-1/2)					
LNAV/VNAV DA		1014-1/2	296 (300-1/2)					
LNAV MDA	1080-1/2	362 (400-1/2)	1080-5/8 362 (400-5/8)					
C CIRCLING	1160-1 438 (500-1)	1180-1 458 (500-1)	1240-1 1/2 518 (600-1/2) 1380-2 658 (700-2)					



EC-3, 11 JUL 2024 to 08 AUG 2024

EC-3, 11 JUL 2024 to 08 AUG 2024