

WAAS CH 56537 W06A	APP CRS 063°	Rwy Idg TDZE 722 Apt Elev 722	5799
--	------------------------	---	-------------

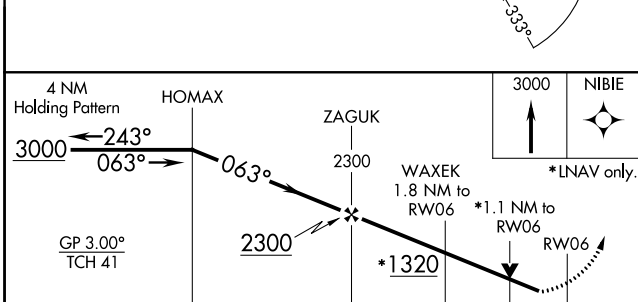
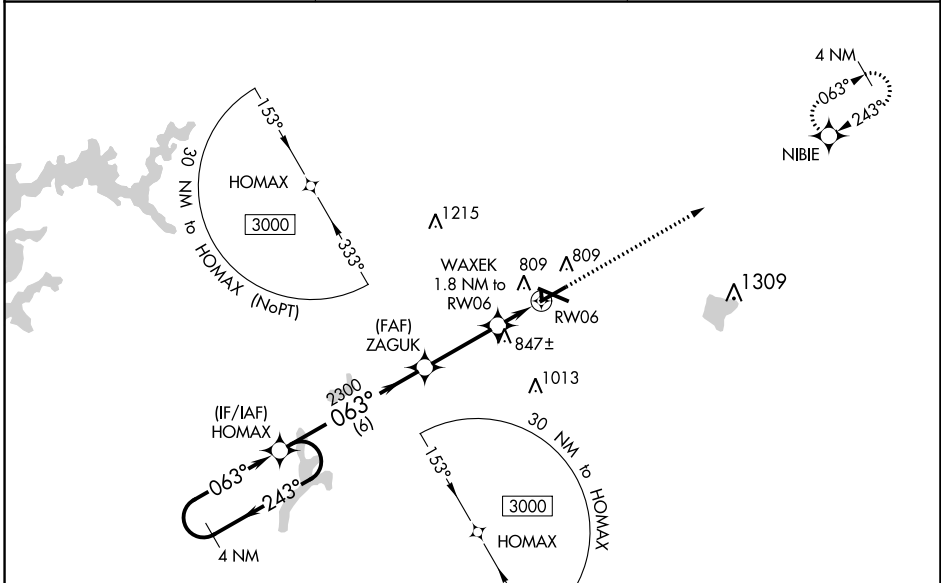
RNAV (GPS) RWY 6

COLES COUNTY MEML (MTO)

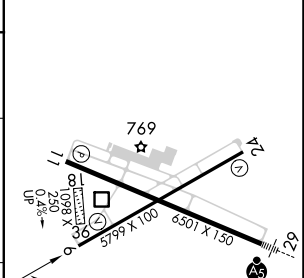
⚠ DME/DME RNP-0.3 NA. When local altimeter setting not received, use Champaign/Urbana altimeter setting and increase all DA 82 feet, increase MDA 100 feet, increase LPV, LNAV/VNAV all Cats, LNAV Cats C/D and Circling Cat D visibility ¼ mile. Baro-VNAV and VDP NA when using Champaign/Urbana altimeter setting. Rwy 6 helicopter visibility reduction below ¼ SM NA. For uncompensated Baro-VNAV systems, LNAV/VNAV NA below -19°C (-2°F) or above 54°C (130°F). Circling NA to Rws 18 and 36.

MISSED APPROACH:
Climb to 3000 direct NIBIE and hold.

ASOS 118.475	CHAMPAIGN APP CON ★ 132.85 290.225	UNICOM 122.7 (CTAF) 0
------------------------	--	---------------------------------



ELEV 722	D TDZE 722
----------	-------------------



CATEGORY	A	B	C	D
LPV DA		972-7/8	250 (300-7/8)	
LNAV/VNAV DA		1124-13/8	402 (500-13/8)	
LNAV MDA	1100-1	378 (400-1)	1100-1 1/8	378 (400-1 1/8)
C CIRCLING	1160-1 438 (500-1)	1180-1 458 (500-1)	1240-1 1/2 518 (600-1 1/2)	1380-2 658 (700-2)

MIRL Rwy 6-24 **0**
HIRL Rwy 11-29 **0**
REIL Rws 6, 11, and 24 **0**

EC-3, 11 JUL 2024 to 08 AUG 2024

EC-3, 11 JUL 2024 to 08 AUG 2024