

VOR/DME VIO	APP CRS	Rwy Idg	8501
115.95	175°	TDZE	788
Chan 106 (Y)		Apt Elev	794

VOR RWY 17

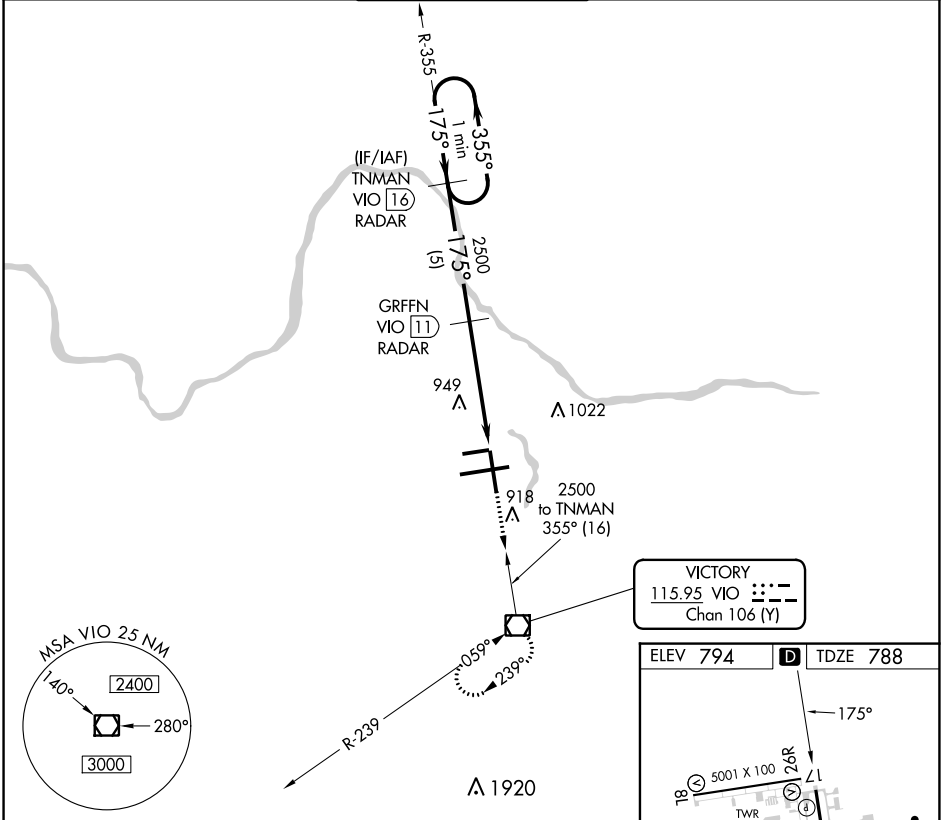
GERALD R FORD INTL (G.R.)

DME or RADAR required.

⚠ When local altimeter setting not received, use Holland altimeter setting and increase all MDAs 80 feet and increase S-17 Cat D visibility ¼ SM. Rwy 17 helicopter visibility reduction below ¼ SM NA.

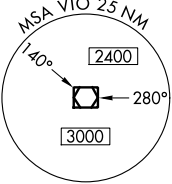
MISSED APPROACH: Climb to 3000 direct VIO VOR/DME and hold.

ATIS 118.725	GREAT LAKES APP CON * 128.4 257.6	GRAND RAPIDS TOWER * 135.65 (CTAF) 0 339.8	GND CON 121.8	CLNC DEL 119.3	UNICOM 122.95
------------------------	---------------------------------------------	------------------------------------------------------	-------------------------	--------------------------	-------------------------

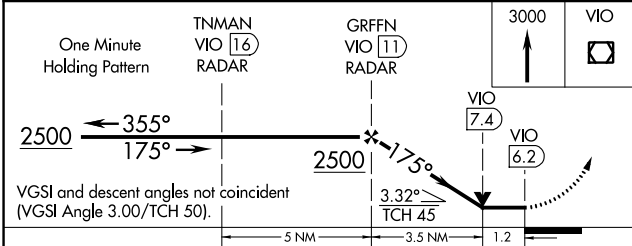
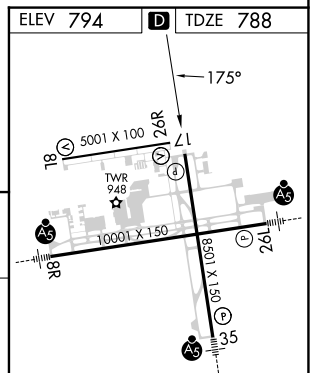


EC-1, 11 JUL 2024 to 08 AUG 2024

EC-1, 11 JUL 2024 to 08 AUG 2024



VICTORY
115.95 VIO ---
Chan 106 (Y)



MIRL Rwy 8L-26R
REIL Rwy 8L, 26R and 17
HIRL Rwy 8R-26L and 17-35

CATEGORY	A	B	C	D
S-17	1200-1	412 (500-1)	1200-1¼	412 (500-1¼)
Ⓢ CIRCLING	1280-1	486 (500-1)	1340-1½	1360-2 566 (600-2)

FAF to MAP 4.7 NM					
Knots	60	90	120	150	180
Min:Sec	4:42	3:08	2:21	1:53	1:34