

LAUREL, MISSISSIPPI

AL-5185 (FAA)

22195

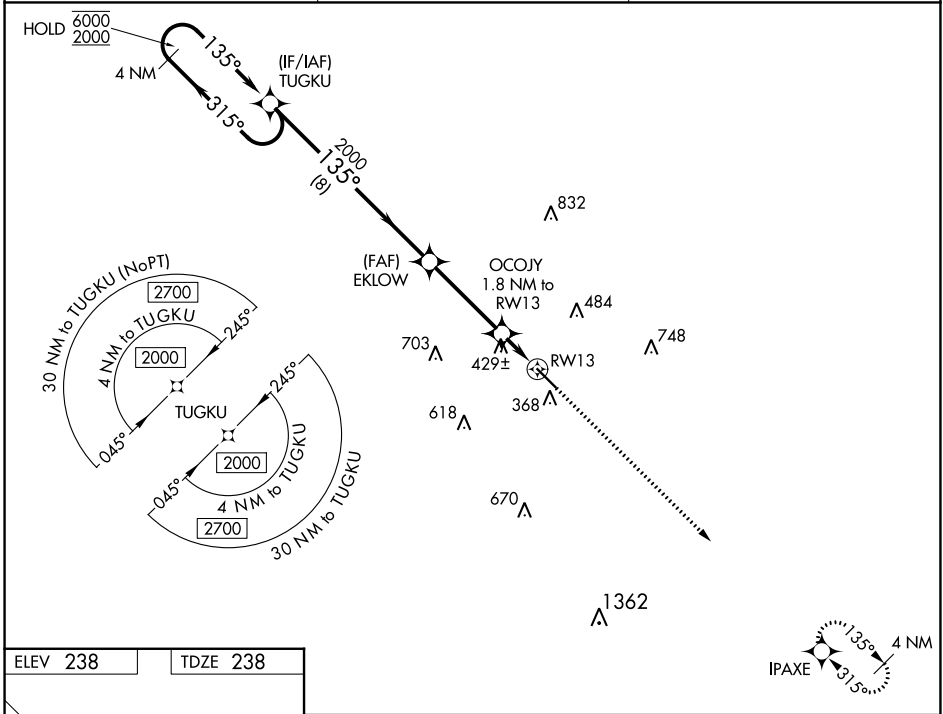
WAAS CH 45704 W13A	APP CRS 135°	Rwy Idg 5513 TDZE 238 Apt Elev 238
---------------------------------	------------------------	---

RNAV (GPS) RWY 13

HESLER-NOBLE FLD (LUL)

RNP APCH.	MISSED APPROACH: Climb to 2000 direct IPAXE and hold.
▼ For uncompensated Baro-VNAV systems, LNAV/VNAV NA below -15°C or above 54°C.	

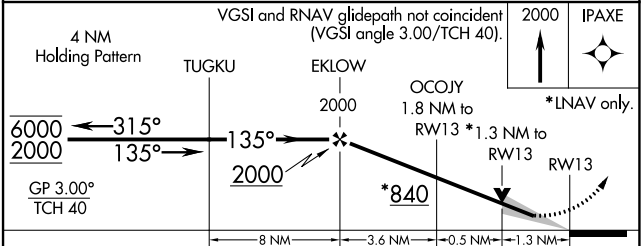
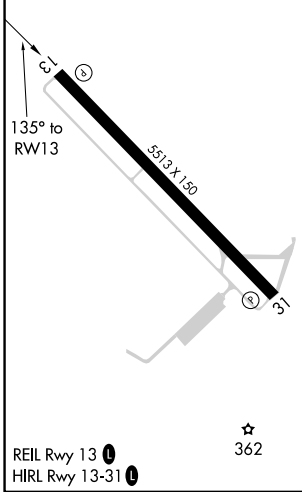
AWOS-3PT 119.275	HOUSTON CENTER 126.8 327.8	UNICOM 123.05 (CTAF) 0
----------------------------	--------------------------------------	----------------------------------



SC-4, 11 JUL 2024 to 08 AUG 2024

SC-4, 11 JUL 2024 to 08 AUG 2024

ELEV 238	TDZE 238
----------	----------



CATEGORY	A	B	C	D
LPV DA	488-1		250 (300-1)	
LNAV/VNAV DA	759-1¾		521 (600-1¾)	
LNAV MDA	680-1	442 (500-1)	680-1¾ 442 (500-1¾)	680-2 442 (500-2)
CIRCLING	700-1 462 (500-1)	800-1 562 (600-1)	1040-2¼ 802 (900-2¼)	1060-2¾ 822 (900-2¾)

LAUREL, MISSISSIPPI
Amdt 1C 08OCT20

31°40'N-89°10'W

RNAV (GPS) RWY 13