

LAUREL, MISSISSIPPI

AL-5185 (FAA)

22195

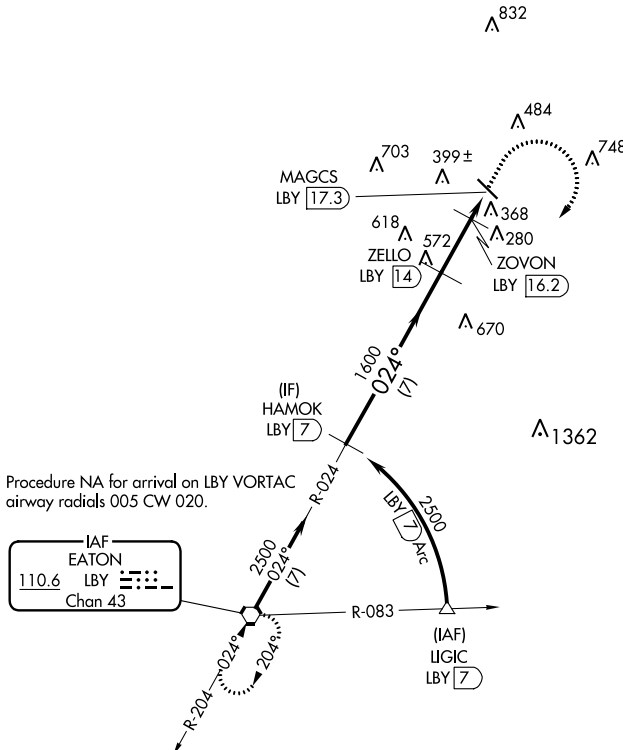
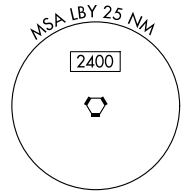
VORTAC LBY 110.6 Chan 43	APP CRS 024°	Rwy Idg TDZE Apt Elev	N/A N/A 238
--	------------------------	-----------------------------	--

VOR-A

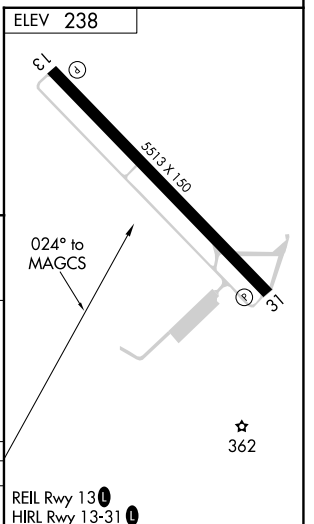
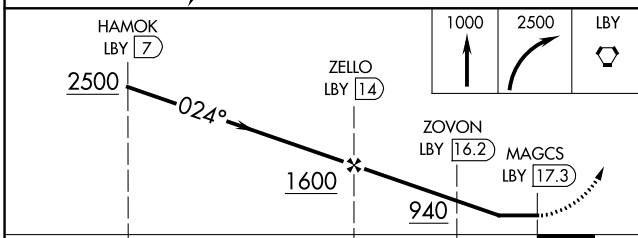
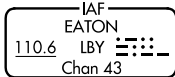
HESLER-NOBLE FID (LUL)

DME required.	MISSED APPROACH: Climb to 1000, then climbing right turn to 2500 direct LBY VORTAC and hold.
---------------	--

AWOS-3PT 119.275	HOUSTON CENTER 126.8 327.8	UNICOM 123.05 (CTAF)
----------------------------	--------------------------------------	--------------------------------



Procedure NA for arrival on LBY VORTAC airway radials 005 CW 020.



CATEGORY	A	B	C	D
CIRCLING	700-1 462 (500-1)	800-1 562 (600-1)	1040-2 ³ / ₄ 802 (900-2 ¹ / ₄)	1060-2 ³ / ₄ 822 (900-2 ³ / ₄)

REIL Rwy 13-31
HIRL Rwy 13-31

LAUREL, MISSISSIPPI

Amdt 6 23APR20

31°40'N-89°10'W

HESLER-NOBLE FLD (LUL)

VOR-A

SC-4, 11 JUL 2024 to 08 AUG 2024

SC-4, 11 JUL 2024 to 08 AUG 2024