

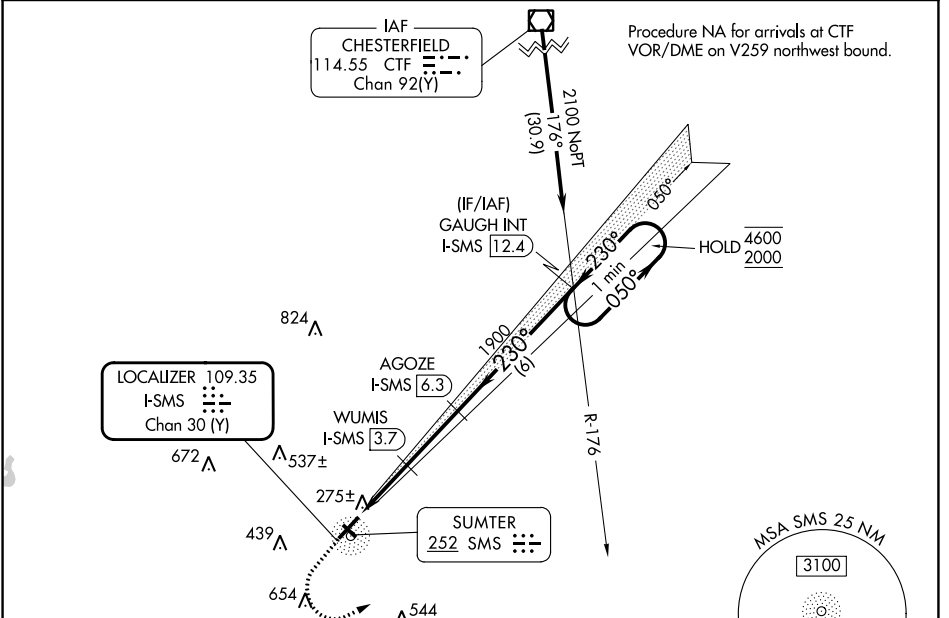
LOC/DME I-SMS 109.35 Chan 30 (Y)	APP CRS 230°	Rwy Idg TDZE Apt Elev	5501 182 182
--	------------------------	-----------------------------	---

ILS or LOC RWY 23

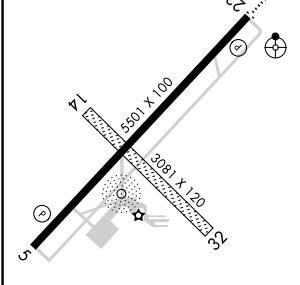
SUMTER (SMS)

DME required.	ODALS	MISSED APPROACH: Climb to 600 then climbing left turn to 2000 on heading 050° and CTF VOR/DME R-176 to GAUGH INT/I-SMS 12.4 DME and hold.
<p>⚠ Circling NA to Rwy's 14 and 32. ⚠ Inop table does not apply to S-ILS 23 all Cats.</p>		

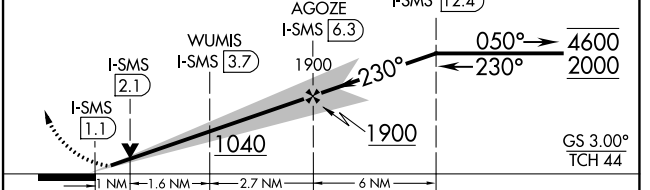
AWOS-3 118.075	SHAW APP CON ★ 125.4	UNICOM 122.7 (CTAF) 📻
--------------------------	--------------------------------	--



ELEV 182	TDZE 182
----------	----------



CTF R-176	GAUGH INT	One Minute Holding Pattern
-----------	-----------	----------------------------



CATEGORY	A	B	C	D
S-ILS 23		382- ³ / ₄	200 (200- ³ / ₄)	
S-LOC 23	540- ³ / ₄	358 (400- ³ / ₄)	540- ⁷ / ₈	358 (400- ⁷ / ₈)
📻 CIRCLING	600-1 418 (500-1)	680-1 498 (500-1)	960-2 ¹ / ₄ 778 (800-2 ¹ / ₄)	960-2 ¹ / ₂ 778 (800-2 ¹ / ₂)

SE-2, 11 JUL 2024 to 08 AUG 2024

SE-2, 11 JUL 2024 to 08 AUG 2024