

WAAS CH 61215 W05A	APP CRS 050°	Rwy Idg TDZE 181 Apt Elev 182	5501
--	------------------------	---	-------------

RNAV (GPS) RWY 5

SUMTER (SMS)

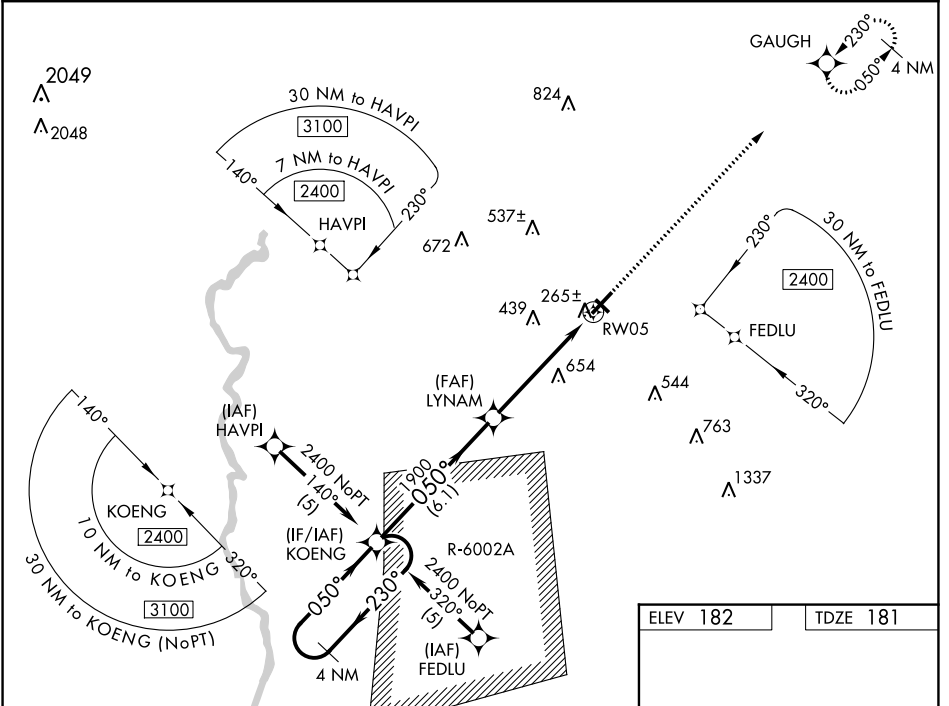
⚠ For uncompensated Baro-VNAV systems, LNAV/VNAV NA below -1.5°C (5°F) or above 48°C (118°F). DME/DME RNP-0.3 NA. Procedure NA when R-6002A is active. Circling NA to Rwy 14-32. When local altimeter setting not received, use Camden altimeter setting and increase all DA 65 feet and all MDA 80 feet and LPV all Cats, LNAV/VNAV all Cats, LNAV Cats C/D, and Circling Cats C/D visibilities ¼ mile. VDP and Baro/VNAV NA when using Camden altimeter setting.

MISSED APPROACH: Climb to 2400 direct GAUGH and hold.

AWOS-3
118.075

SHAW APP CON*
125.4

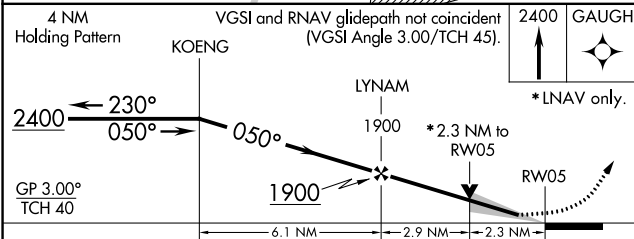
UNICOM
122.7 (CTAF) 0



SE-2, 11 JUL 2024 to 08 AUG 2024

SE-2, 11 JUL 2024 to 08 AUG 2024

ELEV 182	TDZE 181
----------	----------



CATEGORY	A	B	C	D
LPV DA		381-3/4	200 (200-3/4)	
LNAV/VNAV DA		535-1 1/4	354 (400-1 1/4)	
LNAV MDA	940-1 759 (800-1)	940-1 1/4 759 (800-1 1/4)	940-2 1/4 759 (800-2 1/4)	940-2 1/2 759 (800-2 1/2)
C CIRCLING	940-1 758 (800-1)	940-1 1/4 758 (800-1 1/4)	1000-2 1/2 818 (900-2 1/2)	1000-2 3/4 818 (900-2 3/4)

