

| | | |
|---|------------------------|---|
| LOC/DME I-AIK 109.9 Chan 36 | APP CRS 066° | Rwy Idg 5500 TDZE 515 Apt Elev 529 |
|---|------------------------|---|

ILS or LOC/DME RWY 7

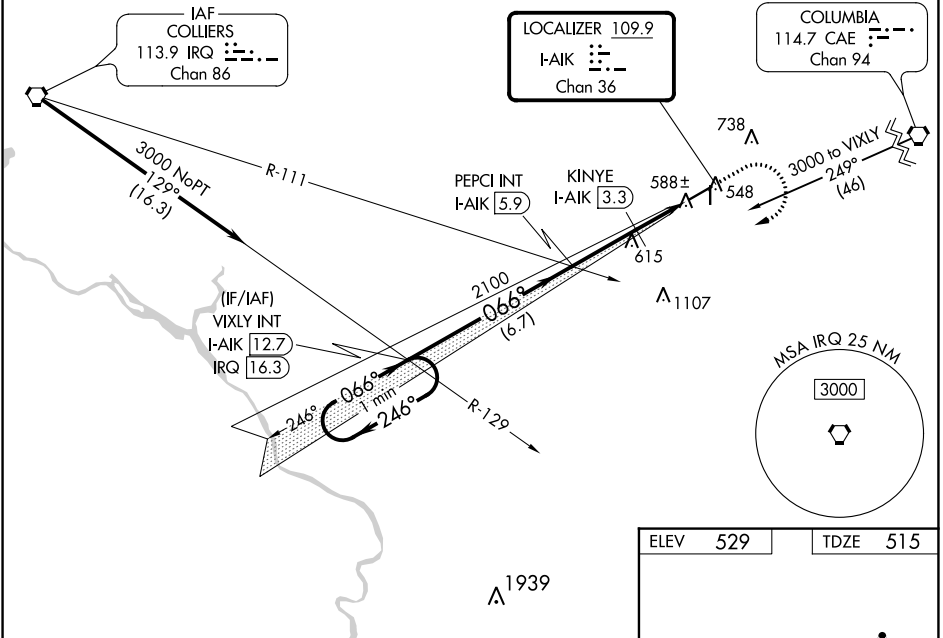
AIKEN RGNL (AIK)

VDP NA with Augusta Rgnl at Bush Fld altimeter setting.
When local altimeter setting not received, use Augusta Rgnl at Bush Fld altimeter setting: increase S-ILS 7 all Cats DAs to 819 feet and all Cats visibility ¼ SM; increase all MDAs 120 feet and S-LOC 7 Cats C/D visibility ½ SM and Circling Cat C visibility ¼ SM.

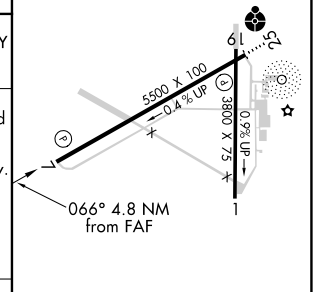
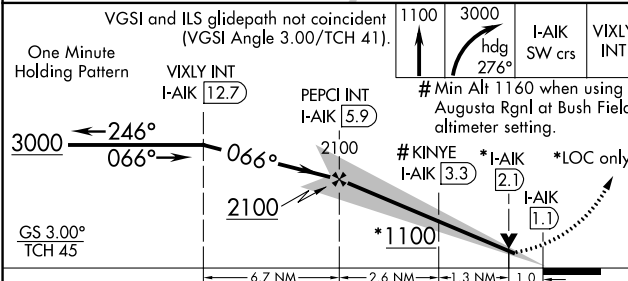
MISSED APPROACH: Climb to 1100 then climbing right turn to 3000 on heading 276° and I-AIK SW course (246°) to VIXLY INT/I-AIK 12.7 DME and hold.

| | | | |
|--------------------------|--|----------------------------|-------------------------------|
| AWOS-3 118.025 | AUGUSTA APP CON * 119.15 284.625 | CLNC DEL 126.075 | UNICOM 122.8 (CTAF) |
|--------------------------|--|----------------------------|-------------------------------|

Procedure NA for arrivals on IRQ VORTAC airway radials 084 CW 174.



| | |
|----------|----------|
| ELEV 529 | TDZE 515 |
|----------|----------|



| CATEGORY | A | B | C | D |
|----------|----------------------|-----------------------|-------------------------|-----------------------|
| S-ILS 7 | | 715-¾ | 200 (200-¾) | |
| S-LOC 7 | | 880-1 | 365 (400-1) | |
| CIRCLING | 980-1 451 (500-1) | 1000-1 471 (500-1) | 1140-1¾ 611 (700-1¾) | 1420-3 891 (900-3) |

| | |
|-------------|--------------|
| REIL Rwy 25 | MRL Rwy 7-25 |
|-------------|--------------|

SE-2, 11 JUL 2024 to 08 AUG 2024

SE-2, 11 JUL 2024 to 08 AUG 2024