

WAAS CH 86534 W34A	APP CRS 343°	Rwy Idg TDZE Apt Elev	4000 739 746
--	------------------------	-----------------------------	---

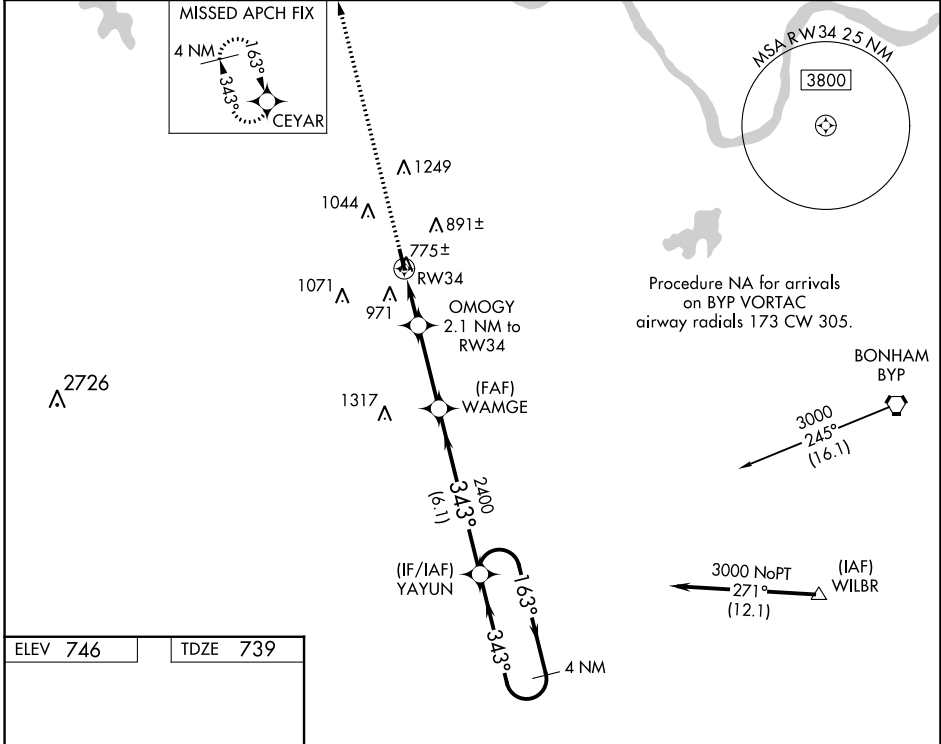
RNAV (GPS) RWY 34

SHERMAN MUNI (SWI)

NA DME/DME RNP-0.3 NA. Use Sherman/Denison altimeter setting, if not received, use Dallas Love Fld altimeter setting and increase all MDA 140 feet; increase LP and LNAV Cat C visibility $\frac{3}{8}$ mile, Circling Cat B visibility $\frac{1}{4}$ mile and Cat C visibility $\frac{1}{2}$ mile. Procedure NA at night. Helicopter visibility reduction below 1 SM NA.

MISSED APPROACH:
Climb to 3000 direct CEYAR and hold.

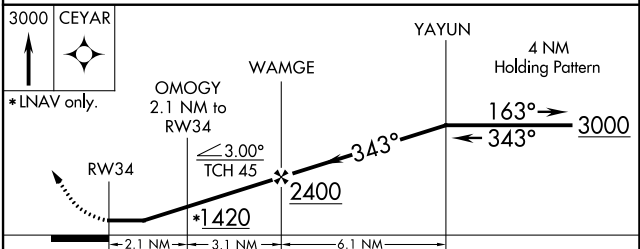
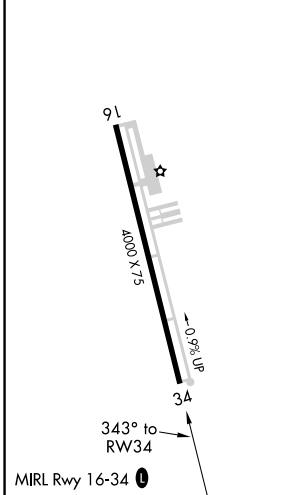
FORT WORTH CENTER 124.75 323.0	UNICOM 122.8 (CTAF) 0
--	---------------------------------



SC-2, 11 JUL 2024 to 08 AUG 2024

SC-2, 11 JUL 2024 to 08 AUG 2024

ELEV 746	TDZE 739
----------	----------



CATEGORY	A	B	C	D
LP MDA	1060-1 321 (400-1)			NA
LNAV MDA	1100-1	361 (400-1)	1100-1 $\frac{1}{8}$ 361 (400-1 $\frac{1}{8}$)	NA
C CIRCLING	1300-1 554 (600-1)	1420-1 674 (700-1)	1620-2 $\frac{1}{2}$ 874 (900-2 $\frac{1}{2}$)	NA